



**23, Greenfields Gardens, Greenfields, Shrewsbury, SY1 2RN**

£900 Per Month





23, Greenfields Gardens, Greenfields, Shrewsbury, SY1 2RN

**£900 Per Month**

VIRTUAL TOUR AVAILABLE - Two bedroom FURNISHED ground floor apartment located in a modern development close to Shrewsbury town centre and easy access to the railway station and the popular neighbourhood of Greenfields. Includes allocated parking space

Available: 17/05/24

## Description

Communal Entrance Hall, Hall with Storage Cupboard, Living Room, Fitted Kitchen including white goods, Master Bedroom including En-Suite Shower Room and wardrobes, Double Bedroom, Family Bathroom. Full Double Glazing, Bike Store, Allocated Parking Space. EPC C



Furnished

Council Tax Band: B

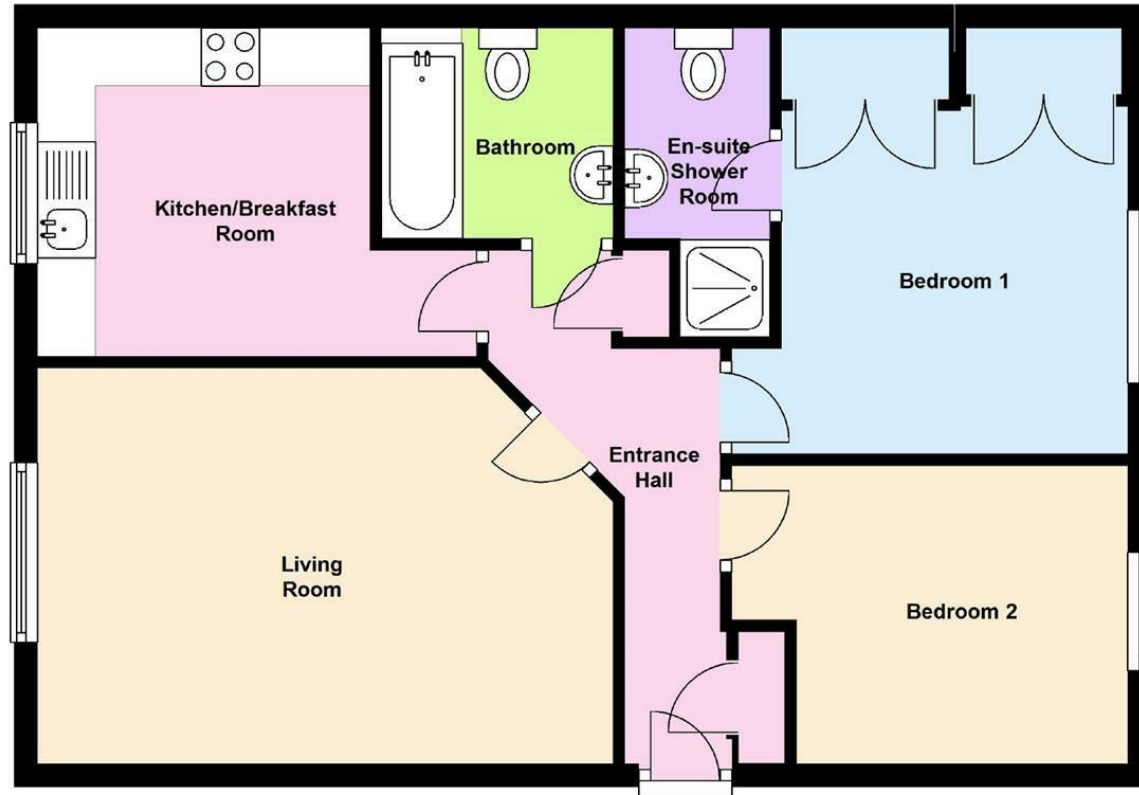
Available: 17th May 2024

EPC: C

## Floor Plans

### Ground Floor

Approx. 59.4 sq. metres (639.5 sq. feet)



Total area: approx. 59.4 sq. metres (639.5 sq. feet)

We accept no responsibility for any mistake or inaccuracy contained within the floorplan. The floorplan is provided as a guide only and should be taken as an illustration only. The measurements, contents and positioning are approximations only and provided as a guidance tool and not an exact replication of the property.

Plan produced using PlanUp.

These particulars, whilst believed to be accurate are set out as a general outline only for guidance and do not constitute any part of an offer or contract. Intending purchasers should not rely on them as statements of representation of fact, but must satisfy themselves by inspection or otherwise as to their accuracy. No person in this firm's employment has the authority to make or give any representation or warranty in respect of the property.