



23a, Dogpole, Shrewsbury, SY1 1ES
£800 Per Month



23a, Dogpole, Shrewsbury, SY1 1ES

£800 Per Month

VIRTUAL TOUR AVAILABLE: Spacious, fully renovated one bedroom second floor apartment accessed via an exclusive private courtyard just off Shrewsbury's historic Wyle Cop.

Available: Immediately

Description

Comprising: Stairs to communal entrance, hallway, new shower room with walk in tray, new kitchen including integrated oven, hob and full sized fridge/freezer, good sized living room, large bedroom. Secondary glazing, new high heat retention heaters. Blinds included. EPC C.

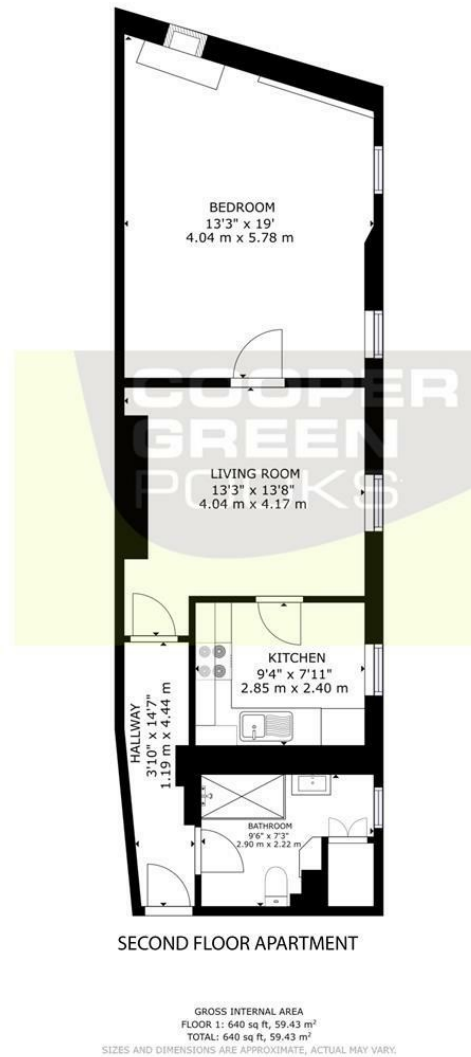
Unfurnished

Council Tax Band: A

Available: 4th May 2024

EPC: C

Floor Plans



These particulars, whilst believed to be accurate are set out as a general outline only for guidance and do not constitute any part of an offer or contract. Intending purchasers should not rely on them as statements of representation of fact, but must satisfy themselves by inspection or otherwise as to their accuracy. No person in this firm's employment has the authority to make or give any representation or warranty in respect of the property.