



56, Davison Drive, Weir Hill Preston Street, Shrewsbury, SY2 5WE
£1,500 Per Month



56, Davison Drive, Weir Hill Preston Street, Shrewsbury, SY2 5WE

£1,500 Per Month

VIRTUAL TOUR AVAILABLE - Recently built four bedroom detached house located in the new Weir Hill development at the top of Preston Street. Close to Prestfelde School and providing convenient access to Shrewsbury Business Park, the town centre and the M54 / A5 ring road. Includes integral garage.

Available: 10/07/2024

Description

Comprising: Entrance hall through to living room with glazed double doors to kitchen dining room, kitchen including integrated oven and gas hob, under counter fridge, freezer and dishwasher, dining area with french doors to rear patio and large under stairs cupboard, utility with space for two appliances, door to side passage and WC. Stairs to upstairs landing with large shelved cupboard, master bedroom with wardrobes and en suite shower room, three further bedrooms and family bathroom with shower over bath. Garage and driveway parking for two cars. Rear garden with patio and side access to front of property. Double glazing. Gas central heating. EPC B



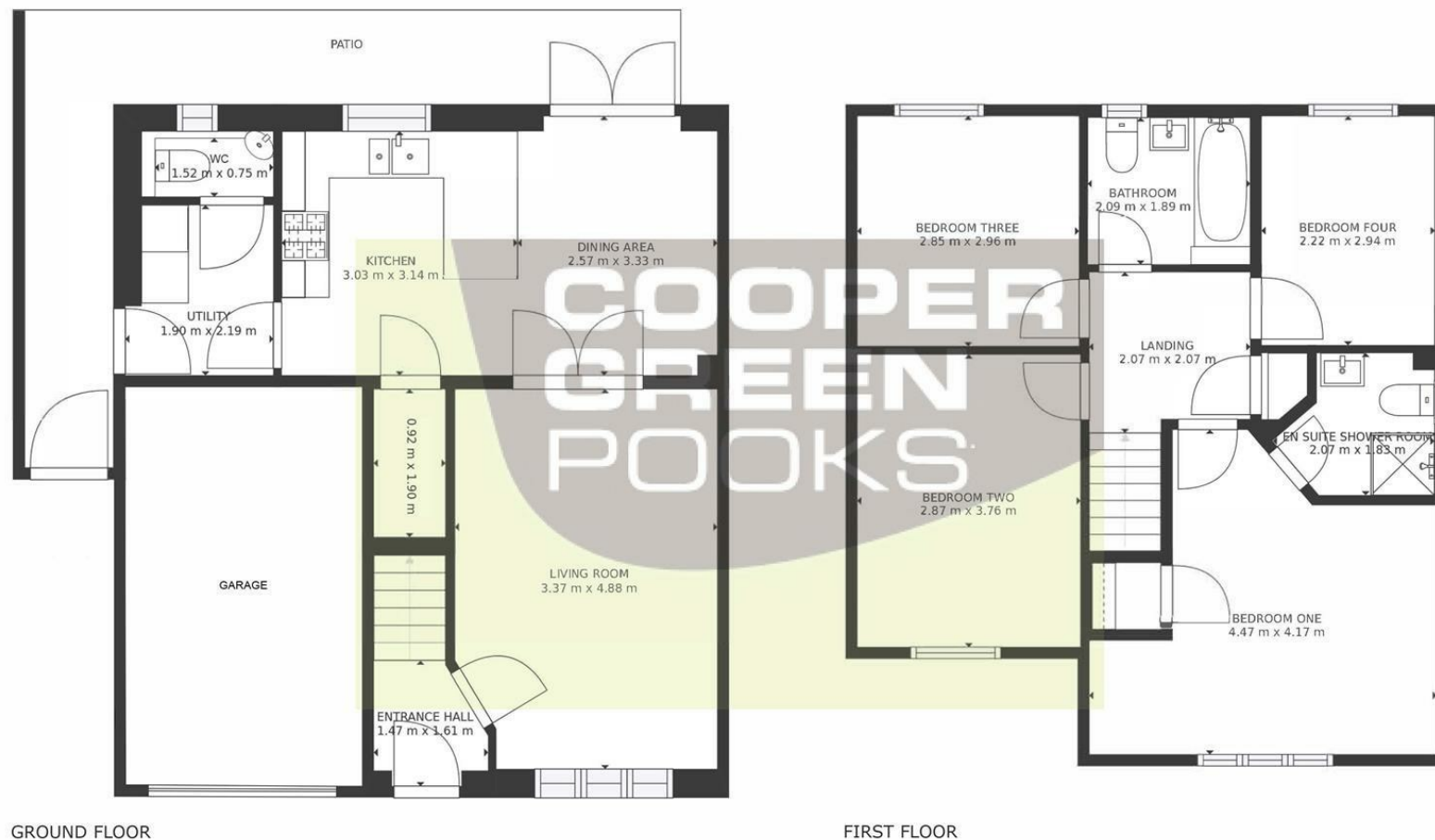
Unfurnished

Council Tax Band: D

Available: 10th July 2024

EPC: B

Floor Plans



GROSS INTERNAL AREA
GROUND FLOOR: 46m², FIRST FLOOR: 57m²
EXCLUDED AREAS: PATIO 16m²
TOTAL: 103m²

SIZES AND DIMENSIONS ARE APPROXIMATE, ACTUAL MAY VARY



These particulars, whilst believed to be accurate are set out as a general outline only for guidance and do not constitute any part of an offer or contract. Intending purchasers should not rely on them as statements of representation of fact, but must satisfy themselves by inspection or otherwise as to their accuracy. No person in this firm's employment has the authority to make or give any representation or warranty in respect of the property.