



Rossall Lodge, Isle Lane, Bicton, Shrewsbury, SY3 8DY
£2,600 Per Month



Rossall Lodge, Isle Lane, Bicton, Shrewsbury, SY3 8DY

£2,600 Per Month

VIRTUAL TOUR AVAILABLE - Substantial four bedroom detached property benefitting from extensive renovations, including recently installed bathrooms throughout. This spacious four double bedroom lodge lies in a sought-after country setting only three miles from the centre of the vibrant market town of Shrewsbury and less than three miles from both Shrewsbury School and Royal Shrewsbury Hospital. Set within its own private grounds, large gardens surround the property and there is the added benefit of two garages, one covered carport and an additional workshop/storage facility. With views over rolling countryside, the Wrekin is clearly visible 10 miles to the east. Walkers will enjoy easy access to country footpaths and the Severn Way and a recently installed patio is perfectly located to capture the evening/setting sun.

Available: 08/06/2

Description

Comprising: Long entrance hall, solid oak Kenton Jones kitchen including modern electric range cooker, integrated dishwasher and fridge, utility with space to accommodate two appliances and a further cooker, pantry, cloakroom, door to rear. Large living room with log burner, sunroom enjoying french window access to rear patio, ground floor master bedroom with en-suite bathroom, two further double bedrooms, level access shower room. Stairs to first floor landing, double bedroom with en-suite shower room. Large gardens. Two garages, one covered carport, a large driveway and an additional workshop/storage facility. Views over rolling countryside. Oil fired central heating. Double glazing. EPC E



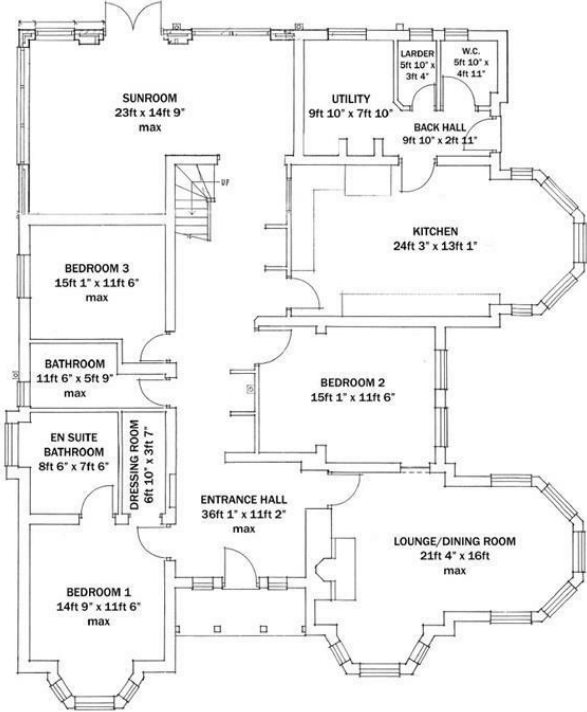
Unfurnished

Council Tax Band: F

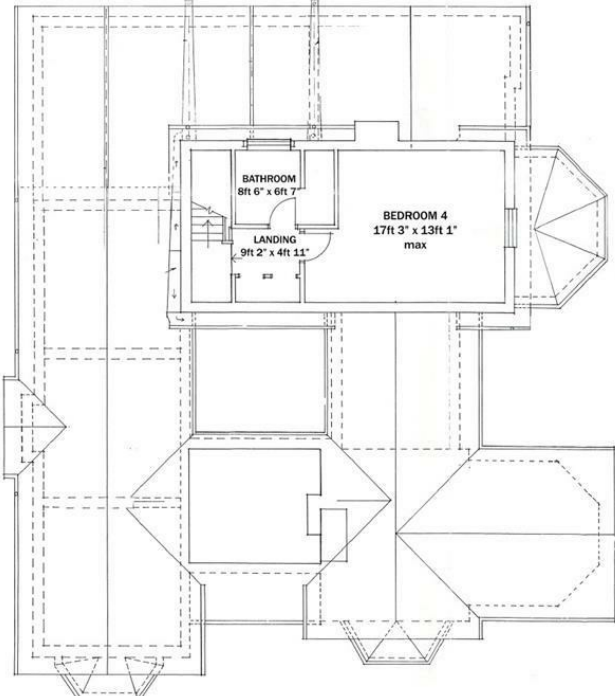
Available: 8th June 2024

EPC: E

Floor Plans



GROUND FLOOR



FIRST FLOOR

These particulars, whilst believed to be accurate are set out as a general outline only for guidance and do not constitute any part of an offer or contract. Intending purchasers should not rely on them as statements of representation of fact, but must satisfy themselves by inspection or otherwise as to their accuracy. No person in this firms employment has the authority to make or give any representation or warranty in respect of the property.