



82 The Old Meadow, Shrewsbury, SY2 6GA

2 bedroom second floor apartment — £199,950 Leasehold

82 The Old Meadow, Shrewsbury, SY2 6GA

Coopergreenpooks.co.uk

£199,950 Leasehold—2 bedroom second floor apartment

sales@cgpooks.co.uk

A beautifully presented and improved second floor apartment situated within this popular modern development, benefitting from private parking, fantastic communal gardens and riverside walks. The property is located a stone's throw from the heart of the town centre as well as excellent amenities and a range of bars/restaurants.

KEY FEATURES

- Good sized entrance hall with useful storage and high quality wood-effect flooring which also continues throughout the open plan areas
- Impressive open plan living/dining room with plenty of natural light
- Well-fitted kitchen, complete with integrated appliances and updated Metro tiled splashback
- Two bedrooms with built in wardrobes
- Separate family bathroom with shower
- Double glazed windows and gas fired central heating
- Private allocated parking, conveniently located just outside the car park entrance
- Landscaped communal gardens with direct access to riverside walks for residents to enjoy
- Secure gated entrance with entry code and intercom system
- Ideal for first time buyers and investors
- No upward chain

Cooper Green Pooks

3 Barker Street

Shrewsbury

SY1 1QF

www.cgpooks.co.uk

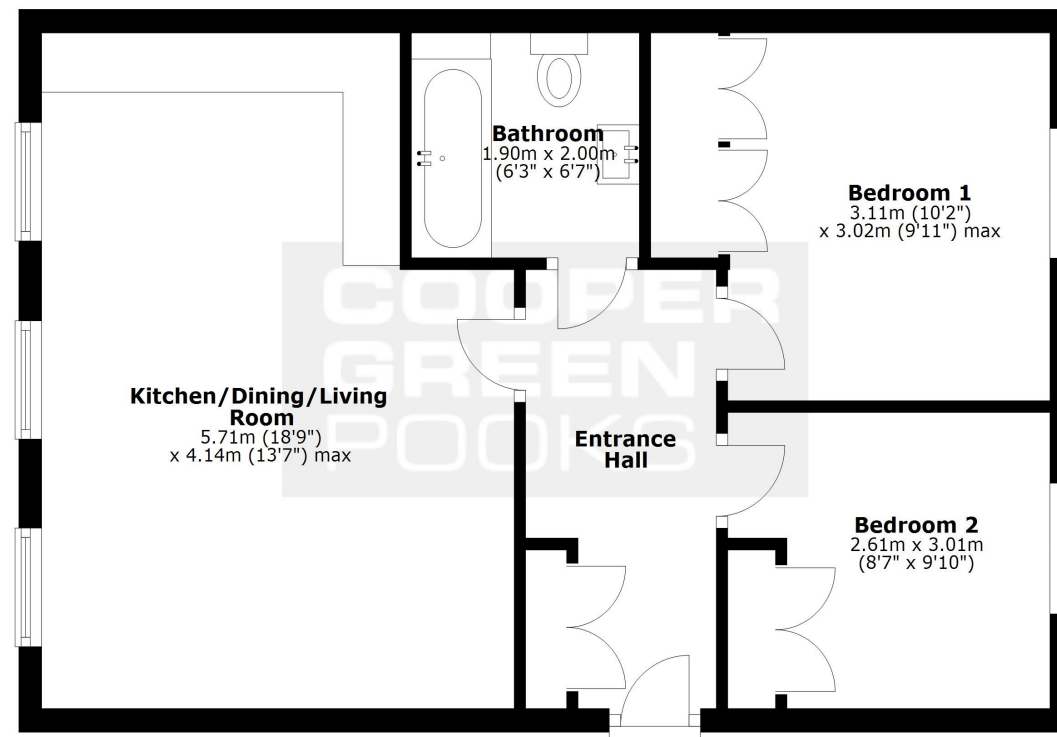
sales@cgpooks.co.uk

01743 276666



Second Floor

Approx. 50.5 sq. metres (543.1 sq. feet)



Total area: approx. 50.5 sq. metres (543.1 sq. feet)

We accept no responsibility for any mistake or inaccuracy contained within the floorplan. The floorplan is provided as a guide only and should be taken as an illustration only. The measurements, contents and positioning are approximations only and provided as a guidance tool and not an exact replication of the property.

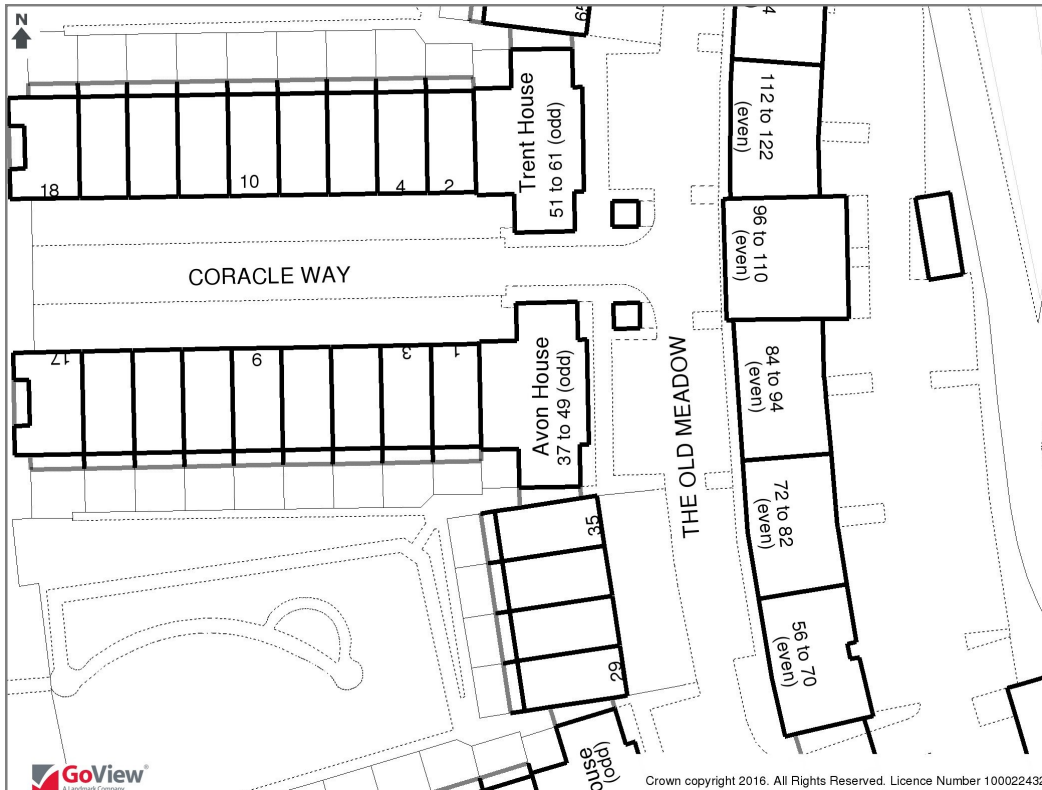
Plan produced using PlanUp.





82 The Old Meadow, Shrewsbury, SY2 6GA

£199,950 Leasehold—2 bedroom second floor apartment
sales@cgpooks.co.uk



Tenure	Leasehold
Local Authority	Shropshire Council
Council Tax	Band B
EPC Band	Band B
Services	All mains services are connected

Expert mortgage advice available
3 Barker St, Shrewsbury SY1 1QF
Cooper Green Pooks
01743 276666



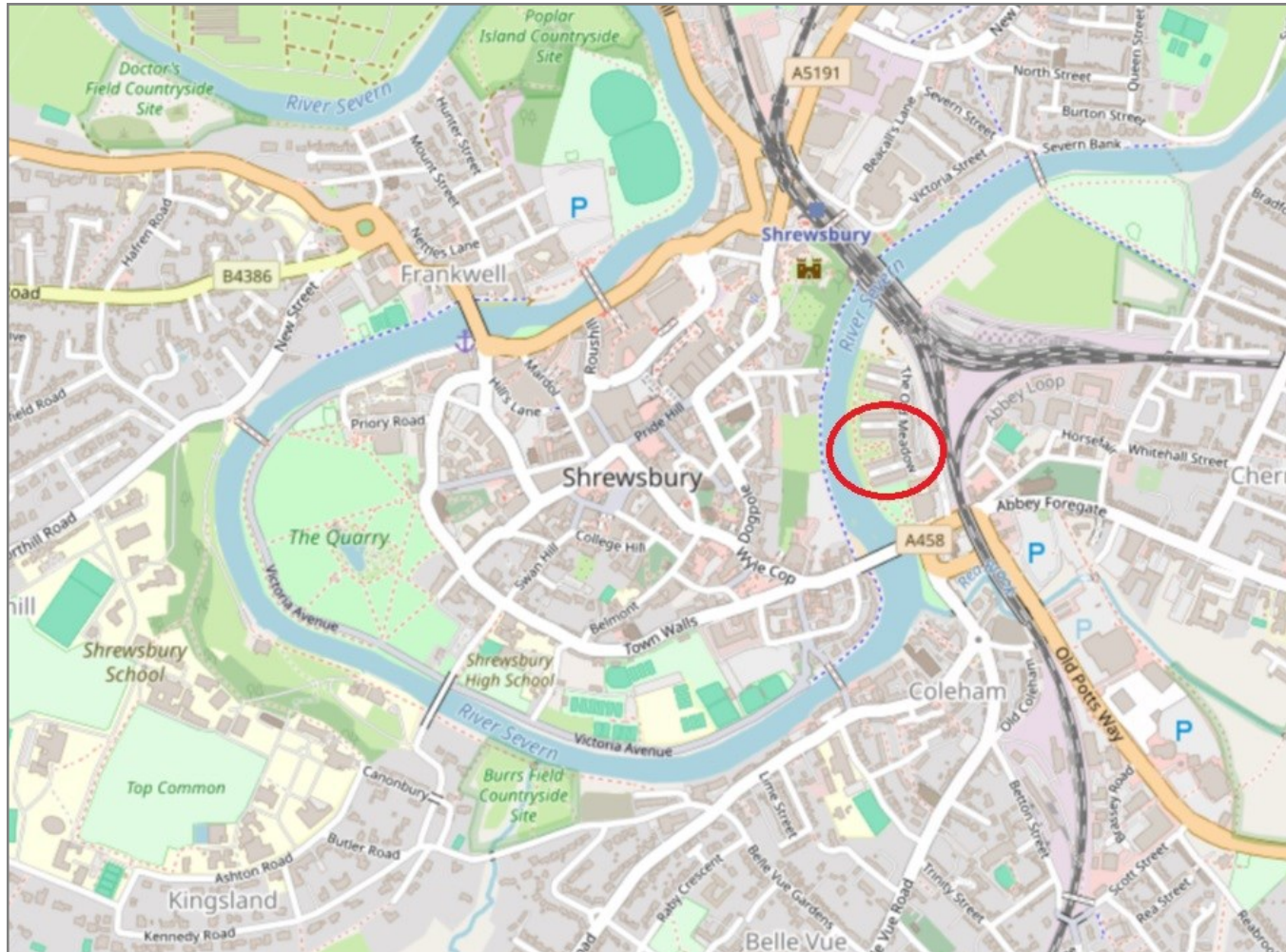
Your home may be repossessed if you do not keep up repayments on your mortgage.
There may be a fee for mortgage advice. The actual amount you pay will depend upon your circumstances. The fee is up to 1% but a typical fee is 0.3% of the amount borrowed.

82 The Old Meadow, Shrewsbury, SY2 6GA

Coopergreenpooks.co.uk

£199,950 Leasehold—2 bedroom second floor apartment

sales@cgpooks.co.uk



IMPORTANT NOTICE: Cooper Green Pooks for themselves and for the lessors or vendors of this property whose agents they are give notice that: 1 No appliances, services or service installations have been tested and no warranty as to suitability or serviceability is implied. Any prospective purchaser or lessee is advised to obtain verification from their surveyor or solicitor. 2. The particulars are set out as a general outline only for the guidance of the intended purchasers or lessees and do not constitute, nor constitute part of, an offer or contract. 3. All descriptions, reference to condition and necessary permissions for use and occupation and other details are given in good faith and are believed to be correct but any intending purchasers or lessees should not rely on them as statements or representation of fact but satisfy themselves by inspection or otherwise as to the correctness of each of them. 4. No person in the employment of Cooper Green Pooks has any authority to make or give any representation or warranty whatsoever in relation to this property. 5. All rentals and prices are quoted exclusive of Stamp Duty, legal and surveyors fees and any other associated purchasers or lessees costs. 6. Floor plans are indicative only and should not be relied on. 7. The plan showing the boundary of the property is indicative only and has not been checked against the legal title so should not be relied on. 8. All dimensions, floor areas and site areas are only approximate and should not be relied on. Dimensions are generally maximum room dimension.