



**2, Bligny Crescent, Rose Place, Bicton Heath, Shrewsbury, SY3 5FE**

£1,250 Per Month



2, Bligny Crescent, Rose Place, Bicton Heath, Shrewsbury, SY3 5FE

**£1,250 Per Month**

VIRTUAL TOUR AVAILABLE: Superb new build three bedroom semi-detached house located in a new development off Welshpool Road, a short distance to the west of Shrewsbury town centre. Benefitting from excellent school catchments, access to the ring road and close to Royal Shrewsbury Hospital.

PLEASE NOTE THAT A SHOWER OVER THE BATH AND WARDROBE IN BEROOM ONE ARE YET TO BE FITTED.

Available: Immediately

## Description

Comprising: Entrance lobby, downstairs WC, living room, kitchen including integrated oven, hob, washing machine, fridge/freezer and dishwasher, dining area with double doors to rear. Stairs to first floor landing including airing cupboard, master bedroom including fitted wardrobes and ensuite shower room, double bedroom including fitted wardrobes, single bedroom, family bathroom including shower. Gas central heating, double glazing, rear garden including extended patio and shed. Driveway parking for two cars. EPC B



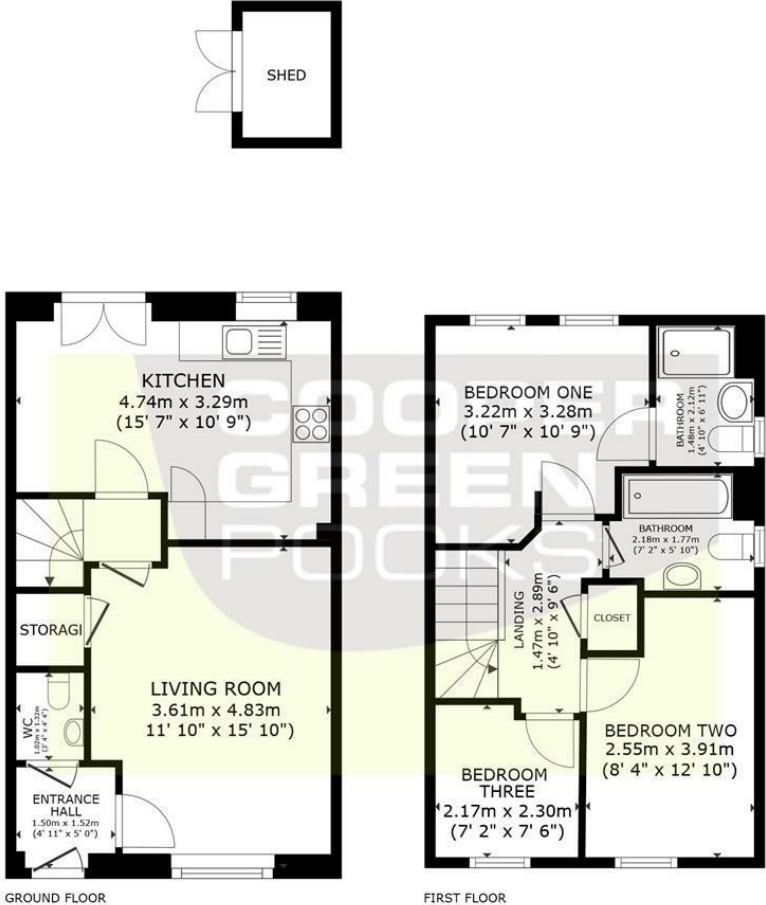
Unfurnished

Council Tax Band: New Build

Available: 25th April 2024

EPC: B

# Floor Plans



GROSS INTERNAL AREA  
 GROUND FLOOR 39.6 m<sup>2</sup> (427 sq.ft.) FIRST FLOOR 38.4 m<sup>2</sup> (413 sq.ft.)  
 TOTAL 78.0 m<sup>2</sup> (840 sq.ft.)

SIZES AND DIMENSIONS ARE APPROXIMATE, ACTUAL MAY VARY.

These particulars, whilst believed to be accurate are set out as a general outline only for guidance and do not constitute any part of an offer or contract. Intending purchasers should not rely on them as statements of representation of fact, but must satisfy themselves by inspection or otherwise as to their accuracy. No person in this firm's employment has the authority to make or give any representation or warranty in respect of the property.