

An aerial photograph of a large, multi-story brick building complex in Shrewsbury. The building features a prominent central courtyard with a paved area, several trees, and a set of stairs leading down. The building has a dark tiled roof with numerous dormer windows. The surrounding area includes other residential buildings and green spaces under a cloudy sky.

62, Benbow Quay, Chester Street, Shrewsbury, SY1 2DL
£800 Per Month



62, Benbow Quay, Chester Street, Shrewsbury, SY1 2DL

£800 Per Month

VIRTUAL TOUR AVAILABLE - Modern two double bedroom first floor apartment within a sought after development within walking distance of Shrewsbury railway station and the town centre.

Available: 05/06/24

Description

Comprising: Entrance hall with airing cupboard, living room, kitchen with fridge/freezer, washing machine, slimline dishwasher, oven & hob, two double bedrooms, bathroom with shower over bath. Allocated Parking Space. EPC C



Unfurnished

Council Tax Band: A

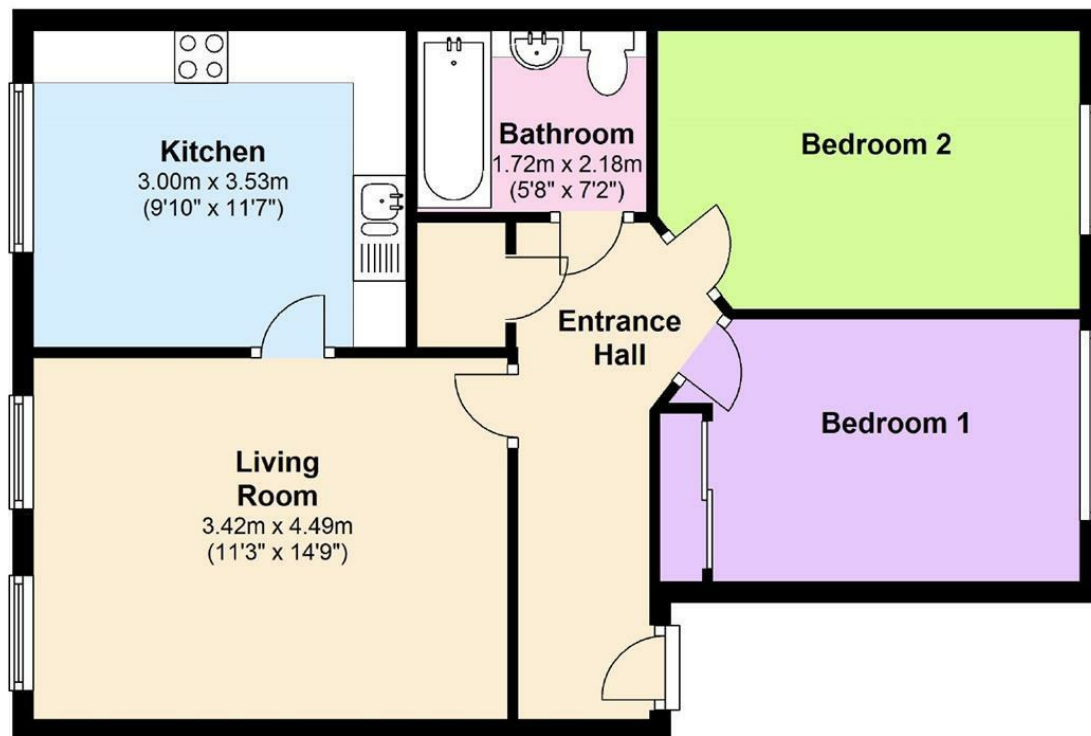
Available: 5th June 2024

EPC: C

Floor Plans

First Floor

Approx. 59.3 sq. metres (638.5 sq. feet)



Total area: approx. 59.3 sq. metres (638.5 sq. feet)

We accept no responsibility for any mistake or inaccuracy contained within the floorplan. The floorplan is provided as a guide only and should be taken as an illustration only. The measurements, contents and positioning are approximations only and provided as a guidance tool and not an exact replication of the property.

Plan produced using PlanUp.

These particulars, whilst believed to be accurate are set out as a general outline only for guidance and do not constitute any part of an offer or contract. Intending purchasers should not rely on them as statements of representation of fact, but must satisfy themselves by inspection or otherwise as to their accuracy. No person in this firm's employment has the authority to make or give any representation or warranty in respect of the property.