



**26, St Julians Mews, William Way, Shrewsbury, SY1 1AD**  
£675 Per Month





26, St Julians Mews, William Way, Shrewsbury, SY1 1AD

**£675 Per Month**

VIRTUAL TOUR AVAILABLE - Modern one double bedroom ground floor apartment in this popular town centre development at the foot of Shrewsbury's historic Wyle Cop situated on the edge of the beautiful Quarry Park. Includes a secure allocated parking space and courtyard to rear.

Available: 15/05/24

## Description

Comprising: Entrance hall with storage cupboard, kitchen/living/dining room , oven, gas hob, fridge/freezer and washing machine, large bedroom with doors to private rear courtyard, bathroom with shower over bath and further storage cupboard. One allocated parking space. Double glazing. Gas central heating. EPC C

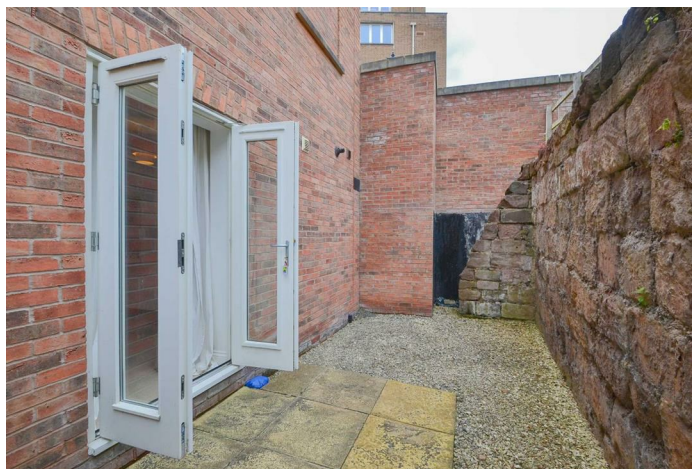


Unfurnished

Council Tax Band: A

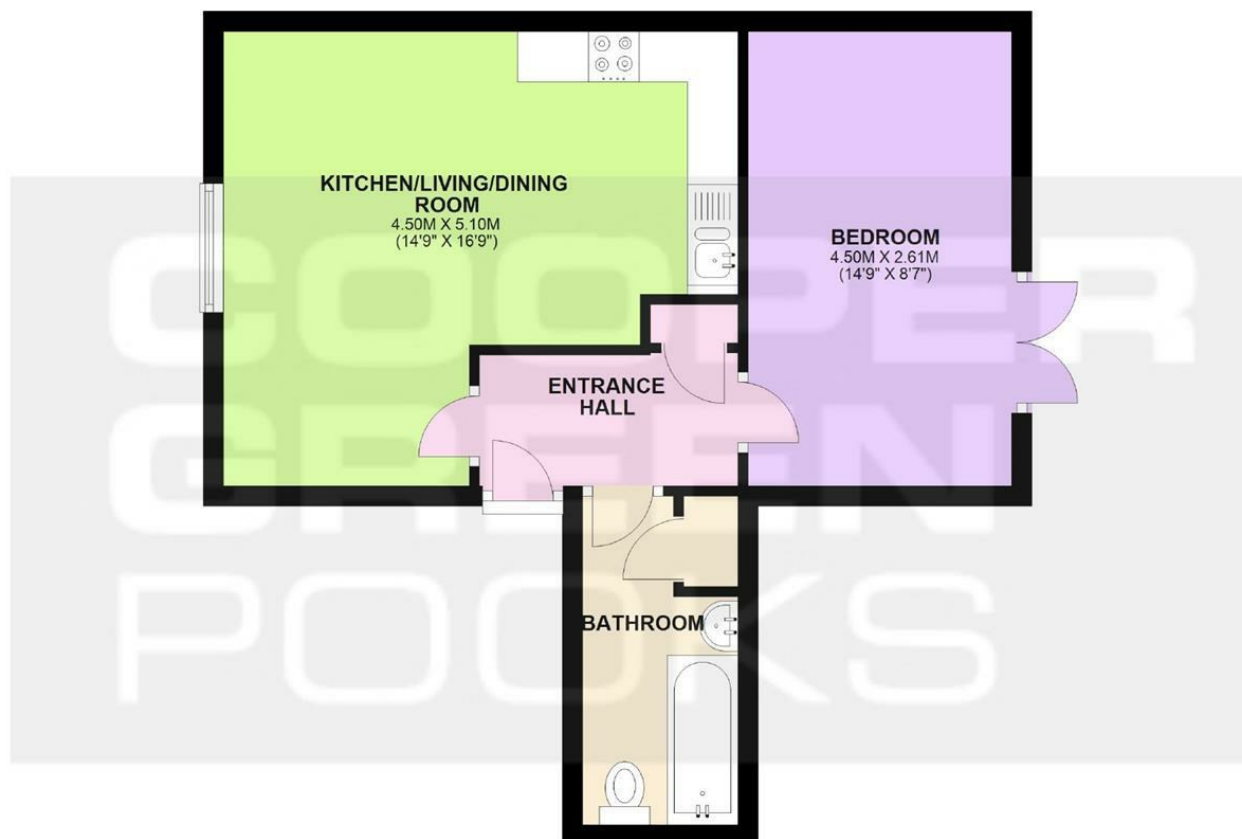
Available: 15th May 2024

EPC: C



## Floor Plans

### GROUND FLOOR APPROX. 40.3 SQ. METRES (433.9 SQ. FEET)



**TOTAL AREA: APPROX. 40.3 SQ. METRES (433.9 SQ. FEET)**

We accept no responsibility for any mistake or inaccuracy contained within the floorplan. The floorplan is provided as a guide only and should be taken as an illustration only. The measurements, contents and positioning are approximations only and provided as a guidance tool and not an exact replication of the property.

Plan produced using PlanUp.

These particulars, whilst believed to be accurate are set out as a general outline only for guidance and do not constitute any part of an offer or contract. Intending purchasers should not rely on them as statements of representation of fact, but must satisfy themselves by inspection or otherwise as to their accuracy. No person in this firm's employment has the authority to make or give any representation or warranty in respect of the property.