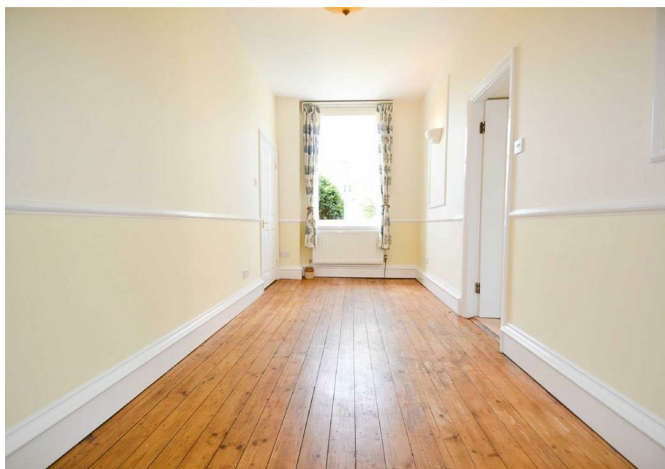




Lower House, Westbury, Shrewsbury, SY5 9QP

£995 Per Month



Lower House, Westbury, Shrewsbury, SY5 9QP

£995 Per Month

VIRTUAL TOUR AVAILABLE - Unique listed four storey link detached house completely renovated in 2002 to 'new build' standards. The property is in the heart of a popular village a short distance to the west of Shrewsbury. The property is well situated for both access to Royal Shrewsbury Hospital and the ring road.

Available: Immediately

Description

Comprising: Entrance hall, large living room with log burner, dining room, kitchen including oven and gas hob and door to rear. Spiral staircase to first floor landing, master bedroom including fitted wardrobes and en-suite bathroom, further bedroom including en-suite shower room. Further staircase to study area with exposed timber beams, large double bedroom with en-suite bathroom. From the hall there is a spiral staircase to the basement including separate WC, shower room and large family room/home office or bedroom four. Garden to front and side including two sheds and decking. Parking for up to four cars. Gas central heating. EPC D



Unfurnished

Council Tax Band: E

Available: 27th April 2024

EPC: D

Floor Plans



These particulars, whilst believed to be accurate are set out as a general outline only for guidance and do not constitute any part of an offer or contract. Intending purchasers should not rely on them as statements of representation of fact, but must satisfy themselves by inspection or otherwise as to their accuracy. No person in this firm's employment has the authority to make or give any representation or warranty in respect of the property.