



34, Greenfield Street, Shrewsbury, SY1 2QE
£800 Per Month



34, Greenfield Street, Shrewsbury, SY1 2QE

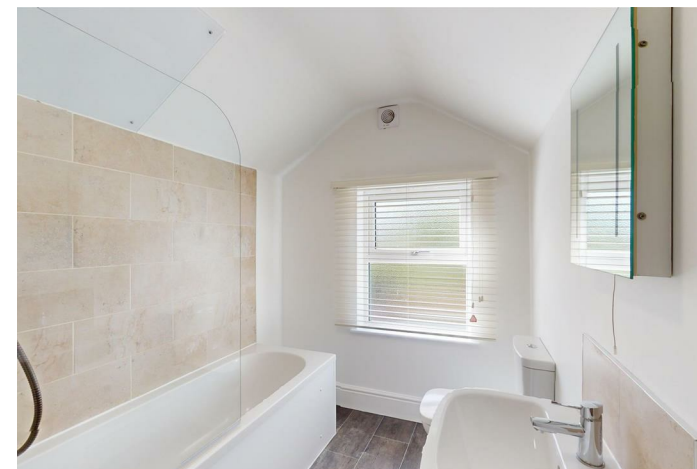
£800 Per Month

VIRTUAL TOUR AVAILABLE: Refurbished two bedroom mid terraced Victorian house in a most attractive established residential area just to the north of Shrewsbury town centre.

Available: Immediately

Description

Comprising: Living room with feature fireplace (capped), dining room with feature fireplace (capped) and understairs cupboard, modern kitchen including door to rear. Upstairs to landing, master bedroom including wardrobe, further bedroom, modern bathroom including airing cupboard and shower over bath. On street parking, gas central heating, double glazing. EPC C



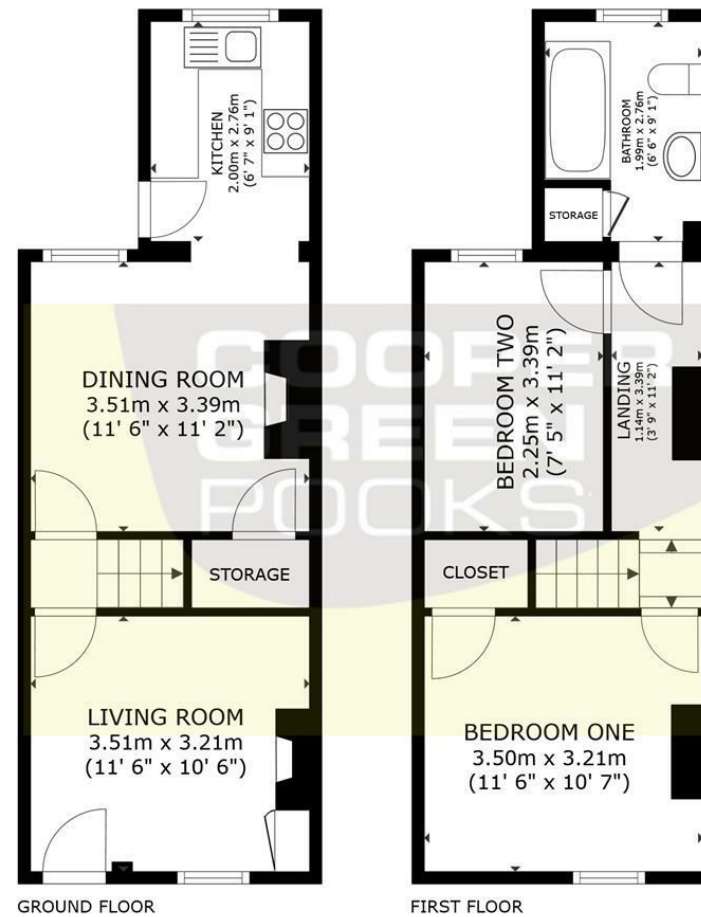
Unfurnished

Council Tax Band: B

Available: 19th April 2024

EPC: C

Floor Plans



GROSS INTERNAL AREA
GROUND FLOOR: 32 m² (355 sq ft), FIRST FLOOR: 32.9 m² (354 sq ft).
TOTAL: 65.9 m² (709 sq ft)

SIZES AND DIMENSIONS ARE APPROXIMATE, ACTUAL MAY VARY.

These particulars, whilst believed to be accurate are set out as a general outline only for guidance and do not constitute any part of an offer or contract. Intending purchasers should not rely on them as statements of representation of fact, but must satisfy themselves by inspection or otherwise as to their accuracy. No person in this firm's employment has the authority to make or give any representation or warranty in respect of the property.