



62, Abbey Wharf, Mill Road, Shrewsbury, SY2 6AY
£1,100 Per Month



62, Abbey Wharf, Mill Road, Shrewsbury, SY2 6AY

£1,100 Per Month

VIRTUAL TOUR AVAILABLE - Immaculate new build three-bedroom, semi-detached townhouse set over three floors, situated in Abbey Foregate and within easy walking distance to Shrewsbury town centre. The property benefits from a courtyard garden and one allocated parking space.

Available: IMMEDIATELY

Description

Comprising: Kitchen with integrated oven and electric hob, living room, downstairs WC, master bedroom with ensuite shower room, two further double bedrooms, family bathroom with shower over bath, paved patio garden with shed. One allocated parking space. EPC C



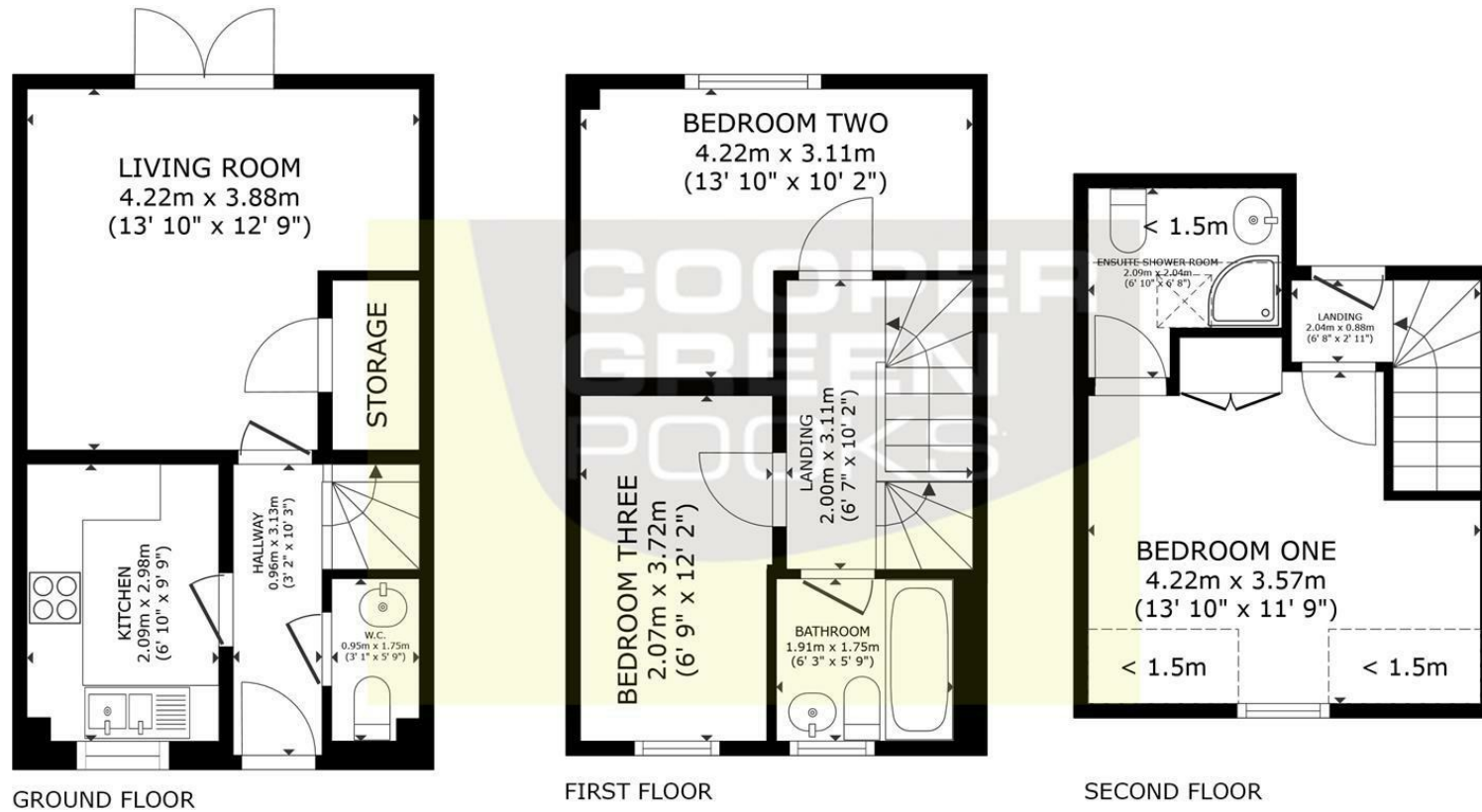
Unfurnished

Council Tax Band: C

Available: 19th April 2024

EPC: C

Floor Plans



GROSS INTERNAL AREA
 GROUND FLOOR: 29.8 m² (320 sq ft), FIRST FLOOR: 29.2 m² (314 sq ft),
 SECOND FLOOR: 17.0 m² (183 sq ft)
 TOTAL: 76 m² (818 sq ft)

SIZES AND DIMENSIONS ARE APPROXIMATE, ACTUAL MAY VARY.

These particulars, whilst believed to be accurate are set out as a general outline only for guidance and do not constitute any part of an offer or contract. Intending purchasers should not rely on them as statements of representation of fact, but must satisfy themselves by inspection or otherwise as to their accuracy. No person in this firm's employment has the authority to make or give any representation or warranty in respect of the property.