



**19 Drapers Rise, Sweetlake Meadow, Shrewsbury, SY3 9FL**

4 bedroom detached house — £550,000 Freehold

## 19 Drapers Rise, Sweetlake Meadow, Shrewsbury, SY3 9FL

Coopergreenpooks.co.uk

£550,000 Freehold — 4 bedroom detached house

sales@cgpooks.co.uk

**Occupying a lovely, quiet position within a popular modern development, while benefitting from a private south facing garden, this beautifully presented and well-designed detached family house offers spacious and practical accommodation, finished to a high standard throughout.**

### KEY FEATURES

- Good sized entrance hall with cloakroom and useful under stairs storage
- Living room with feature fireplace and bay window to front
- Fantastic open plan kitchen/dining/family room with large store/airing cupboard and glazed double doors to the rear garden
- Well-fitted kitchen, complete with integrated appliances, granite work surfaces and breakfast bar
- Separate utility connecting to both the integral garage and garden
- Staircase from entrance hall leading to a light landing area with additional storage
- Impressive master bedroom with dressing area, built in wardrobes and en-suite shower room
- The second bedroom also has built in wardrobes and an en-suite shower room
- Two further double bedrooms, both with views to the rear, and family bathroom which has a separate shower
- uPVC double glazed windows and gas fired central heating
- Private south facing rear garden, laid to lawn with paved and decked terraces, pergola, timber store and gated access to side
- Block paved driveway to front providing plenty of parking
- A superb location, just a short distance from a choice of primary and secondary schools, Radbrook's excellent range of amenities, and only two miles from the town centre

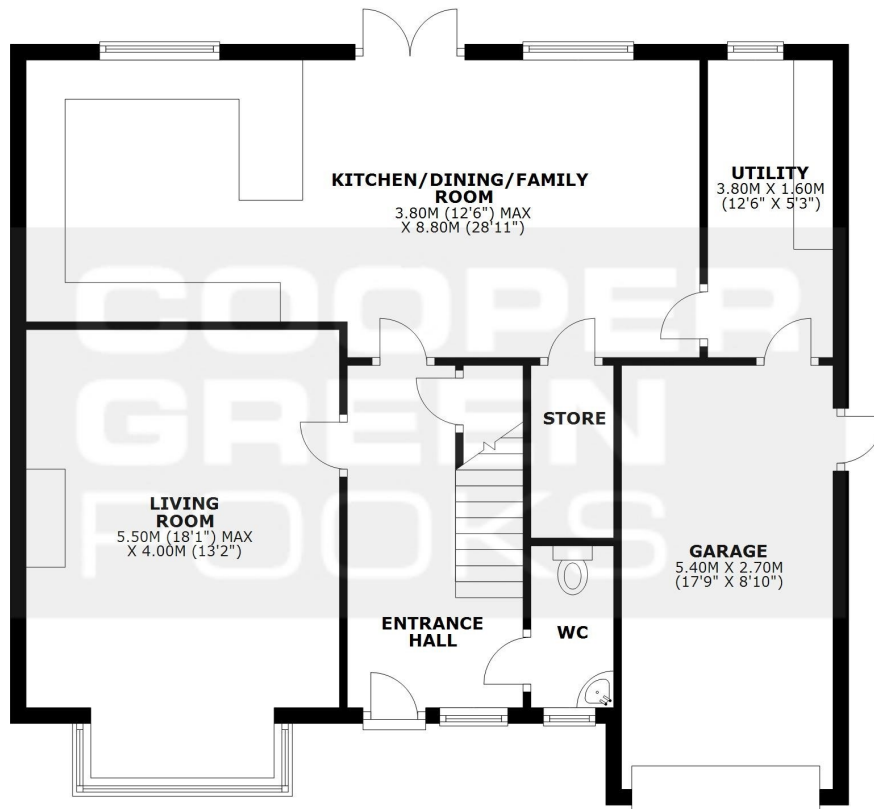
Cooper Green Pooks  
3 Barker Street  
Shrewsbury  
SY1 1QF



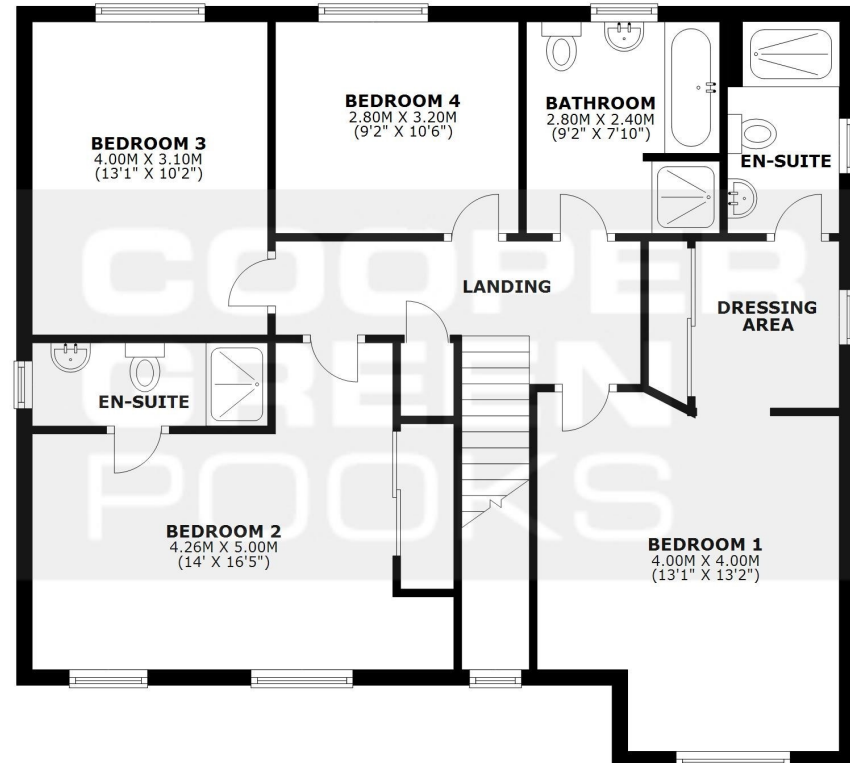
£550,000 Freehold — 4 bedroom detached house

sales@cgpooks.co.uk

**GROUND FLOOR**  
APPROX. 85.8 SQ. METRES (923.6 SQ. FEET)



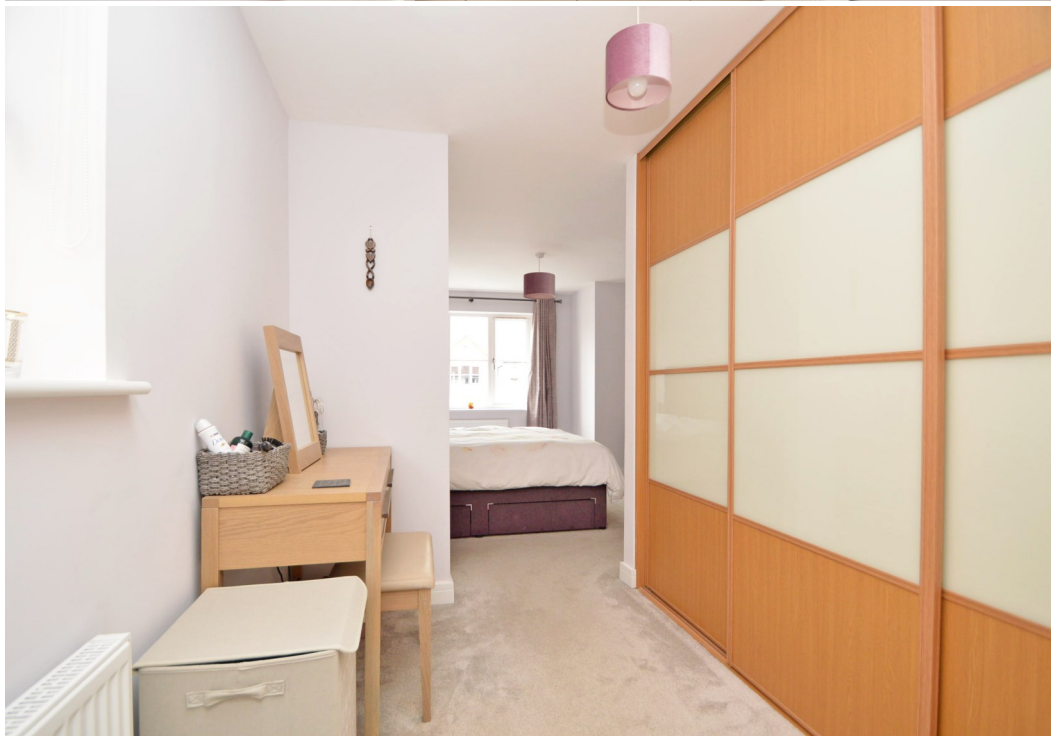
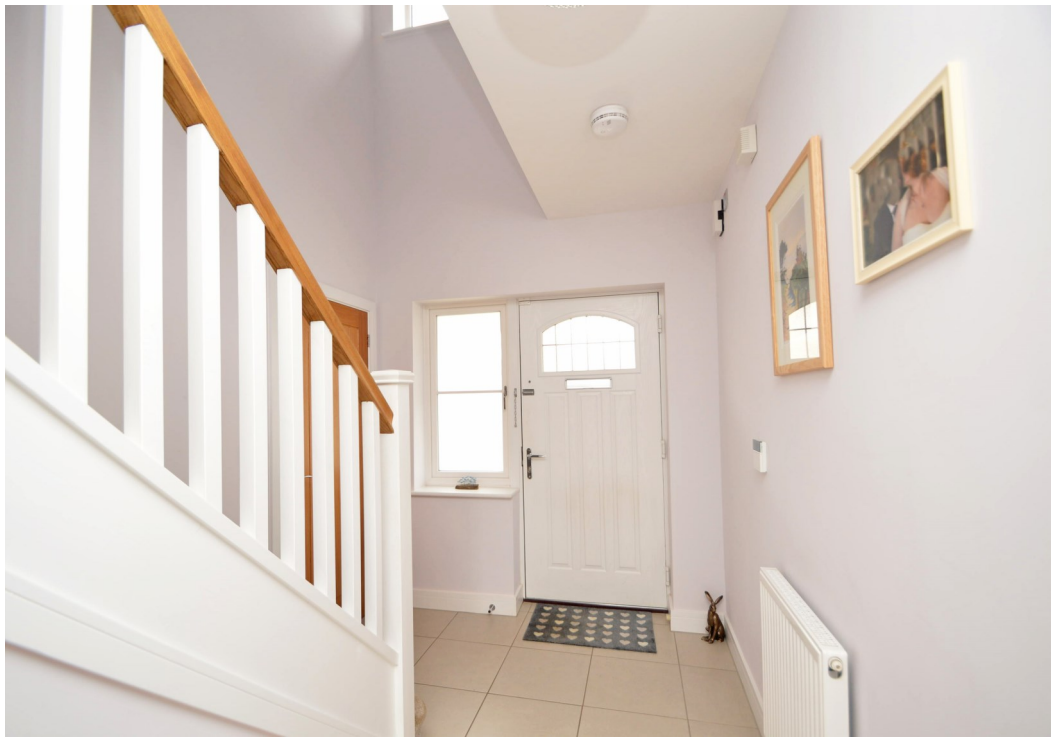
**FIRST FLOOR**  
APPROX. 87.5 SQ. METRES (942.3 SQ. FEET)



TOTAL AREA: APPROX. 173.4 SQ. METRES (1866.0 SQ. FEET)

We accept no responsibility for any mistake or inaccuracy contained within the floorplan. The floorplan is provided as a guide only and should be taken as an illustration only. The measurements, contents and positioning are approximations only and provided as a guidance tool and not an exact replication of the property.  
Plan produced using PlanUp.





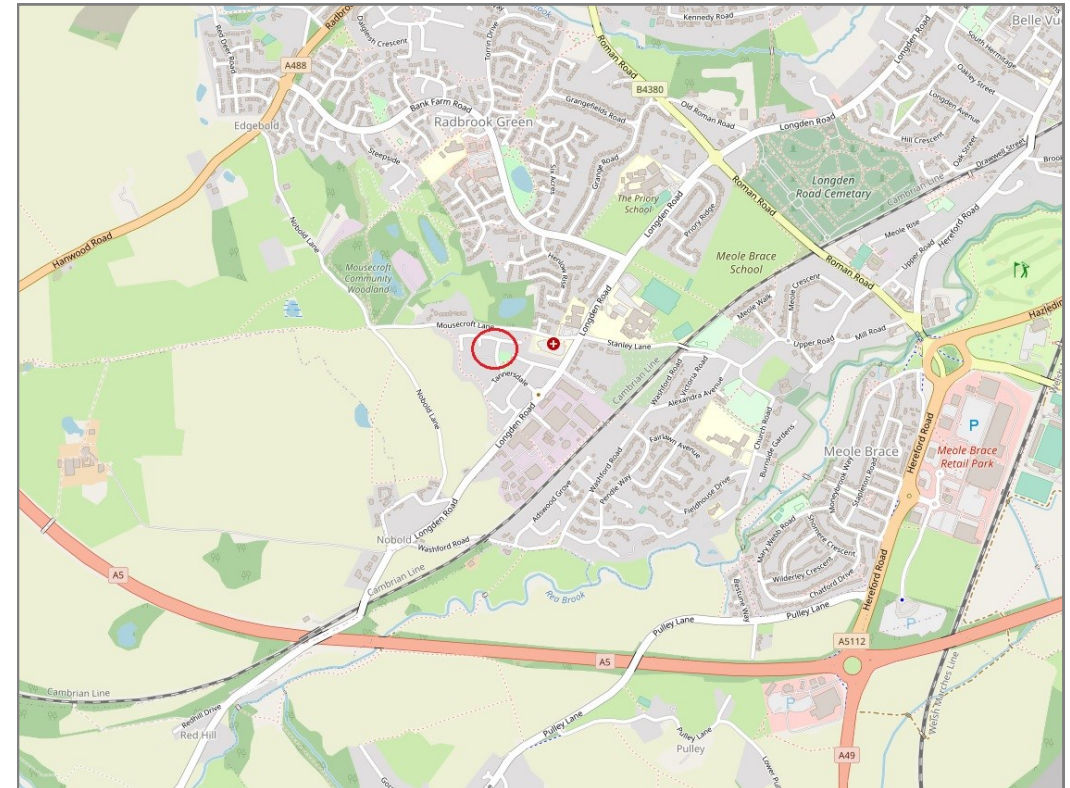




# 19 Drapers Rise, Sweetlake Meadow, Shrewsbury, SY3 9FL

£550,000 Freehold — 4 bedroom detached house

sales@cgpooks.co.uk



BOUNDARIES NOT CONFIRMED

|                 |   |
|-----------------|---|
| Tenure          | <b>Freehold</b>                         |
| Local Authority | <b>Shropshire Council</b>               |
| Council Tax     | <b>Band F</b>                           |
| EPC Band        | <b>Band B</b>                           |
| Services        | <b>All mains services are connected</b> |

**Expert mortgage advice available**  
3 Barker St, Shrewsbury SY1 1QF  
**Cooper Green Pooks**  
**01743 276666**



Your home may be repossessed if you do not keep up repayments on your mortgage.  
There may be a fee for mortgage advice. The actual amount you pay will depend upon your circumstances. The fee is up to 1% but a typical fee is 0.3% of the amount borrowed.

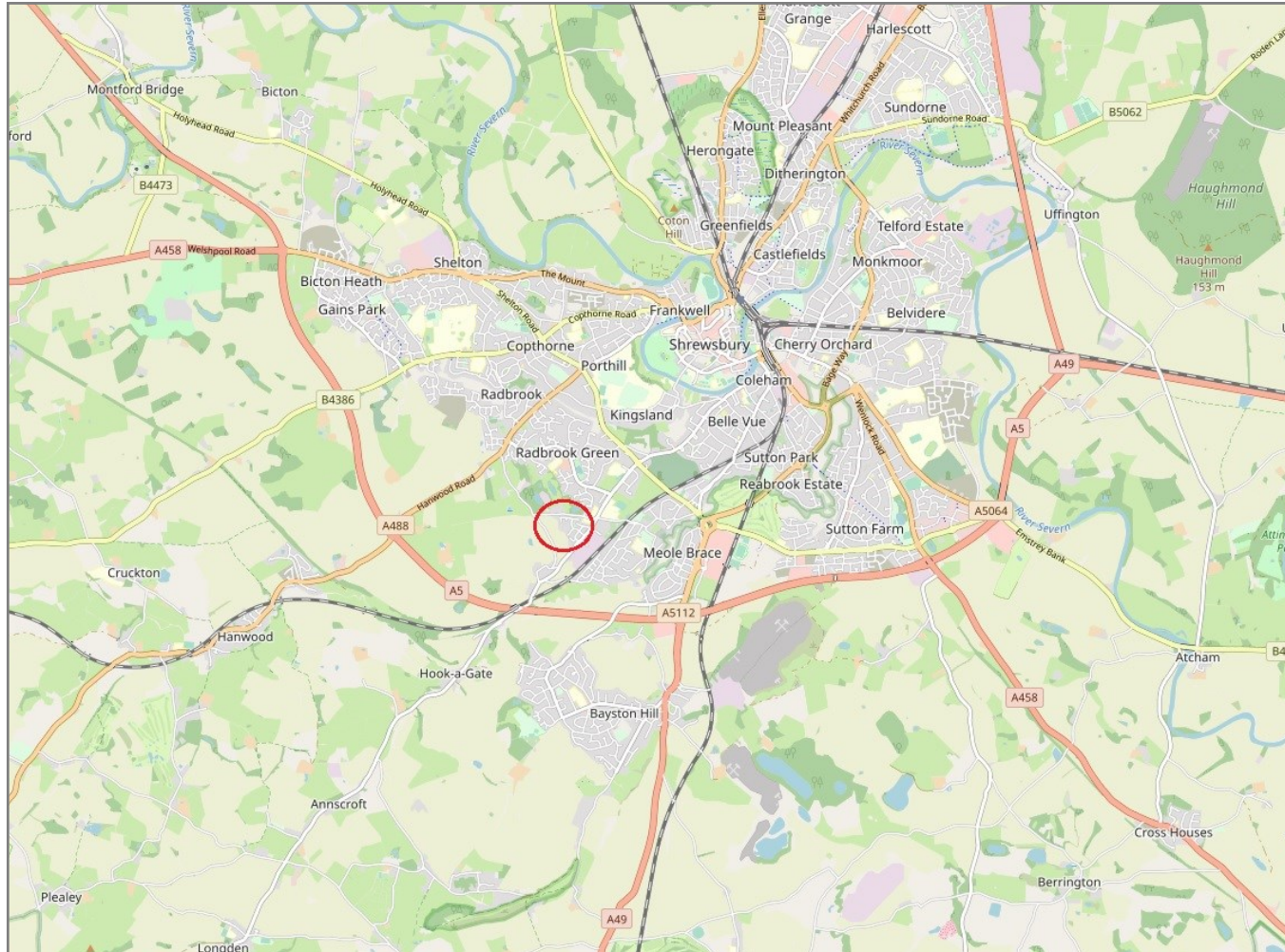


# 19 Drapers Rise, Sweetlake Meadow, Shrewsbury, SY3 9FL

Coopergreenpooks.co.uk

£550,000 Freehold — 4 bedroom detached house

sales@cgpooks.co.uk



**IMPORTANT NOTICE:** Cooper Green Pooks for themselves and for the lessors or vendors of this property whose agents they are give notice that: 1 No appliances, services or service installations have been tested and no warranty as to suitability or serviceability is implied. Any prospective purchaser or lessee is advised to obtain verification from their surveyor or solicitor. 2. The particulars are set out as a general outline only for the guidance of the intended purchasers or lessees and do not constitute, nor constitute part of, an offer or contract. 3. All descriptions, reference to condition and necessary permissions for use and occupation and other details are given in good faith and are believed to be correct but any intending purchasers or lessees should not rely on them as statements or representation of fact but satisfy themselves by inspection or otherwise as to the correctness of each of them. 4. No person in the employment of Cooper Green Pooks has any authority to make or give any representation or warranty whatsoever in relation to this property. 5. All rentals and prices are quoted exclusive of Stamp Duty, legal and surveyors fees and any other associated purchasers or lessees costs. 6. Floor plans are indicative only and should not be relied on. 7. The plan showing the boundary of the property is indicative only and has not been checked against the legal title so should not be relied on. 8. All dimensions, floor areas and site areas are only approximate and should not be relied on. Dimensions are generally maximum room dimension.