



4 Burlington Place, Belle Vue, Shrewsbury, SY3 7LF

2 bedroom ground floor apartment — £175,000 Leasehold

4 Burlington Place, Belle Vue, Shrewsbury, SY3 7LF

Coopergreenpooks.co.uk

£175,000 Leasehold—2 bedroom ground floor apartment

sales@cgpooks.co.uk

A modern purpose built ground floor apartment set within this very attractively designed development in the popular Belle Vue area, a short walk from for the excellent amenities of Coleham and the town centre.

KEY FEATURES

- Walking distance from town centre, several good schools and the excellent and varied local amenities of Coleham
- Quiet courtyard setting with private parking space and additional guest parking
- Gas fired central heating and double glazed windows
- Attractively presented and well laid out accommodation
- Open plan kitchen/dining and living space
- Two double bedrooms and bathroom
- No upward chain

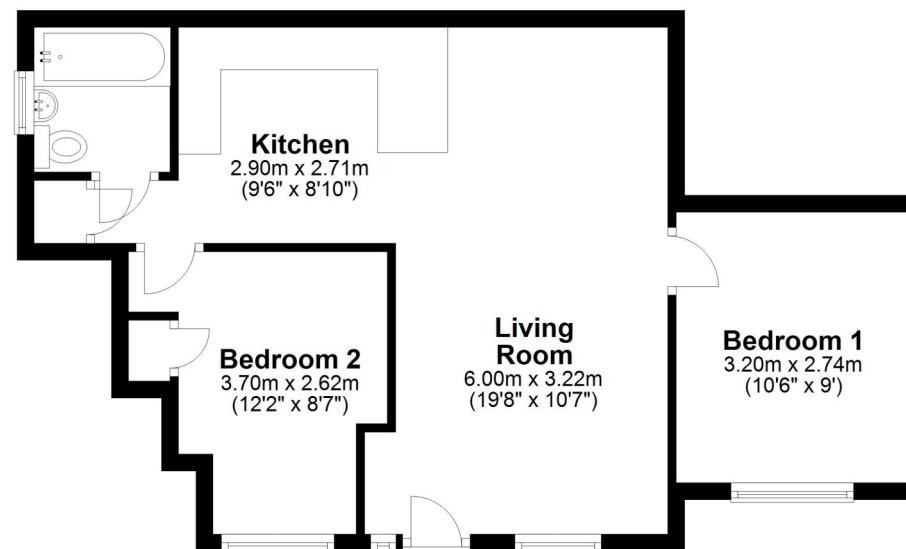
Cooper Green Pooks
3 Barker Street
Shrewsbury
SY1 1QF

www.cgpooks.co.uk
sales@cgpooks.co.uk
01743 276666



Ground Floor

Approx. 49.2 sq. metres (530.1 sq. feet)



Total area: approx. 49.2 sq. metres (530.1 sq. feet)

We accept no responsibility for any mistake or inaccuracy contained within the floorplan. The floorplan is provided as a guide only and should be taken as an illustration only. The measurements, contents and positioning are approximations only and provided as a guidance tool and not an exact replication of the property.
Plan produced using PlanUp.





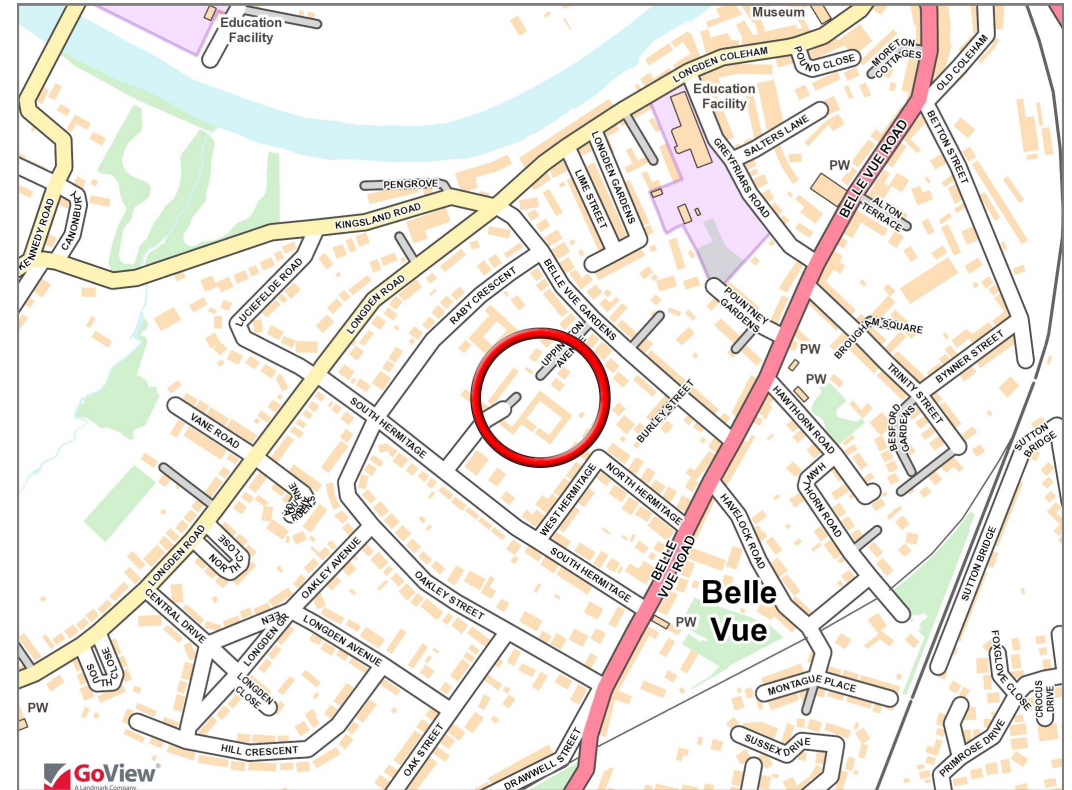
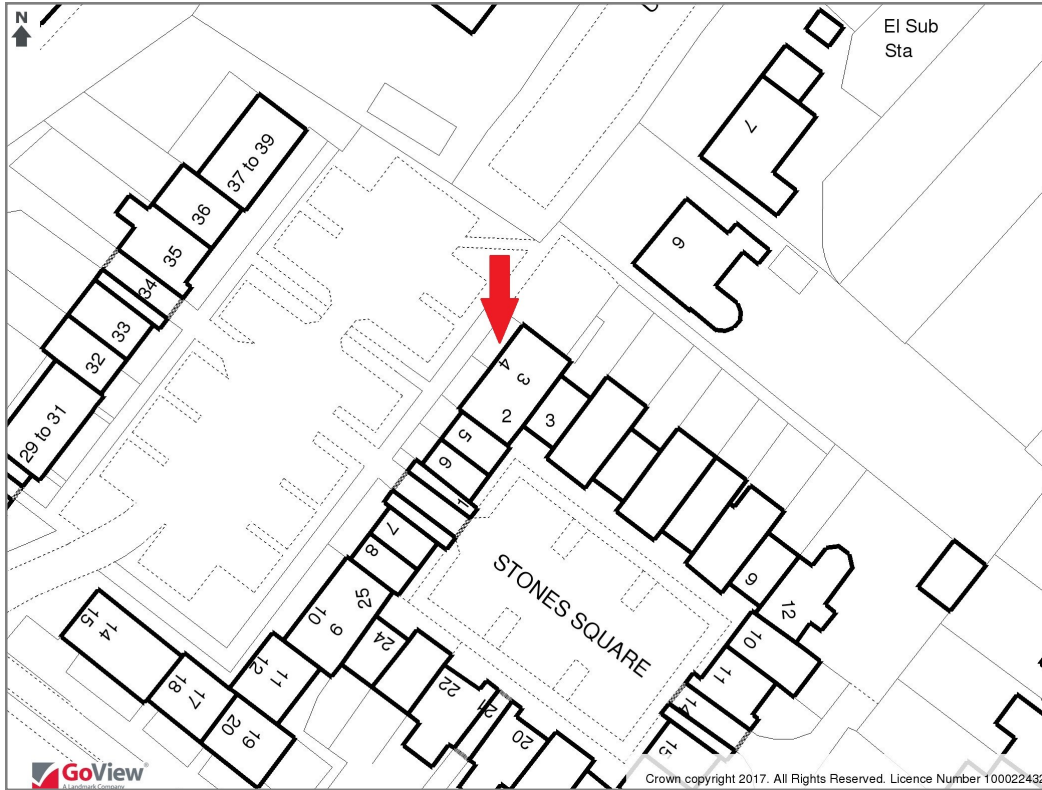


4 Burlington Place, Belle Vue, Shrewsbury, SY3 7LF

Coopergreenpooks.co.uk

£175,000 Leasehold—2 bedroom ground floor apartment

sales@cgpooks.co.uk



Tenure	Leasehold
Local Authority	Shropshire Council
Council Tax	Band B
EPC	TBC
Services	All mains services are connected

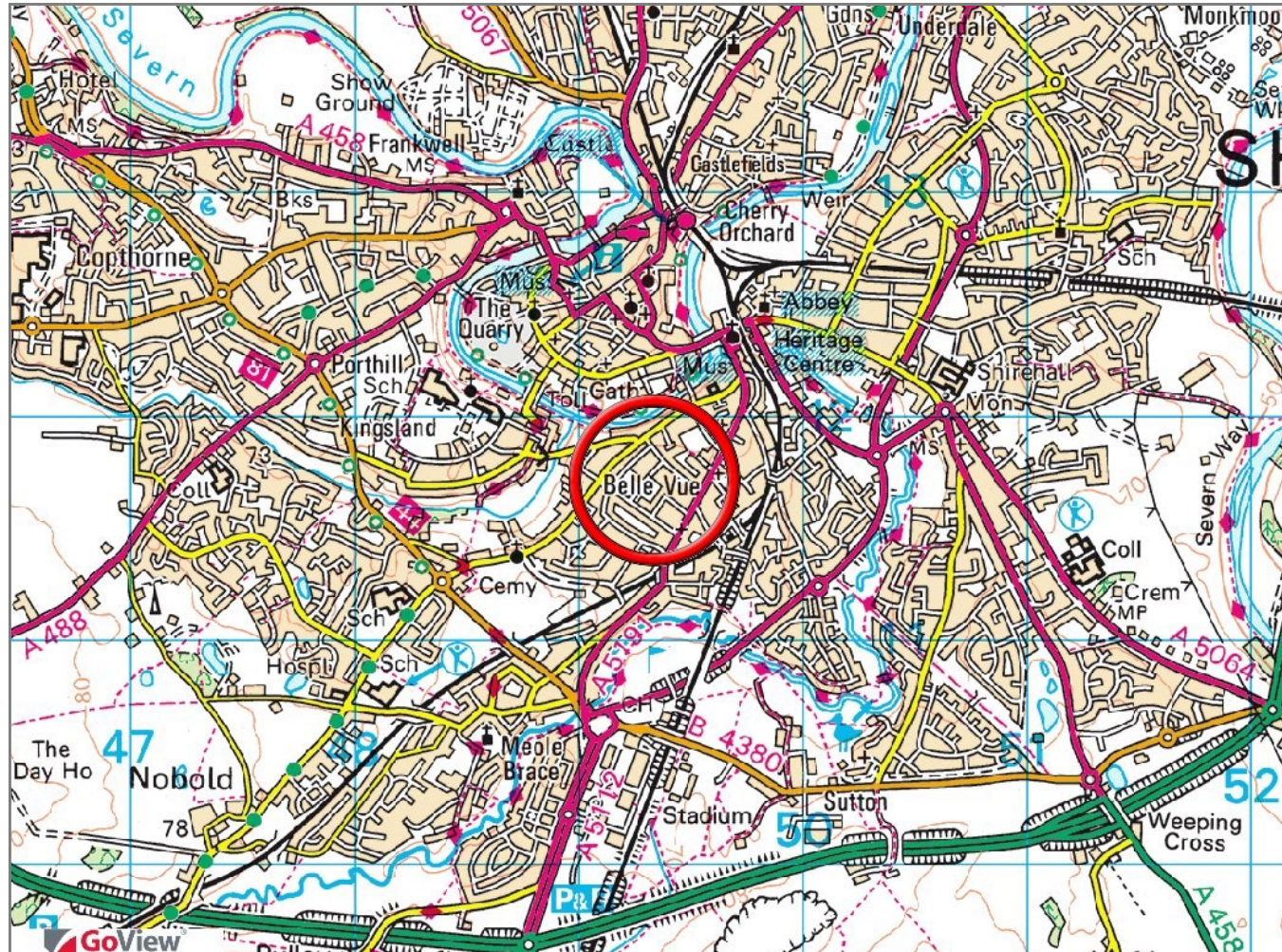


4 Burlington Place, Belle Vue, Shrewsbury, SY3 7LF

Coopergreenpooks.co.uk

£175,000 Leasehold—2 bedroom ground floor apartment

sales@cgpooks.co.uk



IMPORTANT NOTICE: Cooper Green Pooks for themselves and for the lessors or vendors of this property whose agents they are give notice that: 1. No appliances, services or service installations have been tested and no warranty as to suitability or serviceability is implied. Any prospective purchaser or lessee is advised to obtain verification from their surveyor or solicitor. 2. The particulars are set out as a general outline only for the guidance of the intended purchasers or lessees and do not constitute, nor constitute part of, an offer or contract. 3. All descriptions, reference to condition and necessary permissions for use and occupation and other details are given in good faith and are believed to be correct but any intending purchasers or lessees should not rely on them as statements or representation of fact but satisfy themselves by inspection or otherwise as to the correctness of each of them. 4. No person in the employment of Cooper Green Pooks has any authority to make or give any representation or warranty whatsoever in relation to this property. 5. All rentals and prices are quoted exclusive of Stamp Duty, legal and surveyors fees and any other associated purchasers or lessees costs. 6. Floor plans are indicative only and should not be relied on. 7. The plan showing the boundary of the property is indicative only and has not been checked against the legal title so should not be relied on. 8. All dimensions, floor areas and site areas are only approximate and should not be relied on. Dimensions are generally maximum room dimension.