



**9, Rothley Close, Radbrook Green, Shrewsbury, SY3 6AN**  
£1,300 Per Month





9, Rothley Close, Radbrook Green, Shrewsbury, SY3 6AN

**£1,300 Per Month**

VIRTUAL TOUR AVAILABLE - Modern four bedroom detached house in a sought after residential area close to Royal Shrewsbury Hospital and in the catchment of popular primary and secondary schools. Includes large garage and driveway parking.

Available: 11/05/24



## Description

Comprising: Entrance hall, WC, spacious kitchen including double oven, gas hob & dishwasher. Large living room, separate dining room, conservatory. Stairs to first floor, four double bedrooms, family bathroom including shower. Front and rear garden, good sized driveway, large garage. Gas central heating, double glazing. EPC D



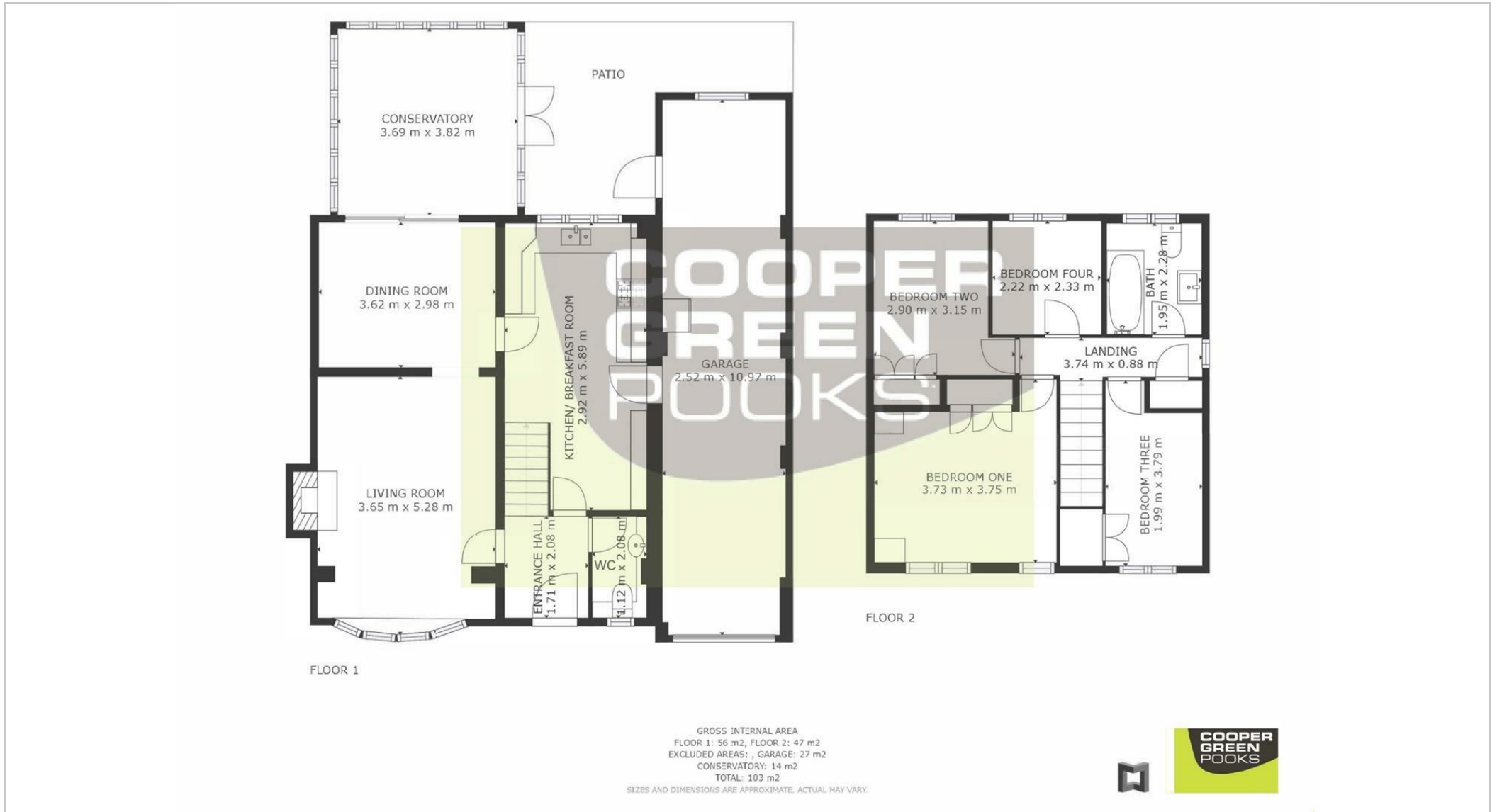
Unfurnished

Council Tax Band: D

Available: 11th May 2024

EPC: D

## Floor Plans



These particulars, whilst believed to be accurate are set out as a general outline only for guidance and do not constitute any part of an offer or contract. Intending purchasers should not rely on them as statements of representation of fact, but must satisfy themselves by inspection or otherwise as to their accuracy. No person in this firm's employment has the authority to make or give any representation or warranty in respect of the property.