

THE KENNETT

THREE BEDROOM END-TERRACED HOME



Individual plots may vary, please speak to the Sales Adviser



Intelligently designed over three floors, The Kennett is a good-sized end-terraced family home, ideal for flexible modern living. The open-plan kitchen on the ground floor incorporates a dining area opening out onto the rear garden. A lobby

separating the kitchen from the spacious bay-fronted lounge leads upstairs. Here are two double bedrooms, the family bathroom and access to the second floor, which is entirely occupied by a spacious main bedroom with en suite.



DAVID WILSON HOMES

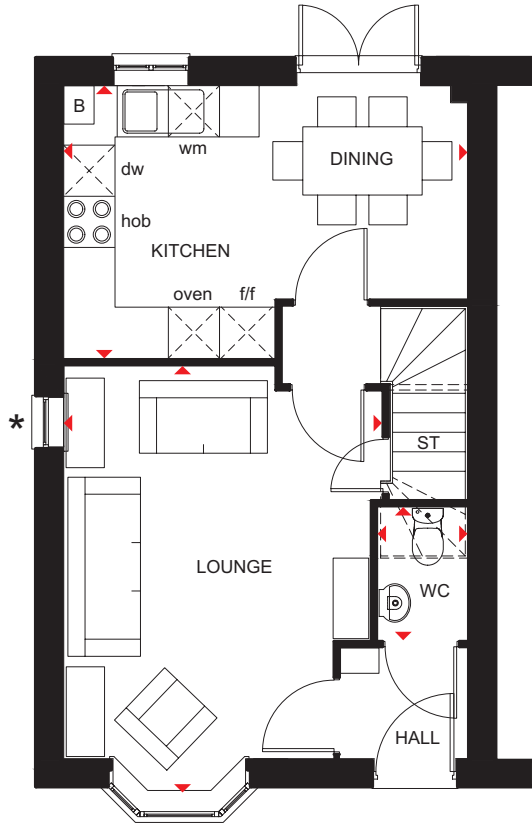
WHERE QUALITY LIVES

THE KENNETT

THREE BEDROOM END-TERRACED HOME

Key

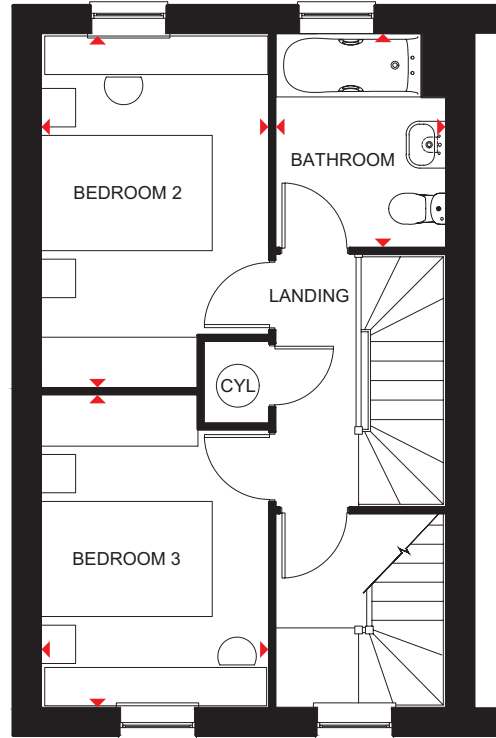
B	Boiler	wm	Washing machine space	RL	Rooflight
ST	Store	dw	Dishwasher space		
f/f	Fridge/freezer space	◀▶	Dimension location		



Ground Floor

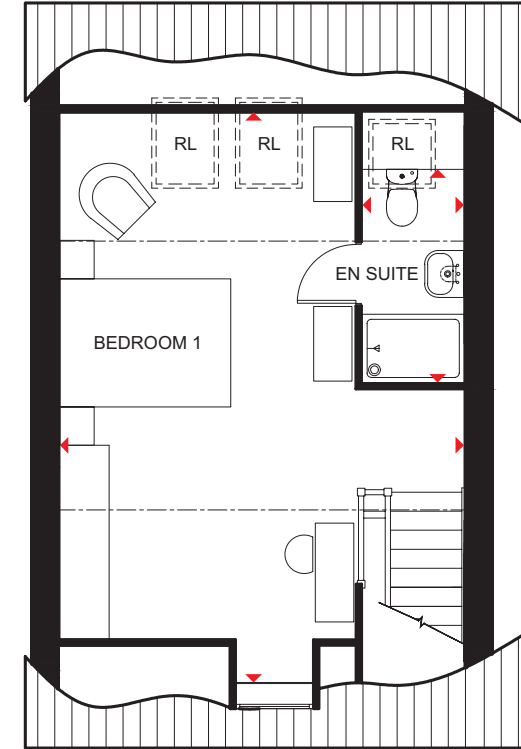
Lounge	5001 x 3729 mm	16'4" x 12'2"
Kitchen/Dining	4733 x 3197 mm	15'6" x 10'5"
WC	1561 x 1054 mm	5'1" x 3'5"

*Window may be omitted on certain plots. Speak to a Sales Adviser for details on individual plots.



First Floor

Bedroom 2	4116 x 2659 mm	13'6" x 8'8"
Bedroom 3	3658 x 2659 mm	12'0" x 8'8"
Bathroom	2498 x 1985 mm	8'2" x 6'6"



Second Floor

Bedroom 1	6681* x 4733 mm	21'11"* x 15'6"
En suite	1189* x 2497 mm	3'11"* x 8'2"

*Overall floor dimension includes lowered ceiling areas

We are on the New Homes Quality Code register of registered developers. "We" refers to the Barratt Developments PLC group brands including Barratt London, Barratt Homes and David Wilson Homes. All images used are for illustrative purposes. These and the dimensions given are illustrative for this house type and individual properties may differ. Please check with your Sales Adviser in respect of individual properties. We give maximum dimensions within each room which includes areas of fixtures and fittings including fitted furniture. These dimensions should not be used for carpet or flooring sizes, appliance spaces or items of furniture. All images, photographs and dimensions are not intended to be relied upon for, nor to form part of, any contract unless specifically incorporated in writing into the contract. BDW001919/OCT22

