



3 Kemps Eye Avenue, Belle Vue, Shrewsbury, SY3 8QN

3 bedroom semi-detached house—£325,000 Freehold

3 Kemps Eye Avenue, Belle Vue, Shrewsbury, SY3 7QN

Coopergreenpooks.co.uk

£325,000 Freehold—3 bedroom semi-detached house

sales@cgpooks.co.uk

Well situated in a lovely, quiet and private position within the popular Belle Vue area of town, this mature semi-detached house provides excellent accommodation for a family with scope for further improvement.

KEY FEATURES

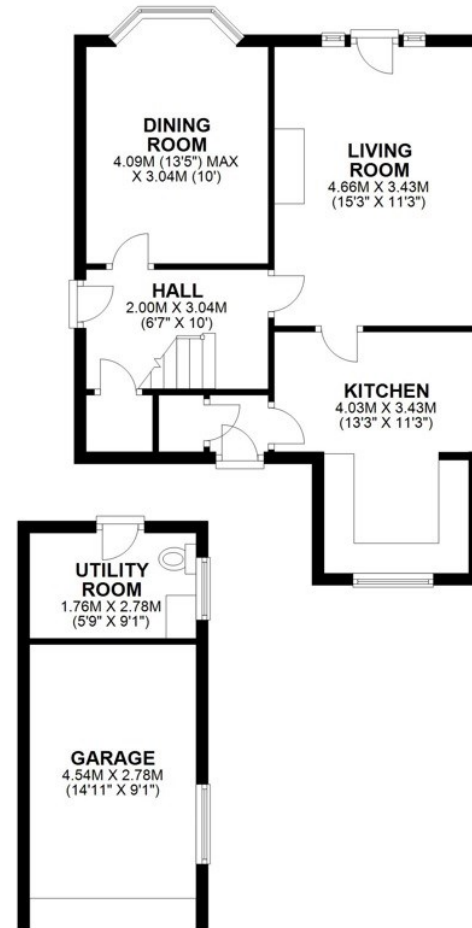
- Entrance halls to both the front and rear.
- Separate living and dining rooms, both with feature fireplaces. The dining room also has a bay window whilst the living room has a glazed door to garden.
- Kitchen/breakfast room with fitted units and window to rear.
- Staircase from hall to landing where there are 3 double bedrooms, a family bathroom and separate WC.
- Double glazed windows and gas fired central heating.
- Double gated access to a block paved driveway and garage, to the rear of which there is a utility room/workshop with WC.
- Very attractively landscaped and mature garden which is laid to lawn with paved areas and established beds.
- Located in a great position within the very popular Belle Vue area, a short walk from the excellent amenities of Coleham with its outstanding primary school, cafe, various pubs and many independent shops.
- Vacant with no onward chain.

Cooper Green Pooks
3 Barker Street
Shrewsbury
SY1 1QF

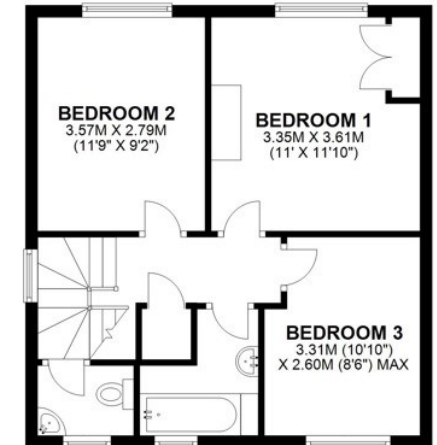
www.cgpooks.co.uk
sales@cgpooks.co.uk



GROUND FLOOR
APPROX. 69.7 SQ. METRES (749.9 SQ. FEET)



FIRST FLOOR
APPROX. 44.2 SQ. METRES (475.9 SQ. FEET)



TOTAL AREA: APPROX. 113.9 SQ. METRES (1225.8 SQ. FEET)

We accept no responsibility for any mistake or inaccuracy contained within the floorplan. The floorplan is provided as a guide only and should be taken as an illustration only. The measurements, contents and positioning are approximations only and provided as a guidance tool and not an exact replication of the property.
Plan produced using PlanUp.







3 Kemps Eye Avenue, Belle Vue, Shrewsbury, SY3 7QN

£325,000 Freehold—3 bedroom semi-detached house

sales@cgpooks.co.uk

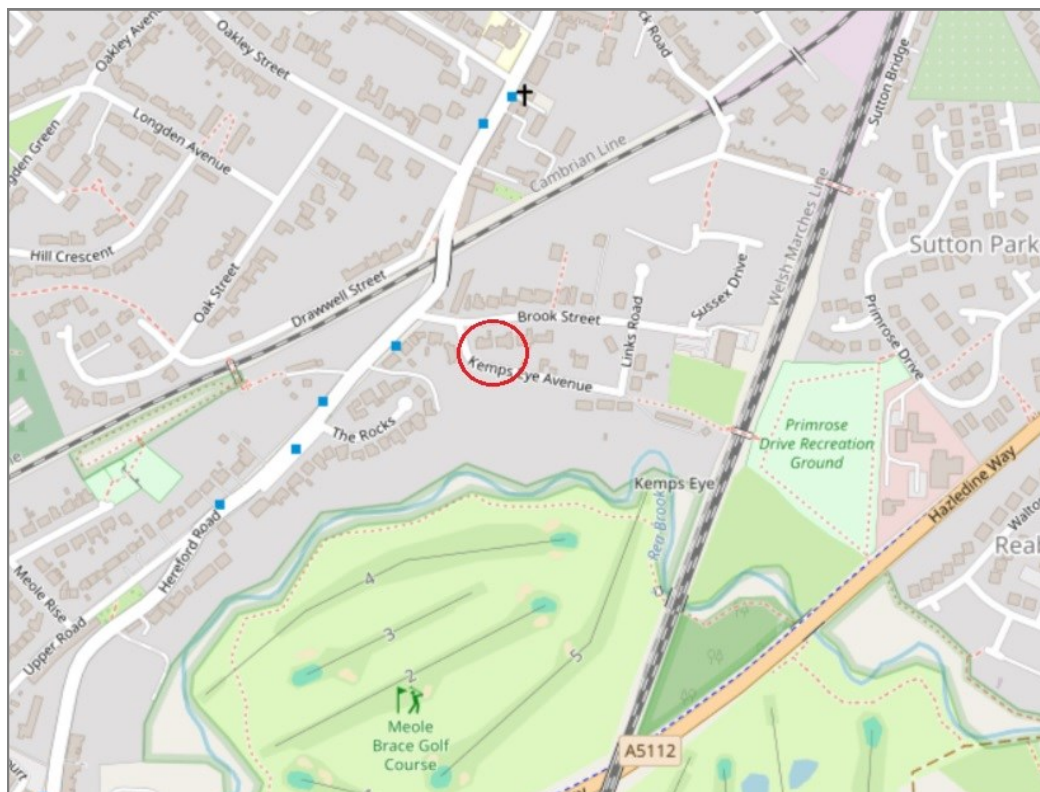
rightmove 

 OnTheMarket.com

 **RICS**
Regulated by RICS



BOUNDARIES NOT CONFIRMED



Tenure	Freehold
Local Authority	Shropshire Council
Council Tax	Band C
EPC Band	Band E
Services	All mains services are connected

 **Expert mortgage advice available**
3 Barker St, Shrewsbury SY1 1QF
Cooper Green Pooks
01743 276666



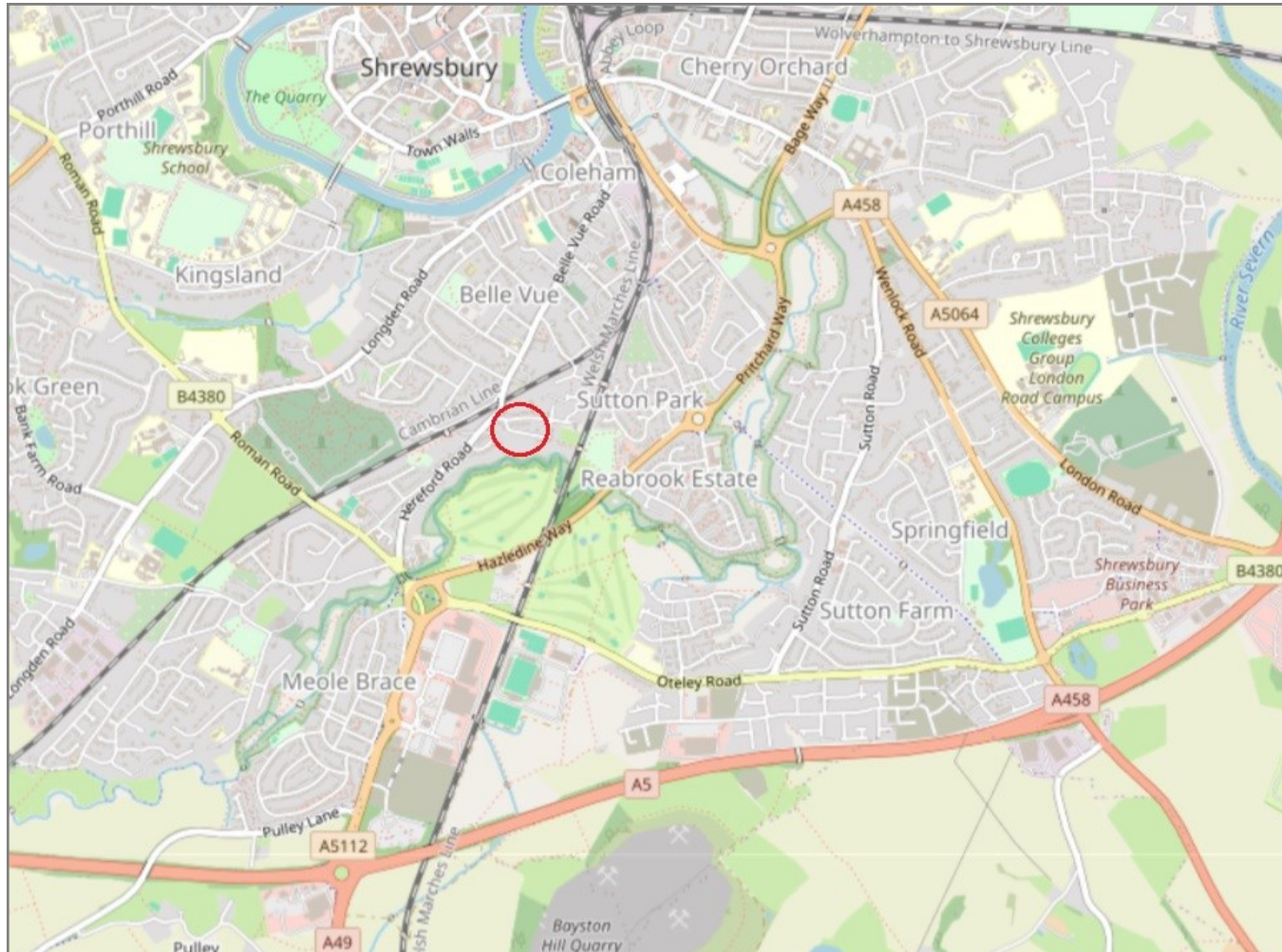
Your home may be repossessed if you do not keep up repayments on your mortgage.
There may be a fee for mortgage advice. The actual amount you pay will depend upon your circumstances. The fee is up to 1% but a typical fee is 0.3% of the amount borrowed.

3 Kemps Eye Avenue, Belle Vue, Shrewsbury, SY3 7QN

Coopergreenpooks.co.uk

£325,000 Freehold—3 bedroom semi-detached house

sales@cgpooks.co.uk



IMPORTANT NOTICE: Cooper Green Pooks for themselves and for the lessors or vendors of this property whose agents they are give notice that: 1 No appliances, services or service installations have been tested and no warranty as to suitability or serviceability is implied. Any prospective purchaser or lessee is advised to obtain verification from their surveyor or solicitor. 2. The particulars are set out as a general outline only for the guidance of the intended purchasers or lessees and do not constitute, nor constitute part of, an offer or contract. 3. All descriptions, reference to condition and necessary permissions for use and occupation and other details are given in good faith and are believed to be correct but any intending purchasers or lessees should not rely on them as statements or representation of fact but satisfy themselves by inspection or otherwise as to the correctness of each of them. 4. No person in the employment of Cooper Green Pooks has any authority to make or give any representation or warranty whatsoever in relation to this property. 5. All rentals and prices are quoted exclusive of Stamp Duty, legal and surveyors fees and any other associated purchasers or lessees costs. 6. Floor plans are indicative only and should not be relied on. 7. The plan showing the boundary of the property is indicative only and has not been checked against the legal title so should not be relied on. 8. All dimensions, floor areas and site areas are only approximate and should not be relied on. Dimensions are generally maximum room dimension.