



234 Crowmere Road, Shrewsbury, SY2 5LE

3 bedroom semi-detached house—£230,000 Freehold

234 Crowmere Road, Shrewsbury, SY2 5LE

£230,000 Freehold—3 bedroom semi-detached house

sales@cgpooks.co.uk

This immaculately presented semi-detached house offers well-proportioned accommodation, while benefitting from a landscaped rear garden and private driveway.

KEY FEATURES

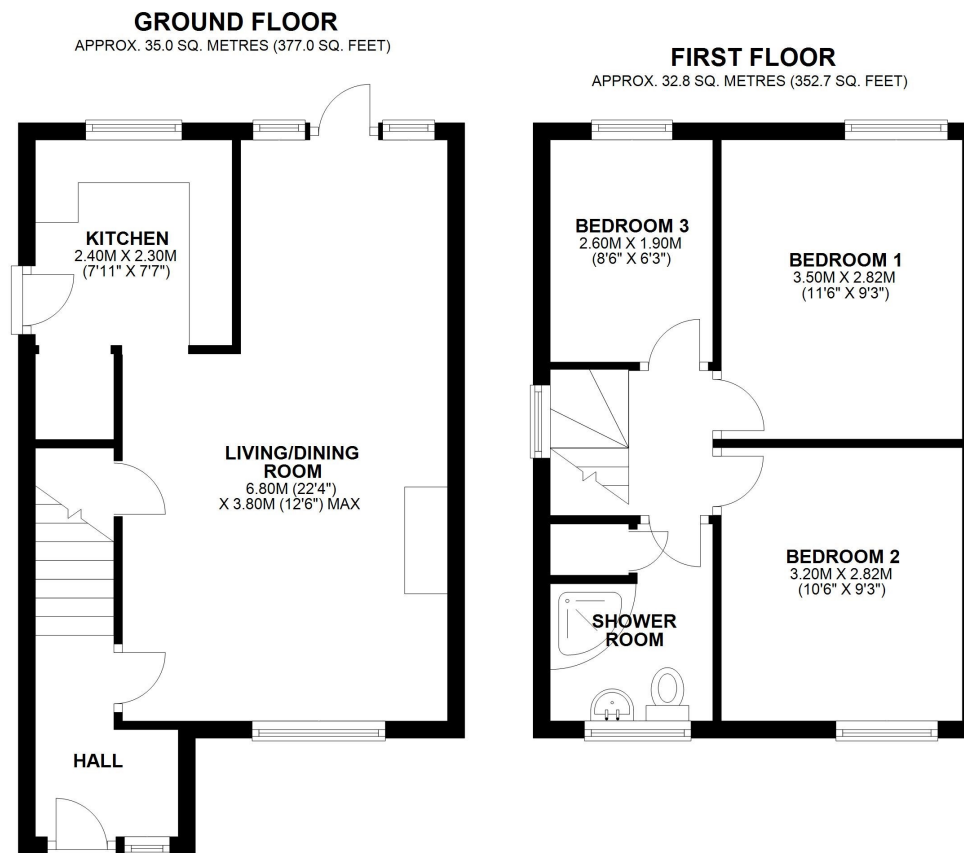
- Lovely open plan living/dining room with feature fireplace and glazed door opening onto the rear garden
- Fitted kitchen with useful under stairs store and access to side
- Two double bedrooms, a further single bedroom and family shower room on the first floor
- uPVC double glazed windows and gas fired central heating
- Attractively landscaped rear garden, laid to lawn with large paved terrace, timber store and gated access to side
- Driveway to front providing parking with adjoining lawned garden
- A very quiet and convenient location, just a short distance from an excellent range of amenities, Belvidere secondary school and a choice of primary schools, as well as being approximately two miles from the town centre with frequent bus services
- No upward chain

Cooper Green Pooks
3 Barker Street
Shrewsbury
SY1 1QF

www.cgpooks.co.uk
sales@cgpooks.co.uk



Coopergreenpooks.co.uk



TOTAL AREA: APPROX. 67.8 SQ. METRES (729.6 SQ. FEET)

We accept no responsibility for any mistake or inaccuracy contained within the floorplan. The floorplan is provided as a guide only and should be taken as an illustration only. The measurements, contents and positioning are approximations only and provided as a guidance tool and not an exact replication of the property.
Plan produced using PlanUp.



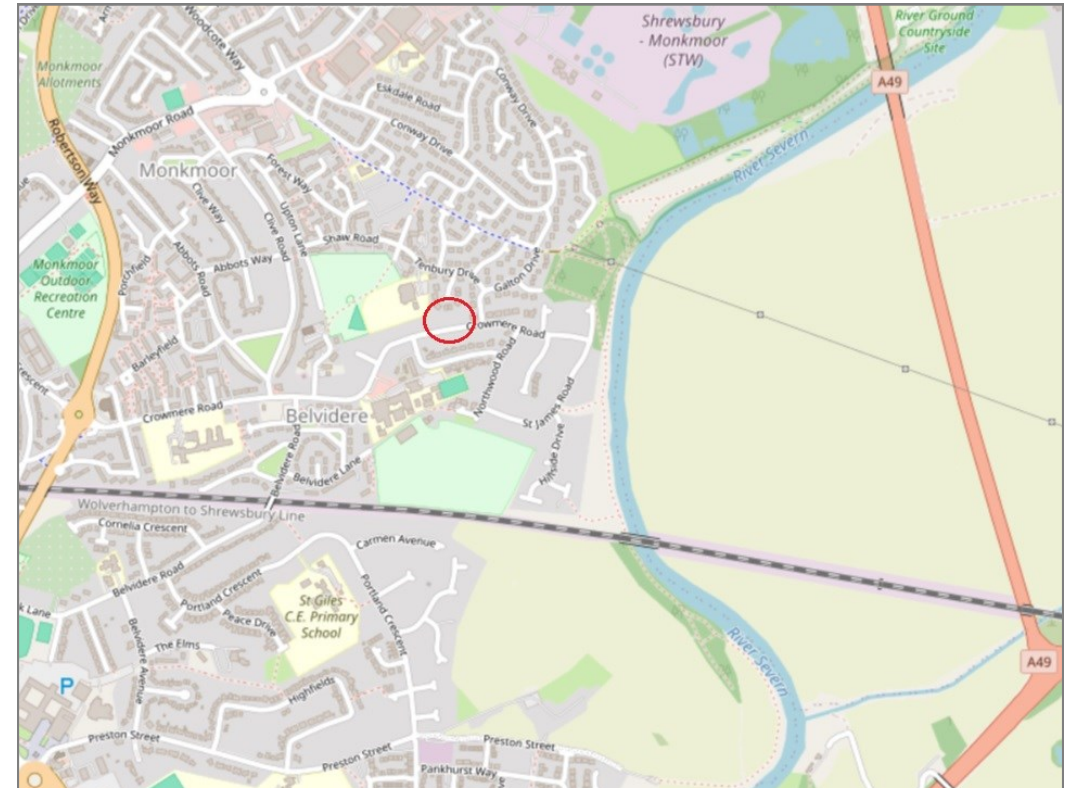
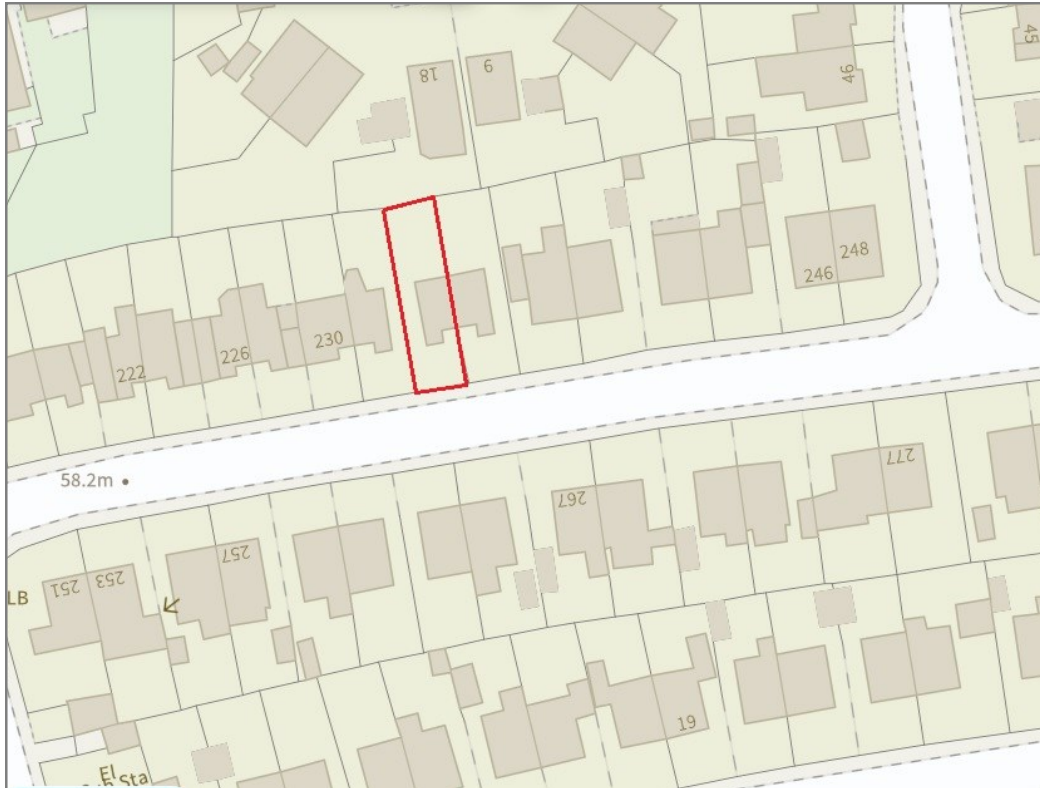




234 Crowmere Road, Shrewsbury, SY2 5LE

£230,000 Freehold—3 bedroom semi-detached house

sales@cgpooks.co.uk



BOUNDARIES NOT CONFIRMED

Tenure	Freehold
Local Authority	Shropshire Council
Council Tax	Band C
EPC Band	TBC
Services	All mains services are connected

Expert mortgage advice available
3 Barker St, Shrewsbury SY1 1QF
Cooper Green Pooks
01743 276666



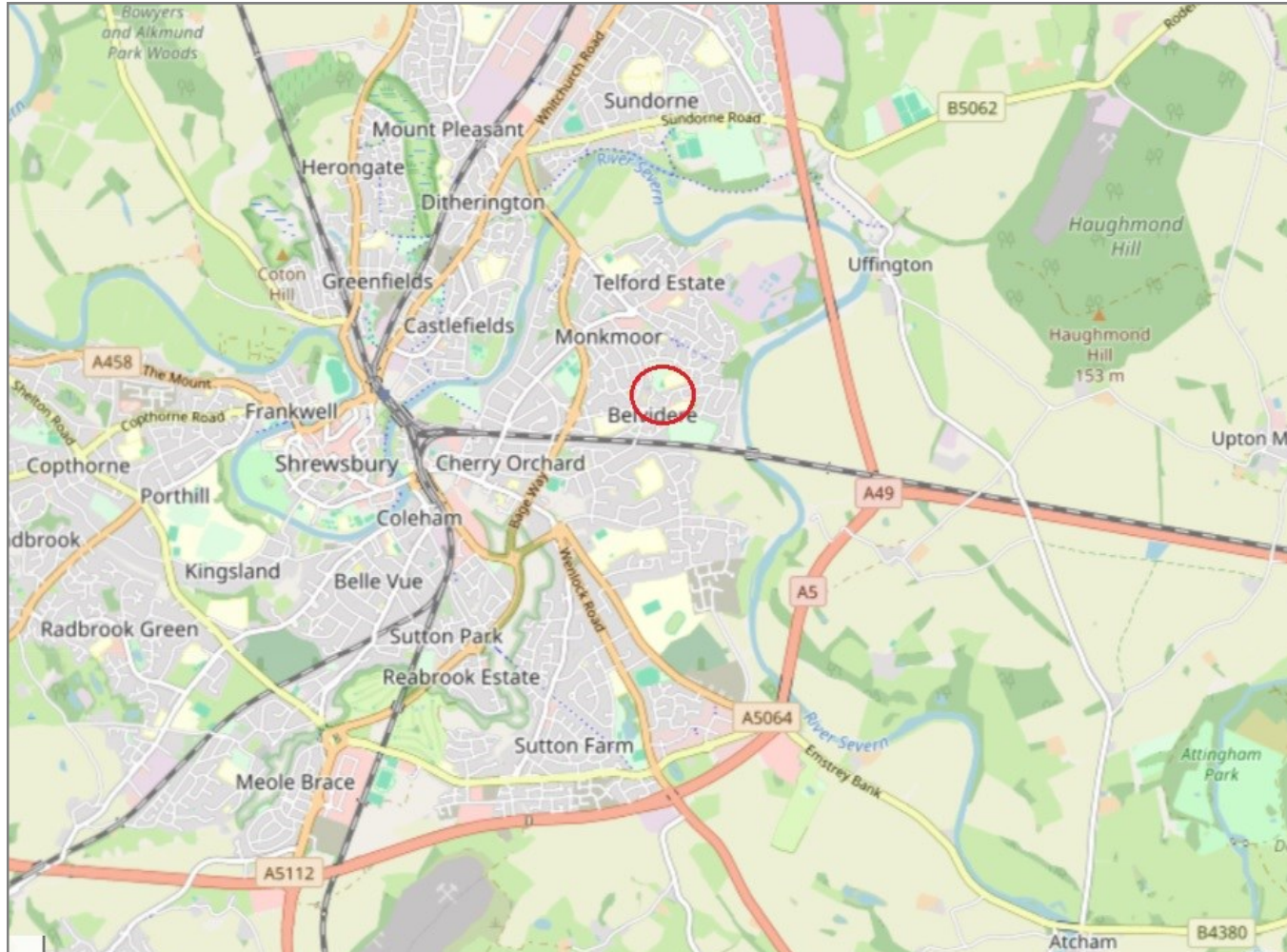
Your home may be repossessed if you do not keep up repayments on your mortgage.
There may be a fee for mortgage advice. The actual amount you pay will depend upon your circumstances. The fee is up to 1% but a typical fee is 0.3% of the amount borrowed.

234 Crowmere Road, Shrewsbury, SY2 5LE

Coopergreenpooks.co.uk

£230,000 Freehold—3 bedroom semi-detached house

sales@cgpooks.co.uk



IMPORTANT NOTICE: Cooper Green Pooks for themselves and for the lessors or vendors of this property whose agents they are give notice that: 1 No appliances, services or service installations have been tested and no warranty as to suitability or serviceability is implied. Any prospective purchaser or lessee is advised to obtain verification from their surveyor or solicitor. 2. The particulars are set out as a general outline only for the guidance of the intended purchasers or lessees and do not constitute, nor constitute part of, an offer or contract. 3. All descriptions, reference to condition and necessary permissions for use and occupation and other details are given in good faith and are believed to be correct but any intending purchasers or lessees should not rely on them as statements or representation of fact but satisfy themselves by inspection or otherwise as to the correctness of each of them. 4. No person in the employment of Cooper Green Pooks has any authority to make or give any representation or warranty whatsoever in relation to this property. 5. All rentals and prices are quoted exclusive of Stamp Duty, legal and surveyors fees and any other associated purchasers or lessees costs. 6. Floor plans are indicative only and should not be relied on. 7. The plan showing the boundary of the property is indicative only and has not been checked against the legal title so should not be relied on. 8. All dimensions, floor areas and site areas are only approximate and should not be relied on. Dimensions are generally maximum room dimension.