



5 Liddle Close, Weir Hill, Shrewsbury, SY2 5WL

5 bedroom detached house — £400,000 Freehold

5 Liddle Close, Weir Hill, Shrewsbury, SY2 5WL

Coopergreenpooks.co.uk

£400,000 Freehold — 5 bedroom detached house

sales@cgpooks.co.uk

This recently built 5 bedroom detached family home provides good sized accommodation in a quiet and private cul-de-sac setting, with an open outlook to the front.

KEY FEATURES

- Built within the last 3 years and providing excellent accommodation with uPVC double glazed windows and gas fired central heating
- Covered entrance area to hall with built in storage
- Living room with window to front
- Open plan kitchen/dining room with window and glazed double doors to rear garden. There is also a range of fitted units and some integrated appliances
- Adjoining the kitchen is a separate utility room which also provides access to the rear and a cloakroom
- Staircase from hall to landing where there are 5 bedrooms and a family bathroom. The main bedroom also has an en-suite shower room
- Lawed front garden and a driveway which provides parking, as well as access to an integral single garage
- Side access to a lawned rear garden with covered gravelled area and pathway
- Great location in a quiet cul-de-sac on the fringe of town, within a popular modern development next to open countryside, whilst also being close to schools and a fantastic selection of local amenities, such as good pubs/restaurants, butchers/delicatessen and supermarket. Shrewsbury town centre is also just 1.5 miles from the property.

Cooper Green Pooks
3 Barker Street
Shrewsbury
SY1 1QF

www.cgpooks.co.uk

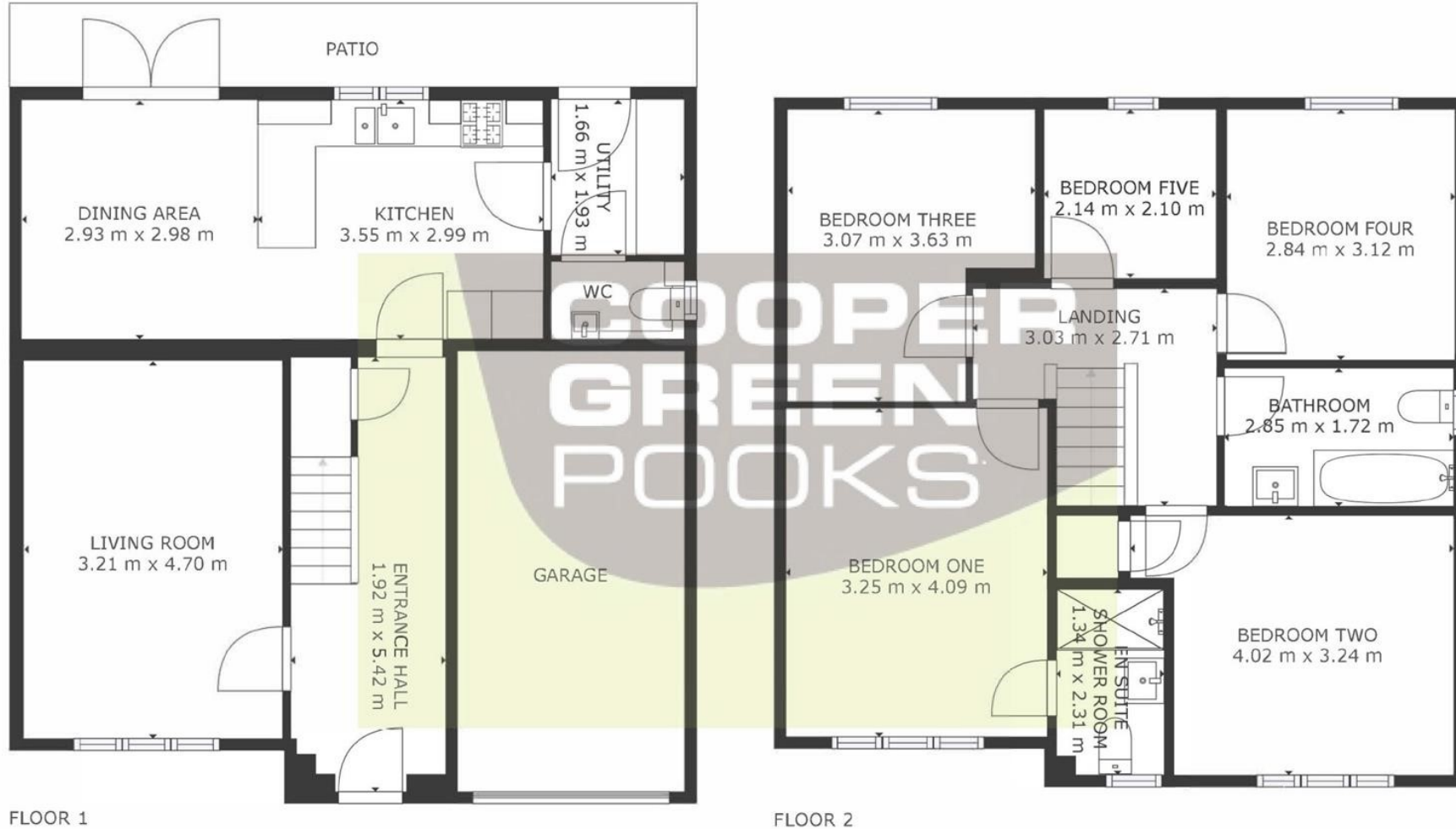


5 Liddle Close, Weir Hill, Shrewsbury, SY2 5WL

Coopergreenpooks.co.uk

£400,000 Freehold — 5 bedroom detached house

sales@cgpooks.co.uk



GROSS INTERNAL AREA
FLOOR 1: 52 m², FLOOR 2: 67 m²
TOTAL: 119 m²
SIZES AND DIMENSIONS ARE APPROXIMATE, ACTUAL MAY VARY.







5 Liddle Close, Weir Hill, Shrewsbury, SY2 5WL

Coopergreenpooks.co.uk

£400,000 Freehold — 5 bedroom detached house

sales@cgpooks.co.uk



Cooper Green Pooks
3 Barker Street
Shrewsbury
SY1 1QF

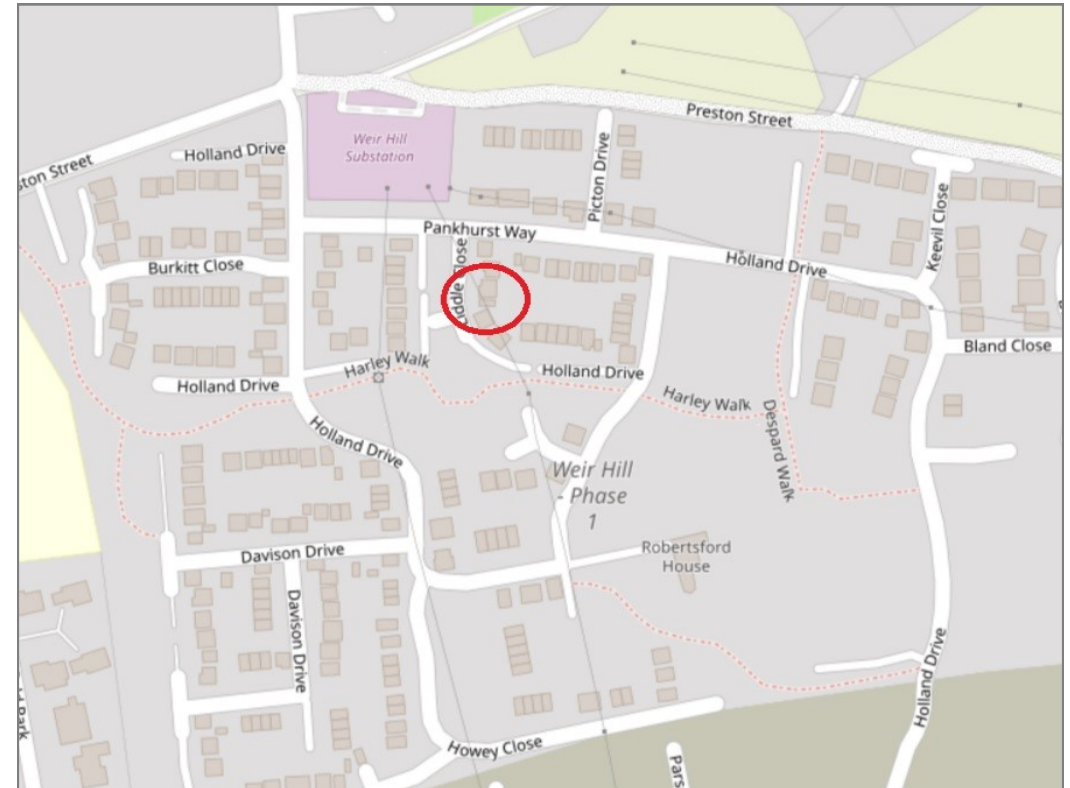
www.cgpooks.co.uk
sales@cgpooks.co.uk



5 Liddle Close, Weir Hill, Shrewsbury, SY2 5WL

£400,000 Freehold — 5 bedroom detached house

sales@cgpooks.co.uk



BOUNDARIES NOT CONFIRMED

Tenure	Freehold
Local Authority	Shropshire Council
Council Tax	Band E
EPC Band	Band B
Services	All mains services are connected

Expert mortgage advice available
3 Barker St, Shrewsbury SY1 1QF
Cooper Green Pooks
01743 276666



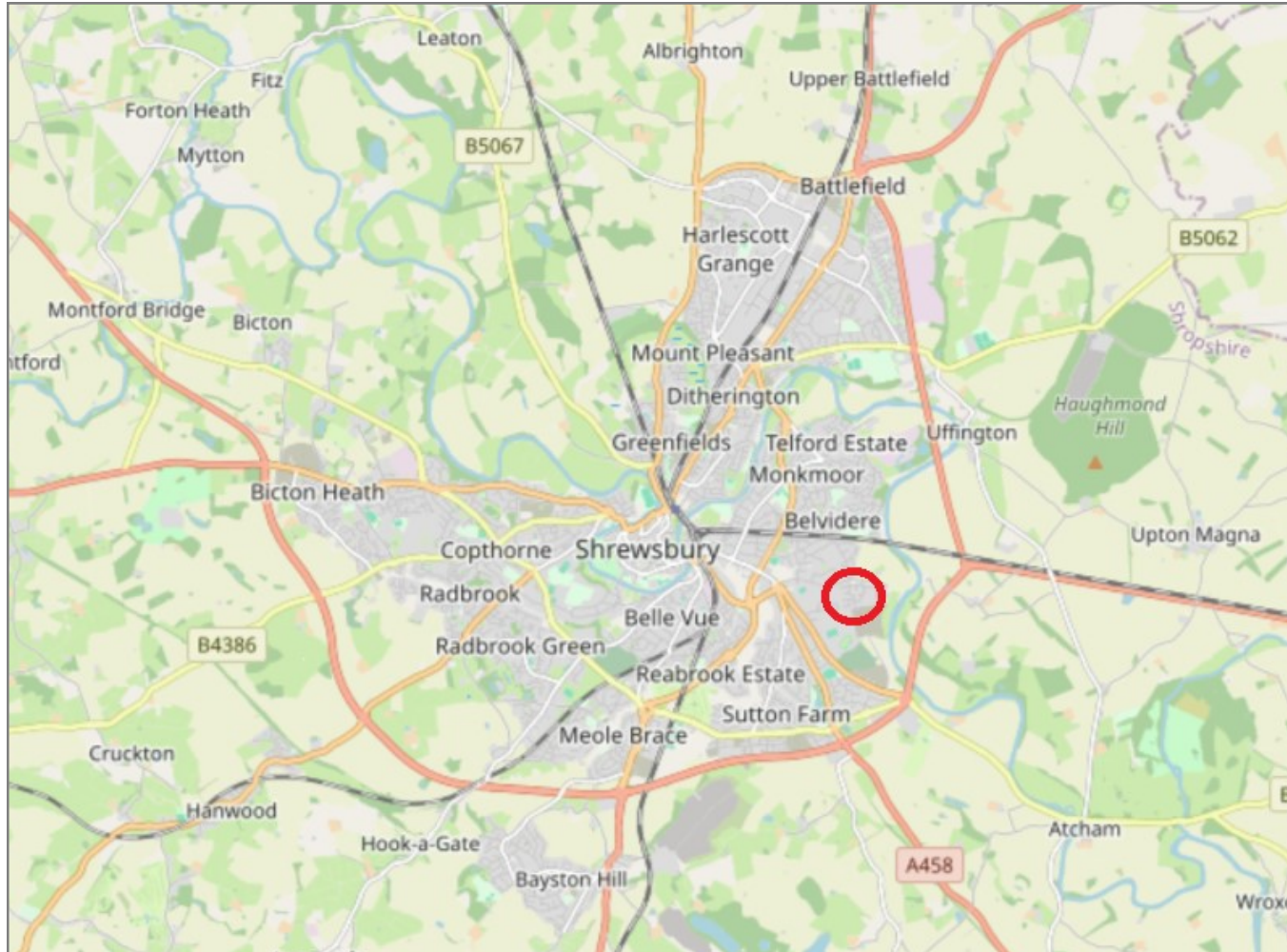
Your home may be repossessed if you do not keep up repayments on your mortgage.
There may be a fee for mortgage advice. The actual amount you pay will depend upon your circumstances. The fee is up to 1% but a typical fee is 0.3% of the amount borrowed.

5 Liddle Close, Weir Hill, Shrewsbury, SY2 5WL

Coopergreenpooks.co.uk

£400,000 Freehold — 5 bedroom detached house

sales@cgpooks.co.uk



IMPORTANT NOTICE: Cooper Green Pooks for themselves and for the lessors or vendors of this property whose agents they are give notice that: 1 No appliances, services or service installations have been tested and no warranty as to suitability or serviceability is implied. Any prospective purchaser or lessee is advised to obtain verification from their surveyor or solicitor. 2. The particulars are set out as a general outline only for the guidance of the intended purchasers or lessees and do not constitute, nor constitute part of, an offer or contract. 3. All descriptions, reference to condition and necessary permissions for use and occupation and other details are given in good faith and are believed to be correct but any intending purchasers or lessees should not rely on them as statements or representation of fact but satisfy themselves by inspection or otherwise as to the correctness of each of them. 4. No person in the employment of Cooper Green Pooks has any authority to make or give any representation or warranty whatsoever in relation to this property. 5. All rentals and prices are quoted exclusive of Stamp Duty, legal and surveyors fees and any other associated purchasers or lessees costs. 6. Floor plans are indicative only and should not be relied on. 7. The plan showing the boundary of the property is indicative only and has not been checked against the legal title so should not be relied on. 8. All dimensions, floor areas and site areas are only approximate and should not be relied on. Dimensions are generally maximum room dimension.