



12 Caradoc Crescent, Belvidere, Shrewsbury, SY2 5RG

3 bedroom semi-detached house — £195,000 Freehold

12 Caradoc Crescent, Belvidere, Shrewsbury, SY2 5RG

Coopergreenpooks.co.uk

£195,000 Freehold — 3 bedroom semi-detached house

sales@cgpooks.co.uk

Occupying a fantastic plot within a quiet cul-de-sac, this 3 bedroom semi-detached house offers spacious and practical accommodation, while benefitting from a large private rear garden, driveway and garage.

KEY FEATURES

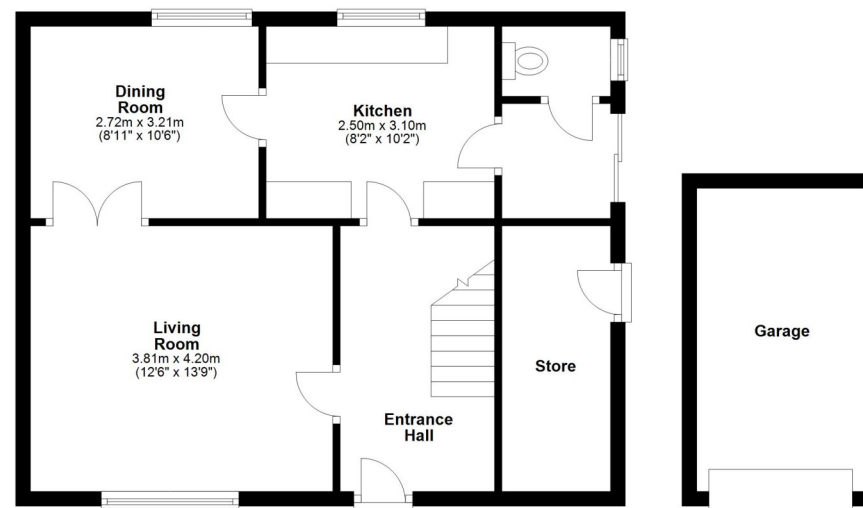
- Good sized entrance hall with staircase to landing
- Living room with views to front and double doors opening to the separate dining room
- Modern fitted kitchen with a range of floor and wall units, and space for appliances
- Rear hall connecting to both the cloakroom and garden
- Two double bedrooms with built in wardrobes
- A further generous single bedroom and family bathroom
- uPVC double glazed windows and gas fired central heating
- Impressive private garden, extending to the rear and side of the property, mainly laid to lawn with a raised decked terrace and very useful external store
- Driveway to front providing plenty of parking and access to the detached single garage
- The property is tucked away in the corner of a quiet cul-de-sac with a lovely outlook to the front, while being on the doorstep of Belvidere Secondary school and a short walk from a choice of primary schools, as well as being close to an excellent range of amenities and less than two miles from the town centre

Cooper Green Pooks
3 Barker Street
Shrewsbury
SY1 1QF

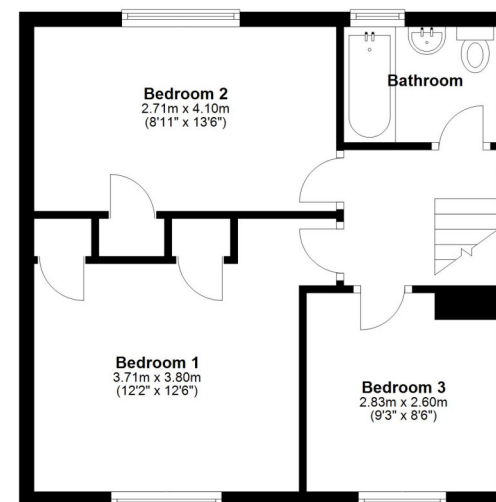
www.cgpooks.co.uk
sales@cgpooks.co.uk



Ground Floor
Approx. 57.5 sq. metres (618.8 sq. feet)



First Floor
Approx. 39.6 sq. metres (425.9 sq. feet)



Total area: approx. 97.1 sq. metres (1044.7 sq. feet)

We accept no responsibility for any mistake or inaccuracy contained within the floorplan. The floorplan is provided as a guide only and should be taken as an illustration only. The measurements, contents and positioning are approximations only and provided as a guidance tool and not an exact replication of the property.
Plan produced using PlanUp.









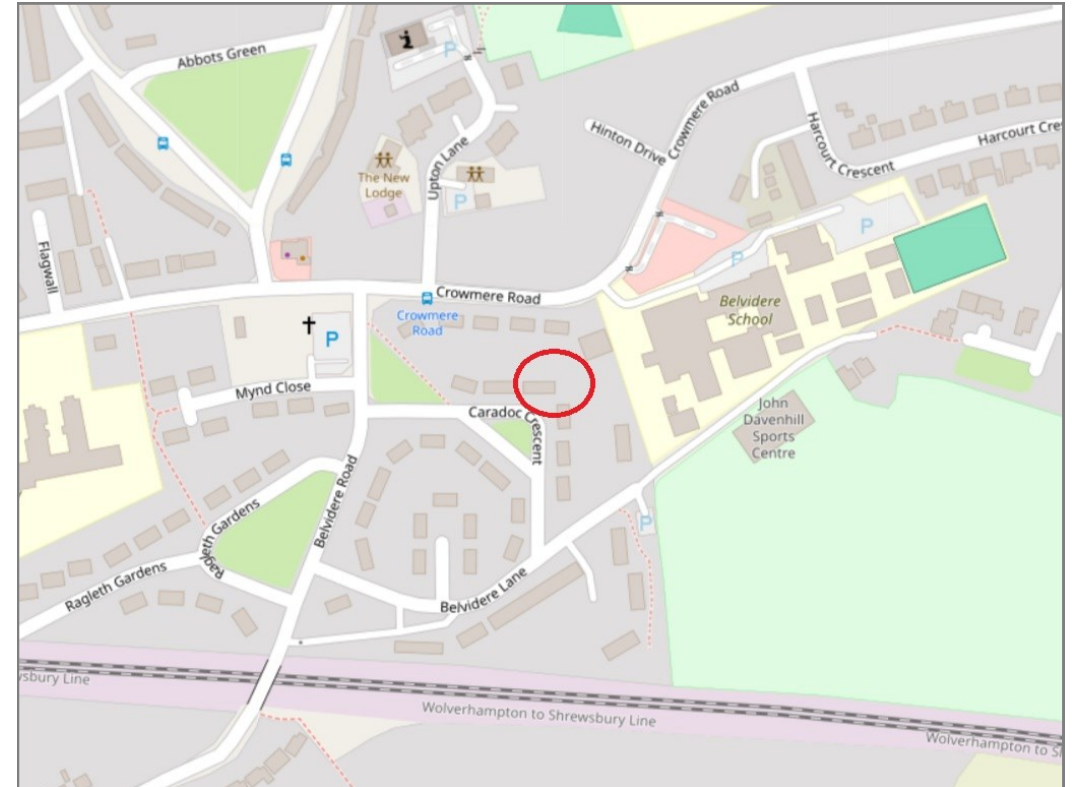
12 Caradoc Crescent, Belvidere, Shrewsbury, SY2 5RG

£195,000 Freehold — 3 bedroom semi-detached house

sales@cgpooks.co.uk



BOUNDARIES NOT CONFIRMED



Tenure	Freehold
Local Authority	Shropshire Council
Council Tax	Band A
EPC Band	TBC
Services	All mains services are connected

Expert mortgage advice available
3 Barker St, Shrewsbury SY1 1QF
Cooper Green Pooks
01743 276666



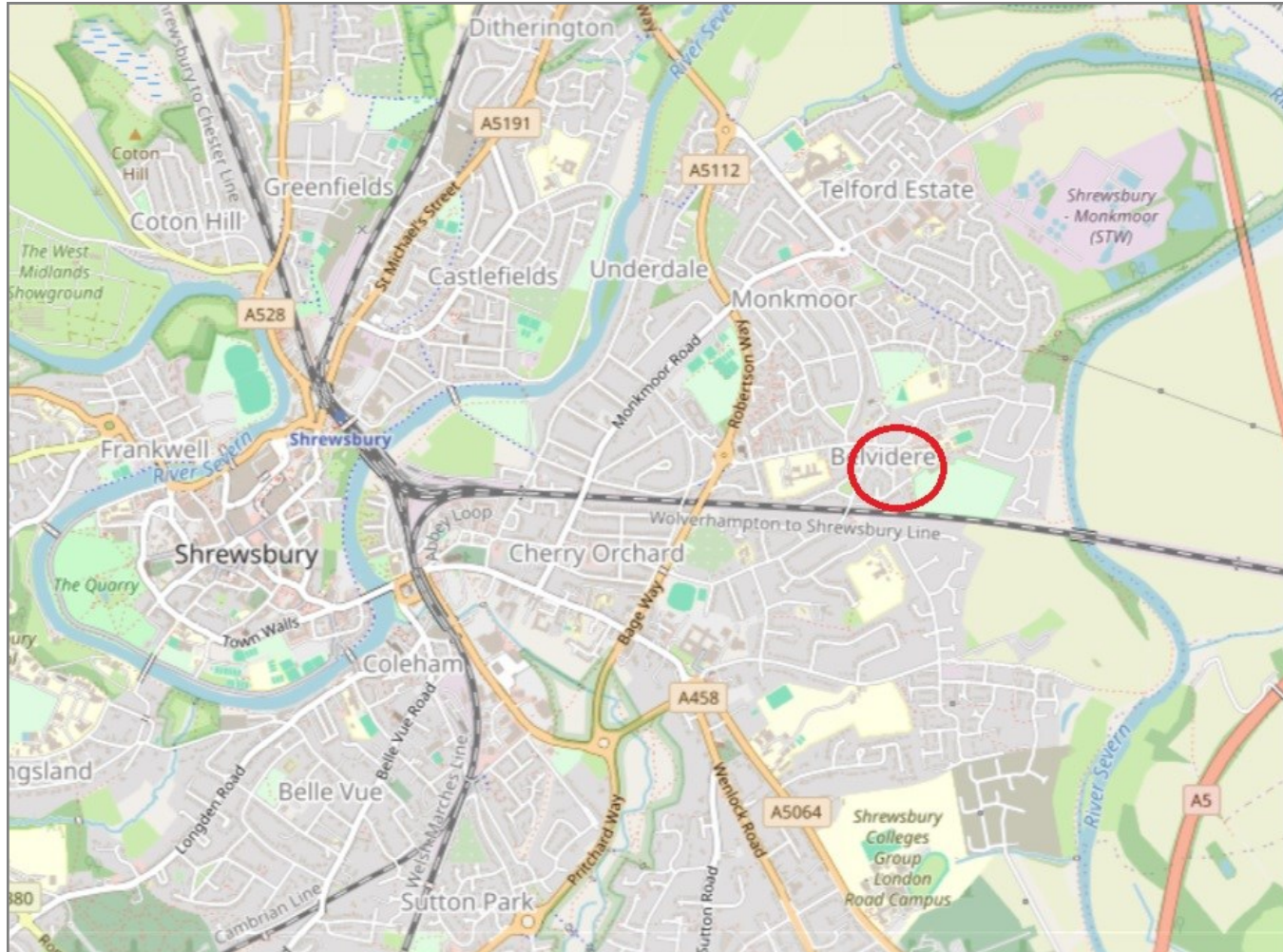
Your home may be repossessed if you do not keep up repayments on your mortgage.
There may be a fee for mortgage advice. The actual amount you pay will depend upon your circumstances. The fee is up to 1% but a typical fee is 0.3% of the amount borrowed.

12 Caradoc Crescent, Belvidere, Shrewsbury, SY2 5RG

Coopergreenpooks.co.uk

£195,000 Freehold — 3 bedroom semi-detached house

sales@cgpooks.co.uk



IMPORTANT NOTICE: Cooper Green Pooks for themselves and for the lessors or vendors of this property whose agents they are give notice that: 1 No appliances, services or service installations have been tested and no warranty as to suitability or serviceability is implied. Any prospective purchaser or lessee is advised to obtain verification from their surveyor or solicitor. 2. The particulars are set out as a general outline only for the guidance of the intended purchasers or lessees and do not constitute, nor constitute part of, an offer or contract. 3. All descriptions, reference to condition and necessary permissions for use and occupation and other details are given in good faith and are believed to be correct but any intending purchasers or lessees should not rely on them as statements or representation of fact but satisfy themselves by inspection or otherwise as to the correctness of each of them. 4. No person in the employment of Cooper Green Pooks has any authority to make or give any representation or warranty whatsoever in relation to this property. 5. All rentals and prices are quoted exclusive of Stamp Duty, legal and surveyors fees and any other associated purchasers or lessees costs. 6. Floor plans are indicative only and should not be relied on. 7. The plan showing the boundary of the property is indicative only and has not been checked against the legal title so should not be relied on. 8. All dimensions, floor areas and site areas are only approximate and should not be relied on. Dimensions are generally maximum room dimension.