



**26 Longner Street, Mountfields, Shrewsbury, SY3 8RF**

2 bedroom terraced house—£180,000 Freehold

# 26 Longner Street, Mountfields, Shrewsbury, SY3 8RF

Coopergreenpooks.co.uk

£180,000 Freehold — 2 bedroom terraced house

sales@cgpooks.co.uk

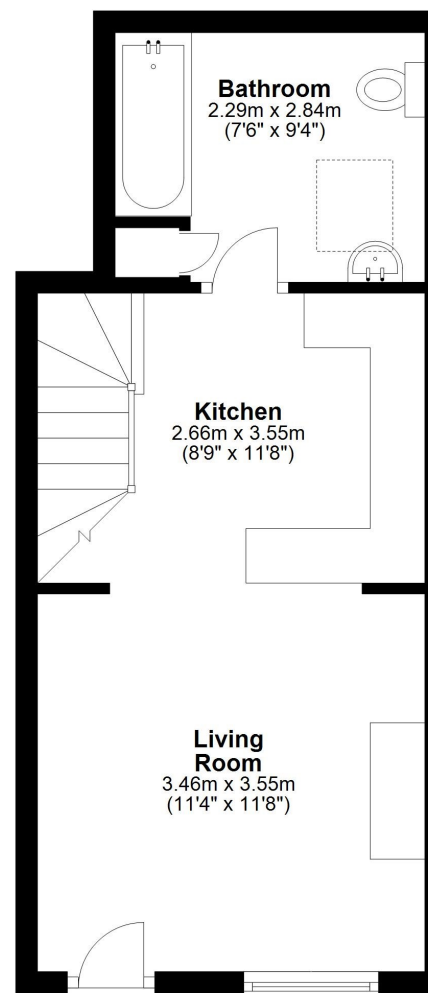
This very attractive terraced house of character has been improved and updated over the years to provide well-designed and practical accommodation, while occupying a fantastic position within a sought after residential area, just a short walk from the town centre.

## KEY FEATURES

- Living room with feature fireplace and wood boarded flooring, which continues into the kitchen
- A range of fitted units to the kitchen/dining room, complete with integrated appliances and breakfast bar
- Large ground floor bathroom with shower and velux roof light
- Two generous bedrooms on the first floor
- Double glazed sash windows and gas fired central heating
- A superb location, just a stones throw from the Quarry Park, Frankwell's excellent amenities, and the heart of the town centre
- Photos used were taken prior to the current tenancy
- Sold with no upward chain

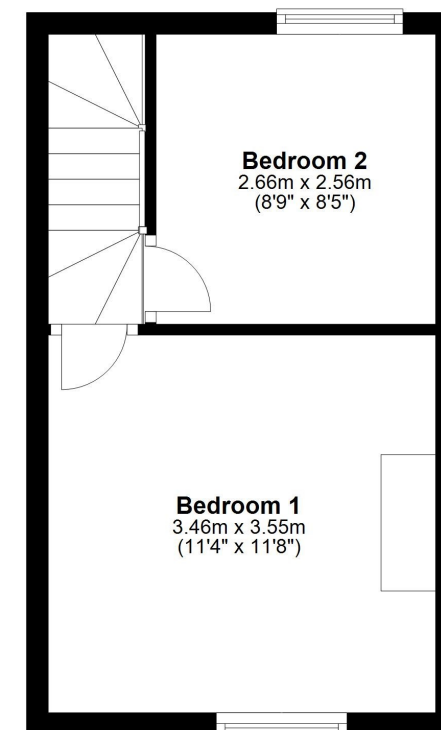
## Ground Floor

Approx. 28.8 sq. metres (310.4 sq. feet)



## First Floor

Approx. 22.1 sq. metres (237.5 sq. feet)



Total area: approx. 50.9 sq. metres (547.8 sq. feet)

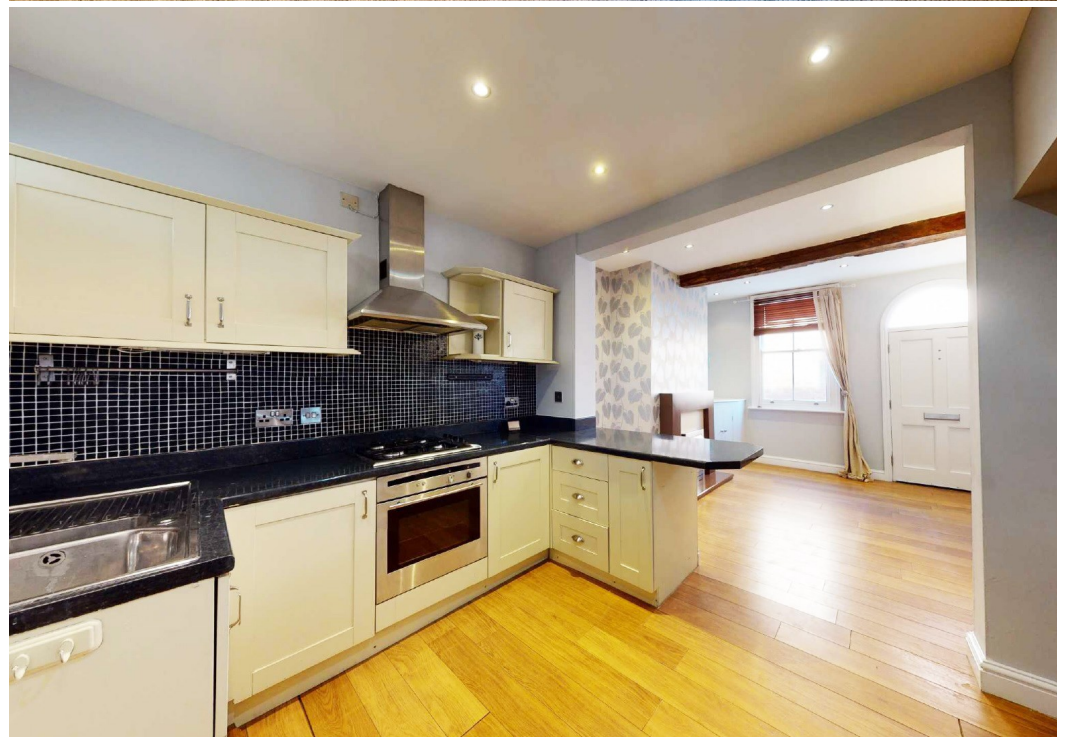
We accept no responsibility for any mistake or inaccuracy contained within the floorplan. The floorplan is provided as a guide only and should be taken as an illustration only. The measurements, contents and positioning are approximations only and provided as a guidance tool and not an exact replication of the property.  
Plan produced using PlanUp.

Cooper Green Pooks  
3 Barker Street  
Shrewsbury  
SY1 1QF



www.cgpooks.co.uk  
sales@cgpooks.co.uk



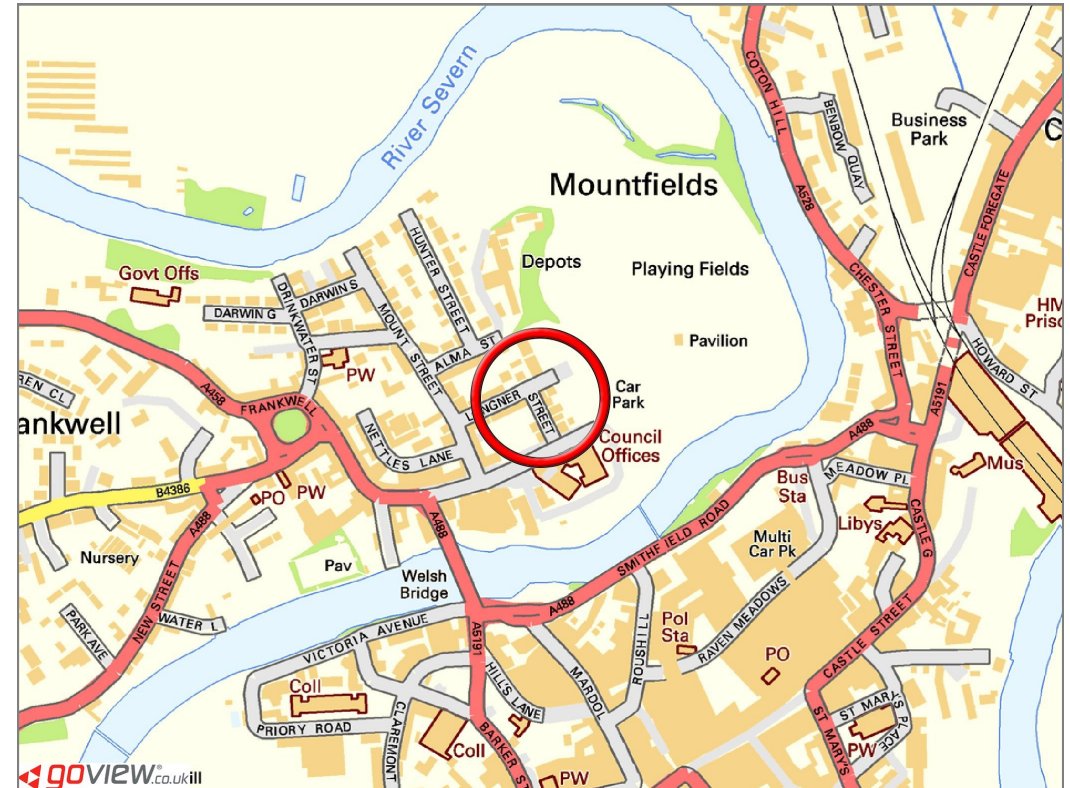




# 26 Longner Street, Mountfields, Shrewsbury, SY3 8RF

£180,000 Freehold — 2 bedroom terraced house

sales@cgpooks.co.uk



BOUNDARIES NOT CONFIRMED

Tenure	Freehold
Local Authority	Shropshire Council
Council Tax	Band A
EPC Band	Band E
Services	All mains services are connected

**Expert mortgage advice available**  
3 Barker St, Shrewsbury SY1 1QF  
**Cooper Green Pooks**  
**01743 276666**



Your home may be repossessed if you do not keep up repayments on your mortgage.  
There may be a fee for mortgage advice. The actual amount you pay will depend upon your circumstances. The fee is up to 1% but a typical fee is 0.3% of the amount borrowed.

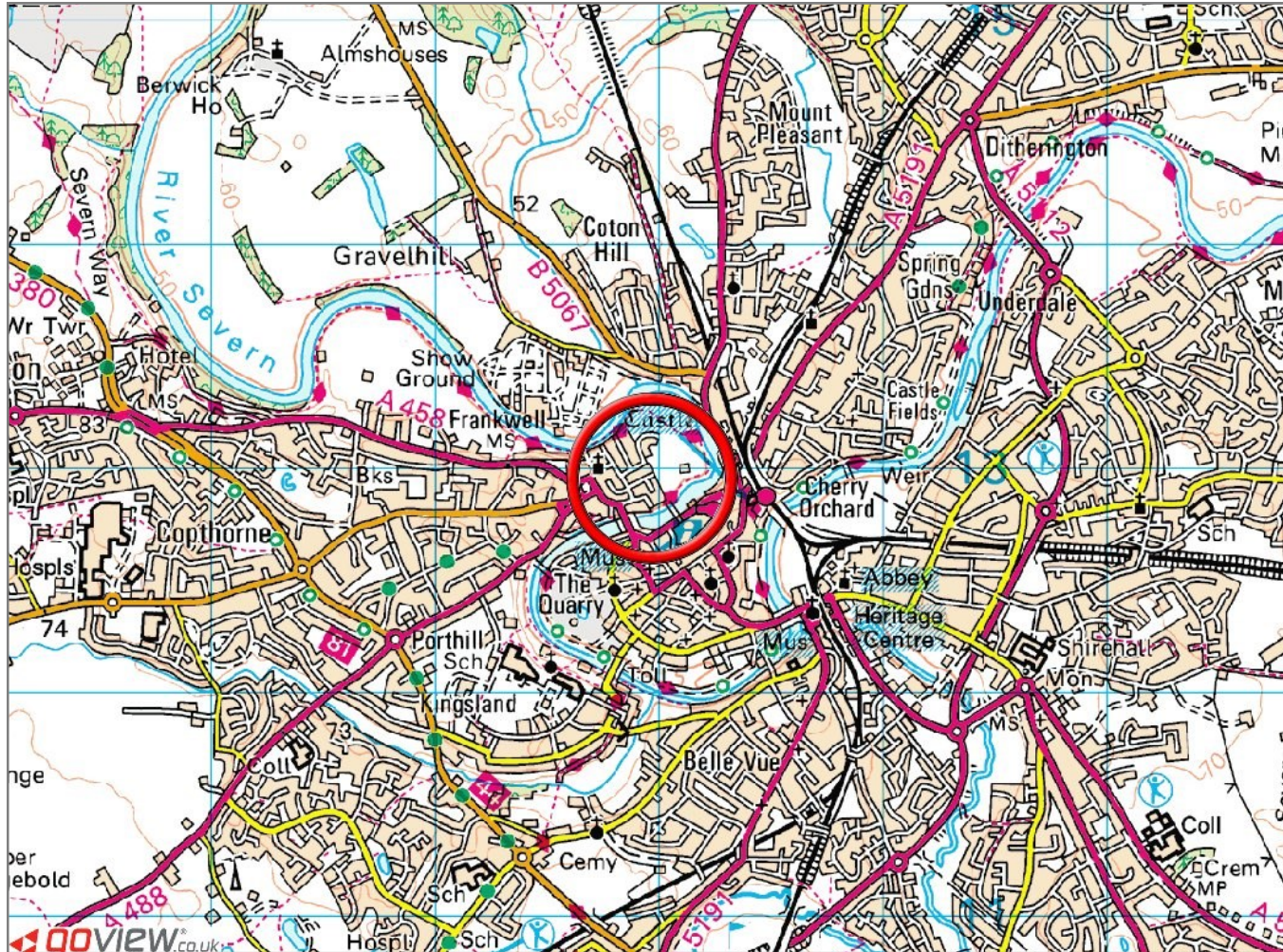


# 26 Longner Street, Mountfields, Shrewsbury, SY3 8RF

Coopergreenpooks.co.uk

£180,000 Freehold — 2 bedroom terraced house

sales@cgpooks.co.uk



**IMPORTANT NOTICE:** Cooper Green Pooks for themselves and for the lessors or vendors of this property whose agents they are give notice that: 1 No appliances, services or service installations have been tested and no warranty as to suitability or serviceability is implied. Any prospective purchaser or lessee is advised to obtain verification from their surveyor or solicitor. 2. The particulars are set out as a general outline only for the guidance of the intended purchasers or lessees and do not constitute, nor constitute part of, an offer or contract. 3. All descriptions, reference to condition and necessary permissions for use and occupation and other details are given in good faith and are believed to be correct but any intending purchasers or lessees should not rely on them as statements or representation of fact but satisfy themselves by inspection or otherwise as to the correctness of each of them. 4. No person in the employment of Cooper Green Pooks has any authority to make or give any representation or warranty whatsoever in relation to this property. 5. All rentals and prices are quoted exclusive of Stamp Duty, legal and surveyors fees and any other associated purchasers or lessees costs. 6. Floor plans are indicative only and should not be relied on. 7. The plan showing the boundary of the property is indicative only and has not been checked against the legal title so should not be relied on. 8. All dimensions, floor areas and site areas are only approximate and should not be relied on. Dimensions are generally maximum room dimension.