



42 Greenfields Gardens, Shrewsbury, SY1 2RN

2 bedroom apartment — £165,000 Leasehold

42 Greenfields Gardens, Shrewsbury, SY1 2RN

Coopergreenpooks.co.uk

£165,000 Leasehold—2 bedroom apartment

sales@cgpooks.co.uk

Occupying an elevated position with a lovely outlook towards Shrewsbury Castle, this beautifully presented and well-designed apartment offers spacious and practical accommodation throughout, while being conveniently located, just a 10 minute walk from the train station and heart of the town centre.

KEY FEATURES

- Neatly kept communal entrance and staircase to the third floor
- Good sized private inner hallway with useful storage
- Lovely south facing open plan living/dining room with Juliette balcony offering an open outlook and views towards the town centre
- Fitted kitchen, complete with integrated oven/hob and space for appliances
- Large master bedroom with en-suite shower room
- A further double bedroom and separate family bathroom
- uPVC double glazed windows and electric heating
- Private allocated parking and plenty of additional visitor spaces
- Landscaped communal grounds
- Ideal for first time buyers or investors
- Sold with no upward chain
- Agents Note: Photos used were taken prior to the current tenancy

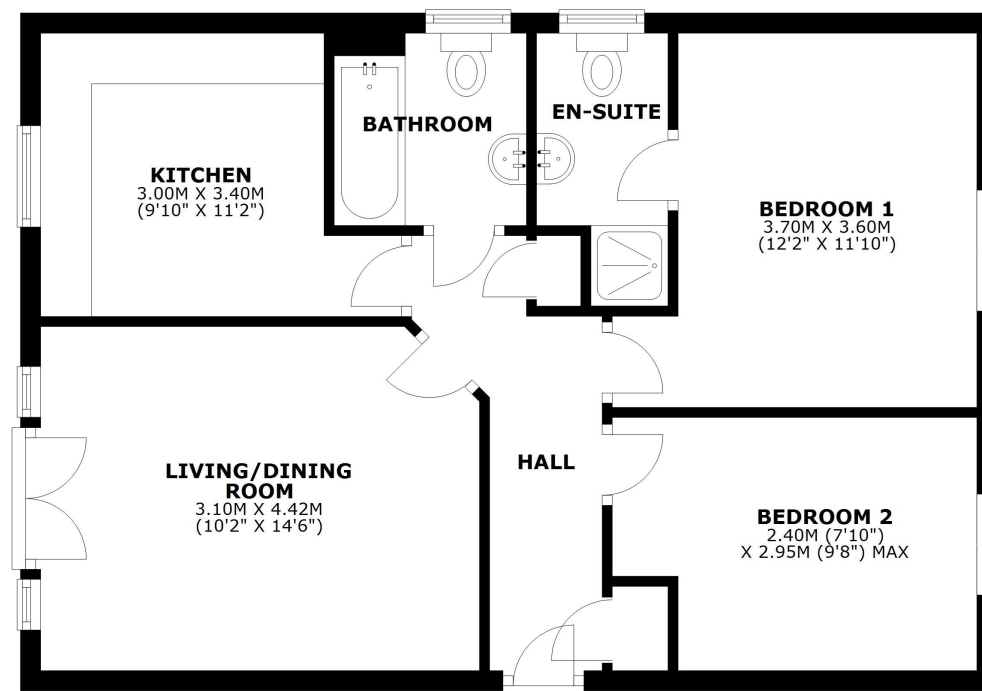
Cooper Green Pooks
3 Barker Street
Shrewsbury
SY1 1QF

www.cgpooks.co.uk
sales@cgpooks.co.uk



THIRD FLOOR

APPROX. 57.5 SQ. METRES (618.5 SQ. FEET)



TOTAL AREA: APPROX. 57.5 SQ. METRES (618.5 SQ. FEET)

We accept no responsibility for any mistake or inaccuracy contained within the floorplan. The floorplan is provided as a guide only and should be taken as an illustration only. The measurements, contents and positioning are approximations only and provided as a guidance tool and not an exact replication of the property.

Plan produced using PlanUp.





42 Greenfields Gardens, Shrewsbury, SY1 2RN

£165,000 Leasehold—2 bedroom apartment

sales@cgpooks.co.uk

Coopergreenpooks.co.uk



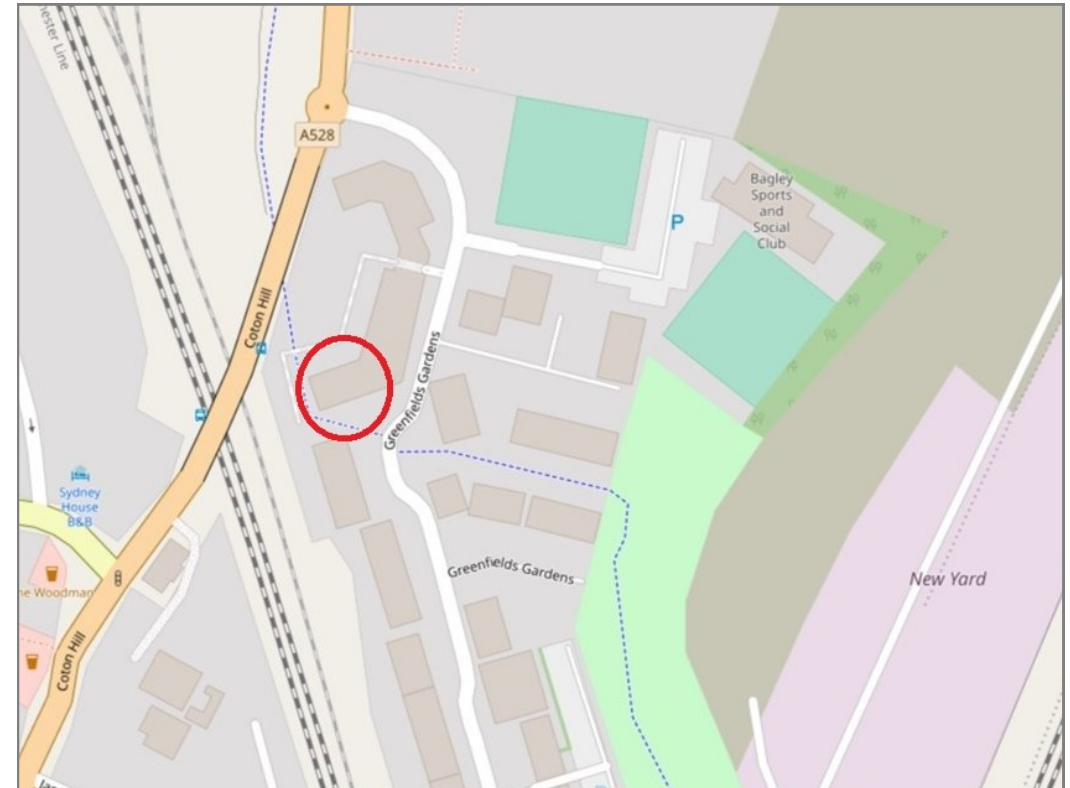
Cooper Green Pooks
3 Barker Street
Shrewsbury
SY1 1QF

www.cgpooks.co.uk
sales@cgpooks.co.uk
01743 276666



42 Greenfields Gardens, Shrewsbury, SY1 2RN

£165,000 Leasehold—2 bedroom apartment
sales@cgpooks.co.uk



Please note - Boundaries not confirmed

BOUNDARIES NOT CONFIRMED

Tenure	Leasehold
Lease	155 years from 1st April 2007
Local Authority	Shropshire Council
Council Tax	Band B
EPC Band	Band C
Services	Mains water, electricity and drainage are connected with electric heating

Expert mortgage advice available
3 Barker St, Shrewsbury SY1 1QF
Cooper Green Pooks
01743 276666



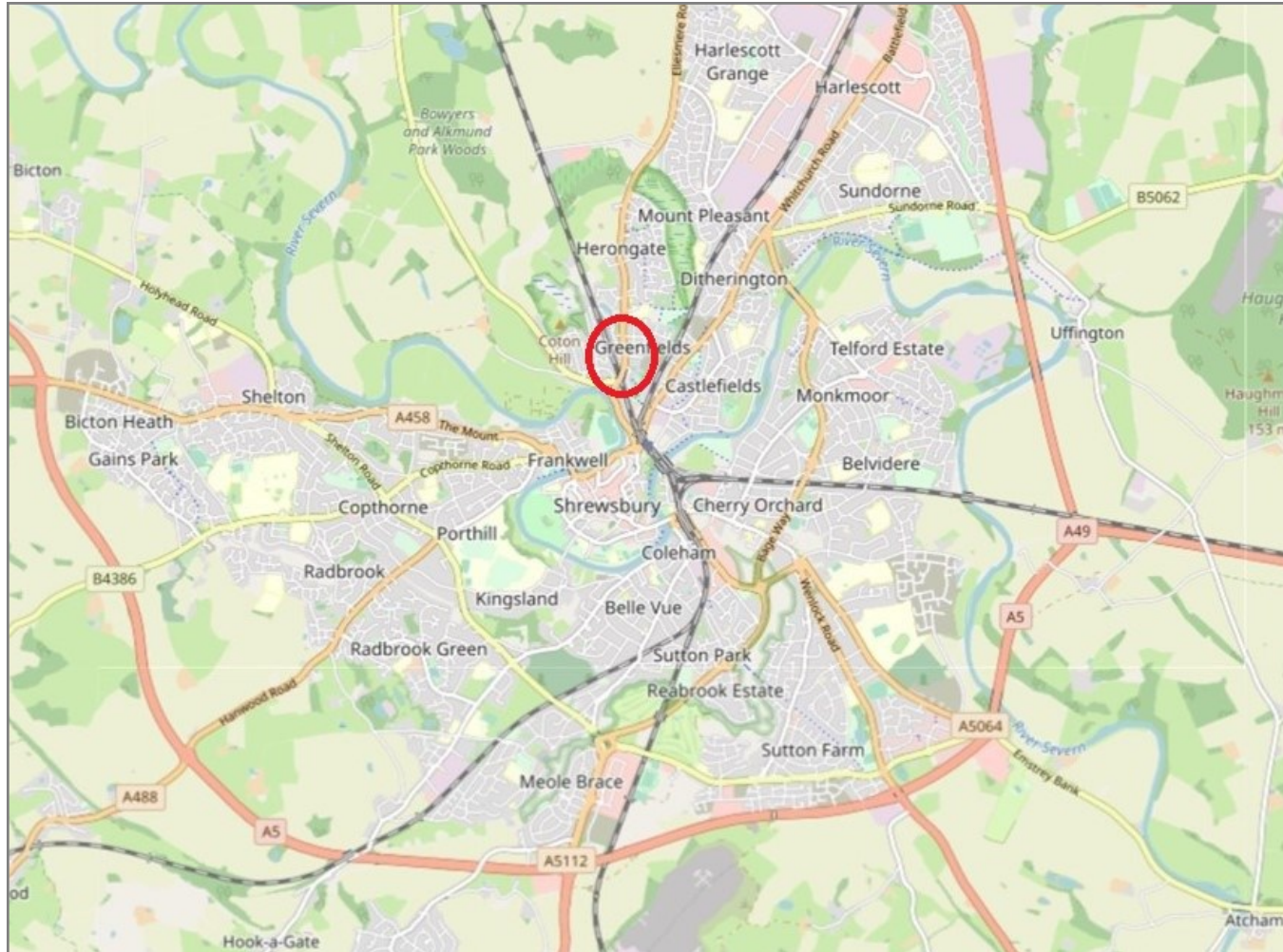
Your home may be repossessed if you do not keep up repayments on your mortgage.
There may be a fee for mortgage advice. The actual amount you pay will depend upon your circumstances. The fee is up to 1% but a typical fee is 0.3% of the amount borrowed.

42 Greenfields Gardens, Shrewsbury, SY1 2RN

Coopergreenpooks.co.uk

£165,000 Leasehold—2 bedroom apartment

sales@cgpooks.co.uk



IMPORTANT NOTICE: Cooper Green Pooks for themselves and for the lessors or vendors of this property whose agents they are give notice that: 1 No appliances, services or service installations have been tested and no warranty as to suitability or serviceability is implied. Any prospective purchaser or lessee is advised to obtain verification from their surveyor or solicitor. 2. The particulars are set out as a general outline only for the guidance of the intended purchasers or lessees and do not constitute, nor constitute part of, an offer or contract. 3. All descriptions, reference to condition and necessary permissions for use and occupation and other details are given in good faith and are believed to be correct but any intending purchasers or lessees should not rely on them as statements or representation of fact but satisfy themselves by inspection or otherwise as to the correctness of each of them. 4. No person in the employment of Cooper Green Pooks has any authority to make or give any representation or warranty whatsoever in relation to this property. 5. All rentals and prices are quoted exclusive of Stamp Duty, legal and surveyors fees and any other associated purchasers or lessees costs. 6. Floor plans are indicative only and should not be relied on. 7. The plan showing the boundary of the property is indicative only and has not been checked against the legal title so should not be relied on. 8. All dimensions, floor areas and site areas are only approximate and should not be relied on. Dimensions are generally maximum room dimension.