



43 Belgravia Court, Abbey Foregate, Shrewsbury, SY2 6BW

1 bedroom apartment—£137,500 Leasehold

43 Belgravia Court, Abbey Foregate, Shrewsbury, SY2 6BW

Coopergreenpooks.co.uk

£137,500 Leasehold—1 bedroom apartment

sales@cgpooks.co.uk

A well presented and improved third floor apartment occupying an elevated position within this popular development with lovely views over the Rea Brook Valley Nature Reserve. The property is conveniently located less than 1 mile from the town centre and is within walking distance from an excellent range of amenities, bars, restaurants and supermarkets.

KEY FEATURES

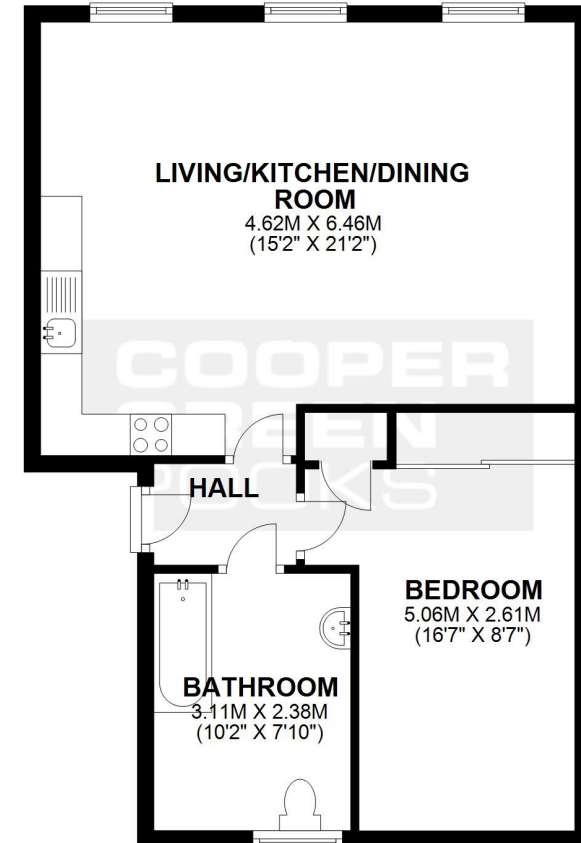
- Communal entrance hall and staircase to third floor
- Lovely open plan living/kitchen/dining room with view across nature reserve
- Modern re-fitted kitchen with integrated appliances
- Double bedroom with built-in wardrobes and useful storage cupboard
- Good sized bathroom with shower over bath
- uPVC double glazed windows and electric heating
- Attractively landscaped communal gardens for residents use
- Private designated parking space

Cooper Green Pooks
3 Barker Street
Shrewsbury
SY1 1QF

www.cgpooks.co.uk
sales@cgpooks.co.uk



THIRD FLOOR
APPROX. 56.9 SQ. METRES (612.9 SQ. FEET)



TOTAL AREA: APPROX. 56.9 SQ. METRES (612.9 SQ. FEET)

We accept no responsibility for any mistake or inaccuracy contained within the floorplan. The floorplan is provided as a guide only and should be taken as an illustration only. The measurements, contents and positioning are approximations only and provided as a guidance tool and not an exact replication of the property.

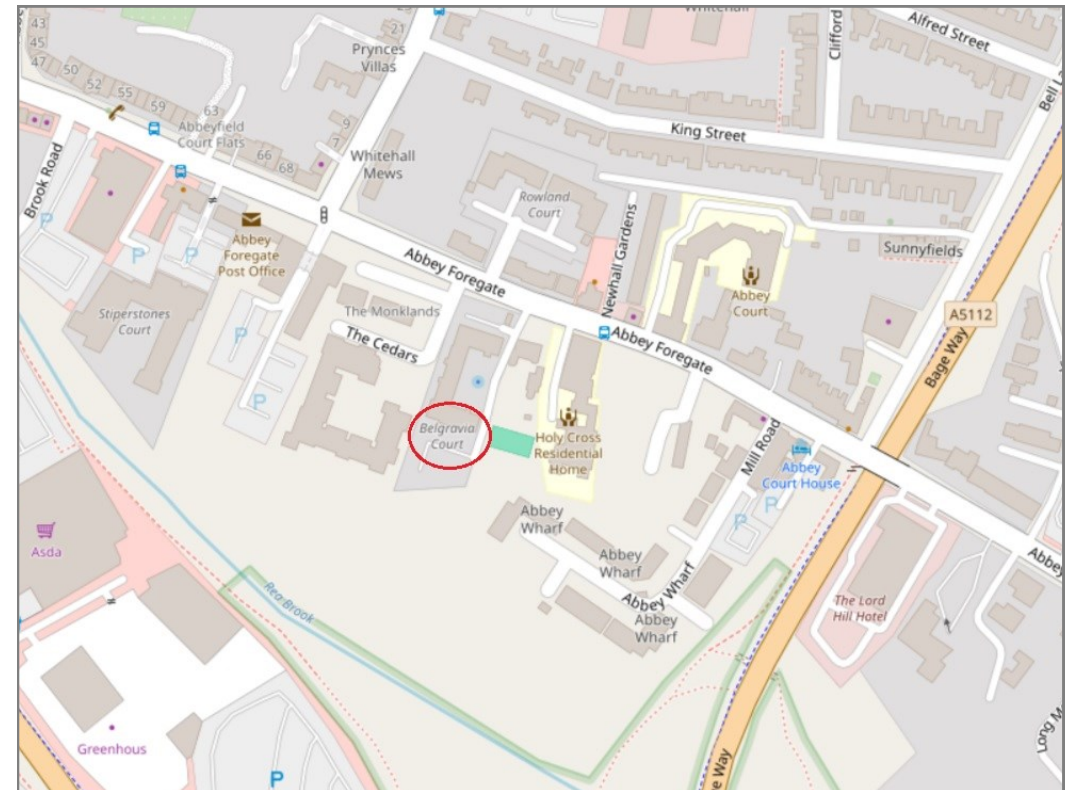
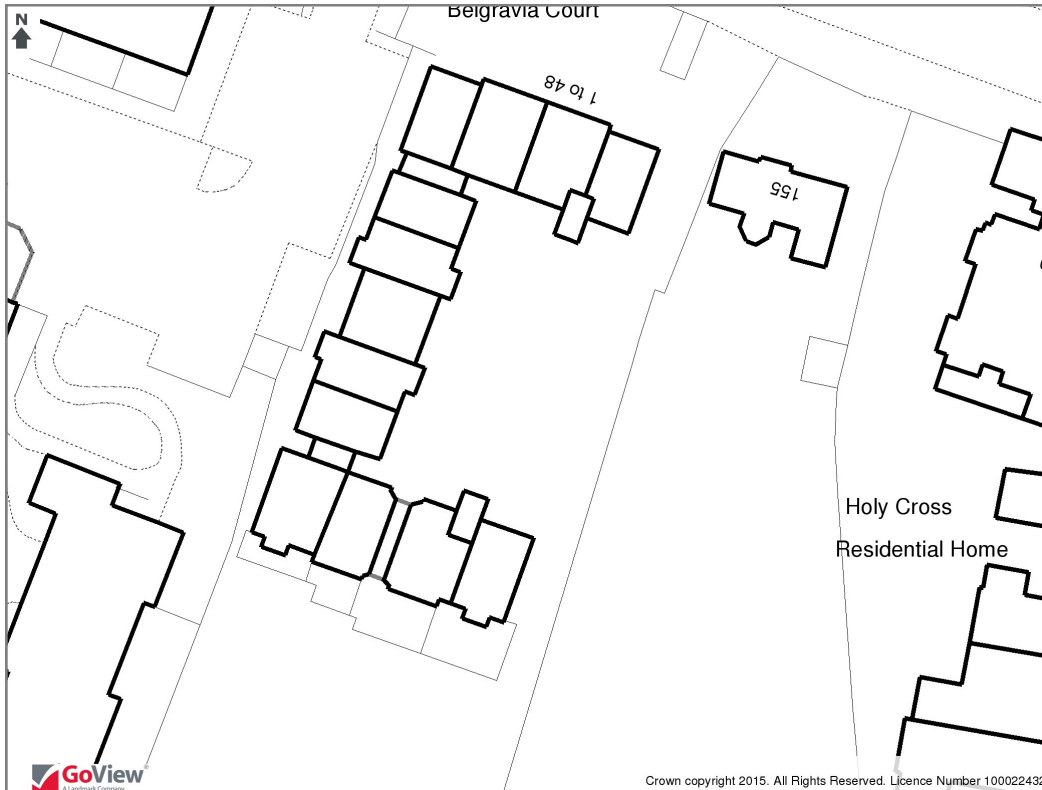
Plan produced using PlanUp.



43 Belgravia Court, Abbey Foregate, Shrewsbury, SY2 6BW

£137,500 Leasehold—1 bedroom apartment

sales@cgpooks.co.uk



BOUNDARIES NOT CONFIRMED

Tenure	Leasehold
Local Authority	Shropshire Council
Council Tax	Band A
EPC Band	Band C
Services	Mains water, electricity and drainage are connected

Expert mortgage advice available
3 Barker St, Shrewsbury SY1 1QF
Cooper Green Pooks
01743 276666



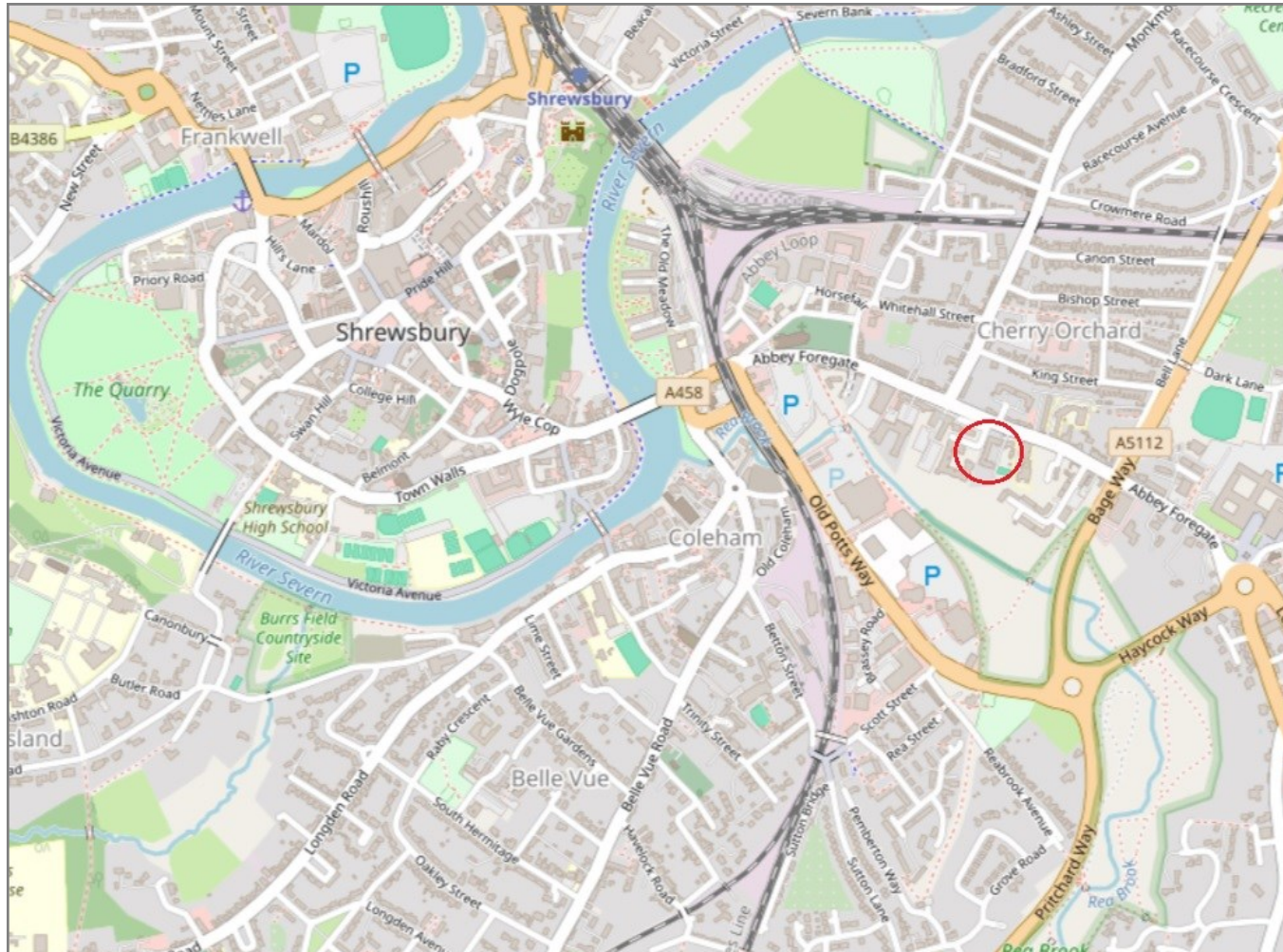
Your home may be repossessed if you do not keep up repayments on your mortgage.
There may be a fee for mortgage advice. The actual amount you pay will depend upon your circumstances. The fee is up to 1% but a typical fee is 0.3% of the amount borrowed.

43 Belgravia Court, Abbey Foregate, Shrewsbury, SY2 6BW

Coopergreenpooks.co.uk

£137,500 Leasehold—1 bedroom apartment

sales@cgpooks.co.uk



IMPORTANT NOTICE: Cooper Green Pooks for themselves and for the lessors or vendors of this property whose agents they are give notice that: 1 No appliances, services or service installations have been tested and no warranty as to suitability or serviceability is implied. Any prospective purchaser or lessee is advised to obtain verification from their surveyor or solicitor. 2. The particulars are set out as a general outline only for the guidance of the intended purchasers or lessees and do not constitute, nor constitute part of, an offer or contract. 3. All descriptions, reference to condition and necessary permissions for use and occupation and other details are given in good faith and are believed to be correct but any intending purchasers or lessees should not rely on them as statements or representation of fact but satisfy themselves by inspection or otherwise as to the correctness of each of them. 4. No person in the employment of Cooper Green Pooks has any authority to make or give any representation or warranty whatsoever in relation to this property. 5. All rentals and prices are quoted exclusive of Stamp Duty, legal and surveyors fees and any other associated purchasers or lessees costs. 6. Floor plans are indicative only and should not be relied on. 7. The plan showing the boundary of the property is indicative only and has not been checked against the legal title so should not be relied on. 8. All dimensions, floor areas and site areas are only approximate and should not be relied on. Dimensions are generally maximum room dimension.