



31 Radbrook Hall Court, Shrewsbury, SY3 9AF

2 bedroom apartment — £139,950 Leasehold

31 Radbrook Hall Court, Shrewsbury, SY3 9AF

Coopergreenpooks.co.uk

£139,950 Leasehold — 2 bedroom apartment

sales@cgpooks.co.uk

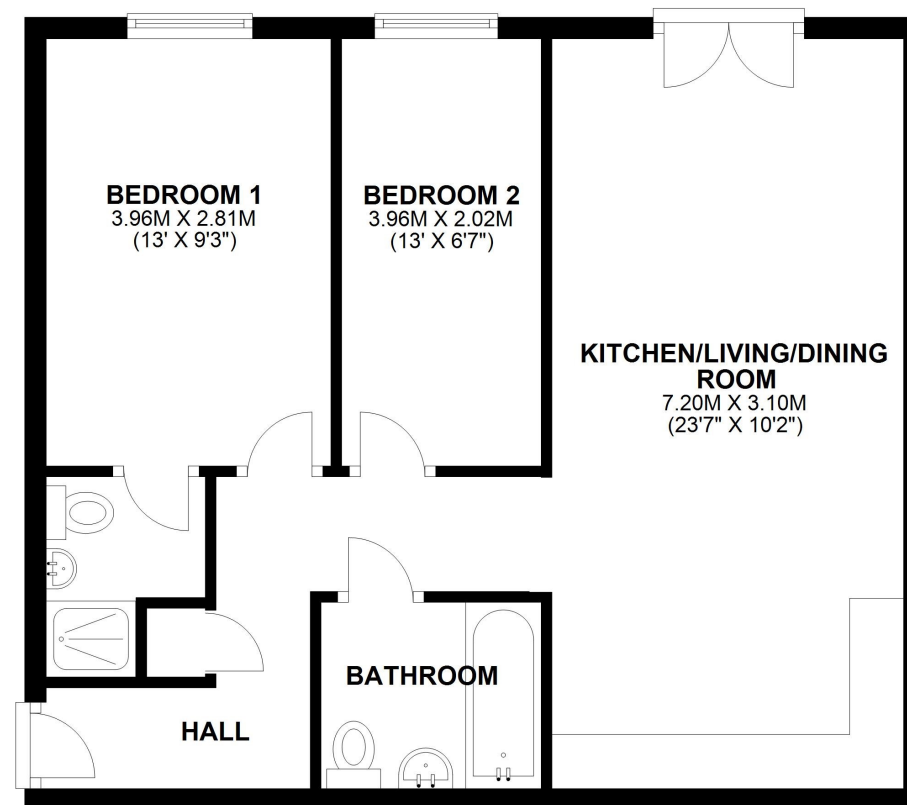
This very neatly presented first floor apartment offers practical and well-proportioned accommodation, while benefitting from private allocated parking and a pleasant outlook to rear.

KEY FEATURES

- Good sized entrance hall with telephone and camera entry system
- Lovely open plan kitchen/living/dining room with Juliette balcony offering views to rear
- A range of fitted units to kitchen area, including an integrated washing machine/dryer, dishwasher, cooker and four ring hob, as well as a fridge/freezer
- Master bedroom and en-suite shower room
- A further bedroom and separate family bathroom
- uPVC double glazed windows and electric heating
- Private allocated parking and additional visitor spaces
- A superb location, just a short distance from Radbrook's excellent range of amenities, road links via the bypass, the Royal Shrewsbury Hospital, and just over a mile from the Quarry Park and town centre
- Ideal for investors or first time buyers
- Sold with no upward chain

FIRST FLOOR

APPROX. 57.3 SQ. METRES (616.7 SQ. FEET)



TOTAL AREA: APPROX. 57.3 SQ. METRES (616.7 SQ. FEET)

We accept no responsibility for any mistake or inaccuracy contained within the floorplan. The floorplan is provided as a guide only and should be taken as an illustration only. The measurements, contents and positioning are approximations only and provided as a guidance tool and not an exact replication of the property.

Plan produced using PlanUp.

Cooper Green Pooks
3 Barker Street
Shrewsbury
SY1 1QF



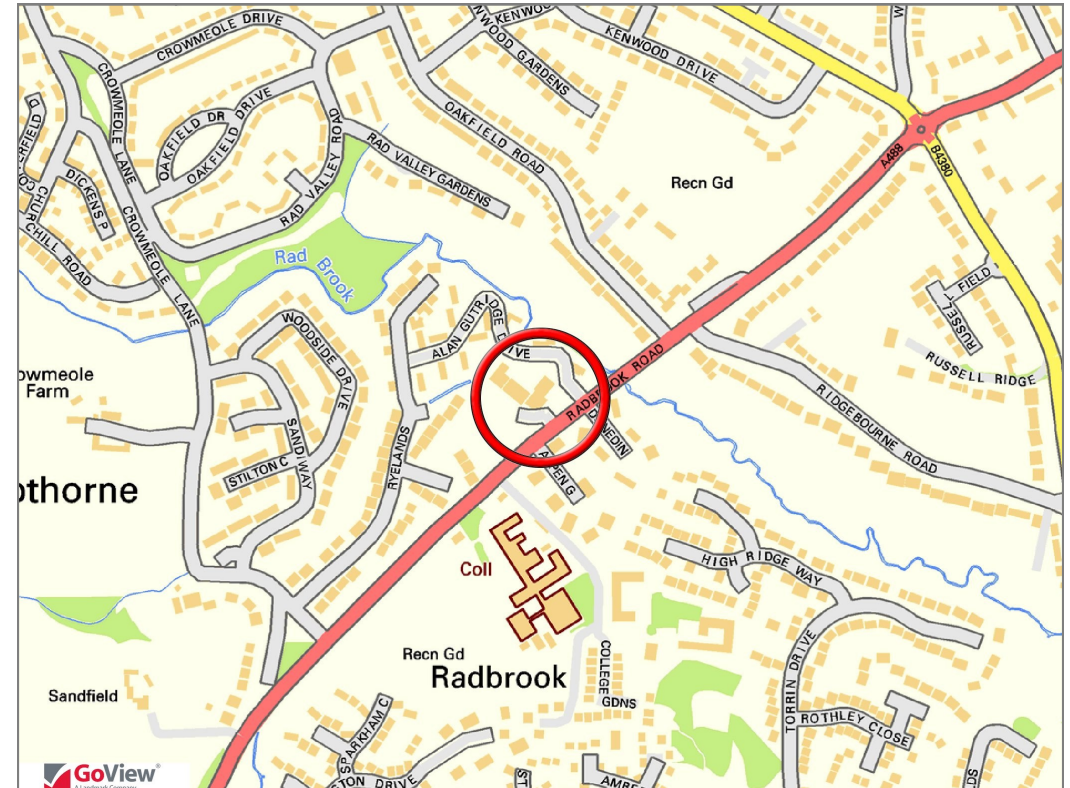
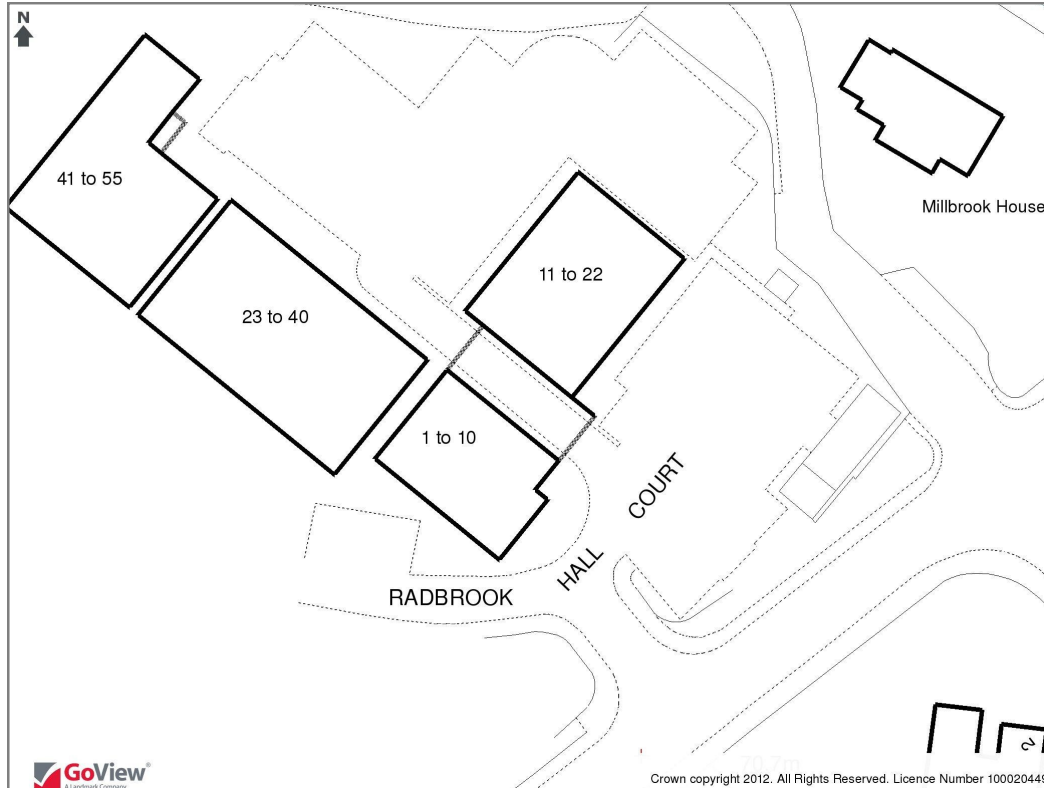




31 Radbrook Hall Court, Shrewsbury, SY3 9AF

£139,950 Leasehold — 2 bedroom apartment

sales@cgpooks.co.uk



BOUNDARIES NOT CONFIRMED

Tenure	Leasehold
Service Charge	£1032.95 PA (Paid for 2024)
Ground Rent	£250 PA
Local Authority	Shropshire Council
Council Tax	Band B
EPC Band	Band C
Services	Mains electricity, water and drainage are connected

Expert mortgage advice available
3 Barker St, Shrewsbury SY1 1QF
Cooper Green Pooks
01743 276666



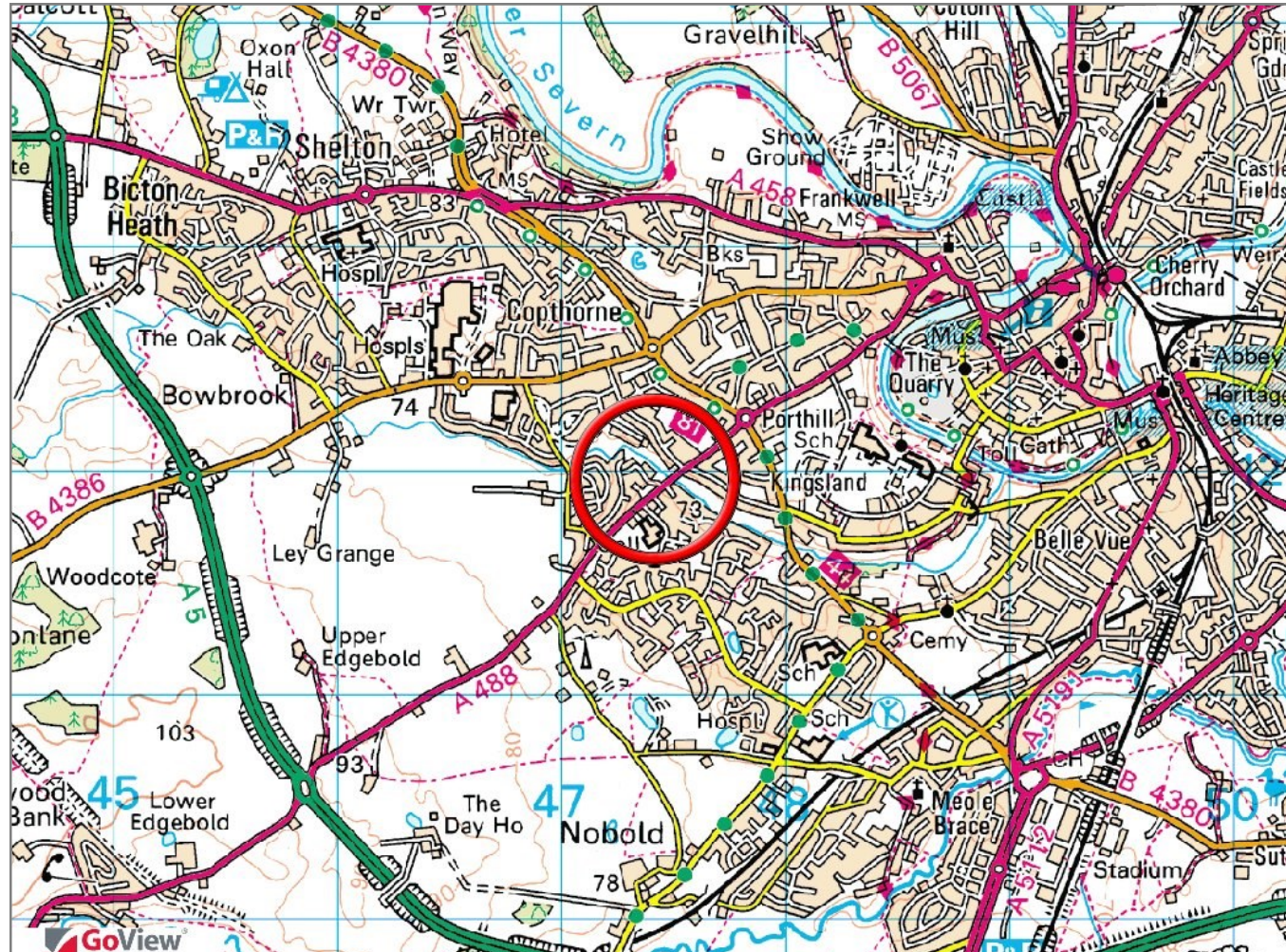
Your home may be repossessed if you do not keep up repayments on your mortgage.
There may be a fee for mortgage advice. The actual amount you pay will depend upon your circumstances. The fee is up to 1% but a typical fee is 0.3% of the amount borrowed.

31 Radbrook Hall Court, Shrewsbury, SY3 9AF

Coopergreenpooks.co.uk

£139,950 Leasehold — 2 bedroom apartment

sales@cgpooks.co.uk



IMPORTANT NOTICE: Cooper Green Pooks for themselves and for the lessors or vendors of this property whose agents they are give notice that: 1 No appliances, services or service installations have been tested and no warranty as to suitability or serviceability is implied. Any prospective purchaser or lessee is advised to obtain verification from their surveyor or solicitor. 2. The particulars are set out as a general outline only for the guidance of the intended purchasers or lessees and do not constitute, nor constitute part of, an offer or contract. 3. All descriptions, reference to condition and necessary permissions for use and occupation and other details are given in good faith and are believed to be correct but any intending purchasers or lessees should not rely on them as statements or representation of fact but satisfy themselves by inspection or otherwise as to the correctness of each of them. 4. No person in the employment of Cooper Green Pooks has any authority to make or give any representation or warranty whatsoever in relation to this property. 5. All rentals and prices are quoted exclusive of Stamp Duty, legal and surveyors fees and any other associated purchasers or lessees costs. 6. Floor plans are indicative only and should not be relied on. 7. The plan showing the boundary of the property is indicative only and has not been checked against the legal title so should not be relied on. 8. All dimensions, floor areas and site areas are only approximate and should not be relied on. Dimensions are generally maximum room dimension.