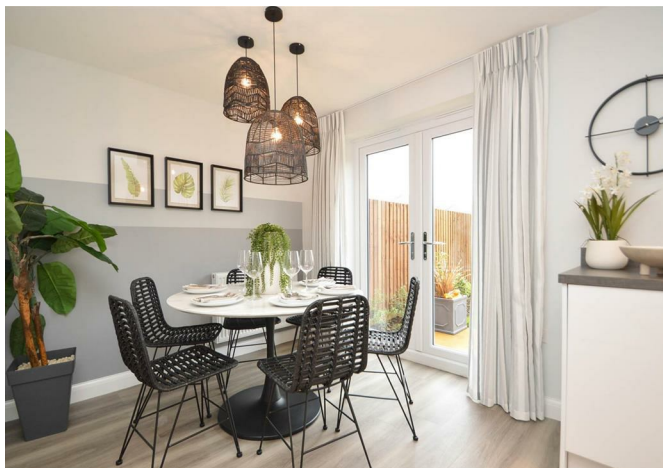




Plot 58 The Archford, Rose Place, Welshpool Road, Shrewsbury, SY3 5BU

£308,000

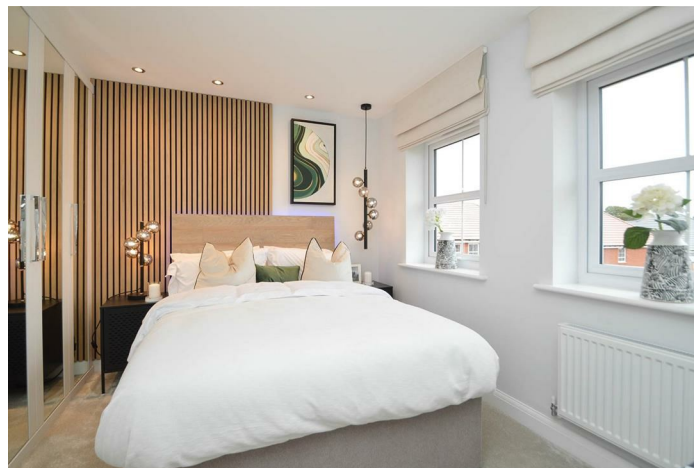


Plot 58 The Archford, Rose Place, Welshpool Road, Shrewsbury, SY3 5BU

£308,000

A stylish terrace home, The Archford has an open-plan kitchen with dining area designed for practical, modern living with French doors opening onto the rear garden creating a bright, light-filled room. A lobby separating the kitchen and the front-aspect lounge, has stairs leading to the first floor. Here, the main bedroom has its one ensuite, with a separate bathroom for the rest of the family. A further double bedroom and a single bedroom make this an attractive family home

Description

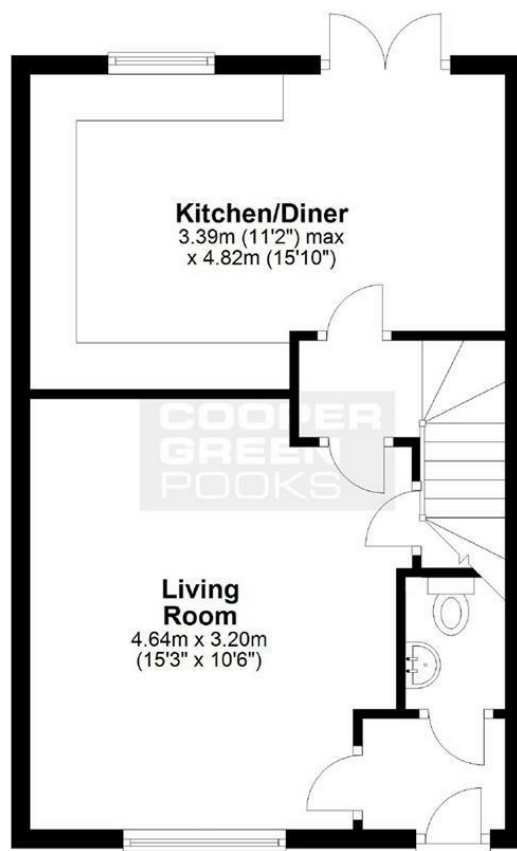


null
Council Tax Band: New Build
Available:
EPC:

Floor Plans

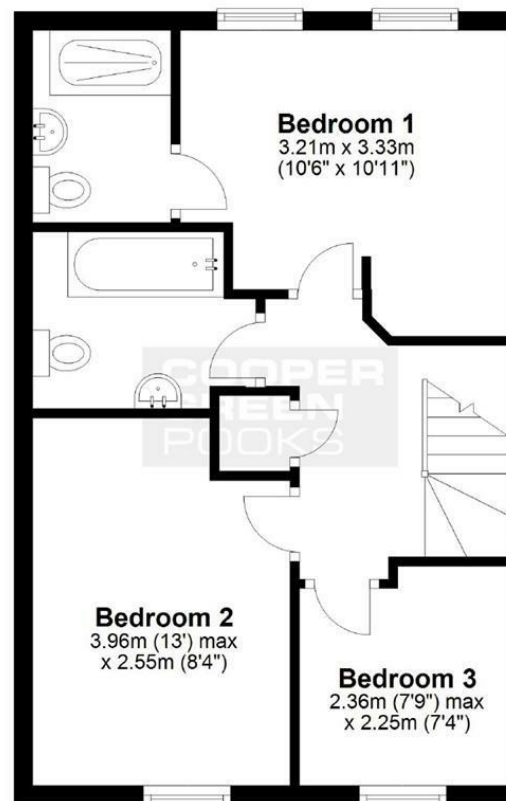
Ground Floor

Approx. 41.1 sq. metres (442.7 sq. feet)



First Floor

Approx. 42.8 sq. metres (460.2 sq. feet)



Total area: approx. 83.9 sq. metres (902.9 sq. feet)

We accept no responsibility for any mistake or inaccuracy contained within the floorplan. The floorplan is provided as a guide only and should be taken as an illustration only. The measurements, contents and positioning are approximations only and provided as a guidance tool and not an exact replication of the property.

Plan produced using PlanUp.

These particulars, whilst believed to be accurate are set out as a general outline only for guidance and do not constitute any part of an offer or contract. Intending purchasers should not rely on them as statements of representation of fact, but must satisfy themselves by inspection or otherwise as to their accuracy. No person in this firm's employment has the authority to make or give any representation or warranty in respect of the property.