

**COOPER
GREEN
POOKS**



4 Thomas Court, Shrewsbury, Shropshire, SY3 7EX

4 bedroom penthouse retirement apartment — £255,000 Leasehold

4 Thomas Court, Shrewsbury, Shropshire, SY3 7EX

£255,000 Leasehold— 4 bedroom penthouse retirement apartment

Coopergreenpooks.co.uk/property/29734

Occupying an elevated position within a popular riverside development, this light and spacious penthouse apartment offers well-designed accommodation over two floors, benefitting from beautifully landscaped communal gardens adjoining the River Severn.

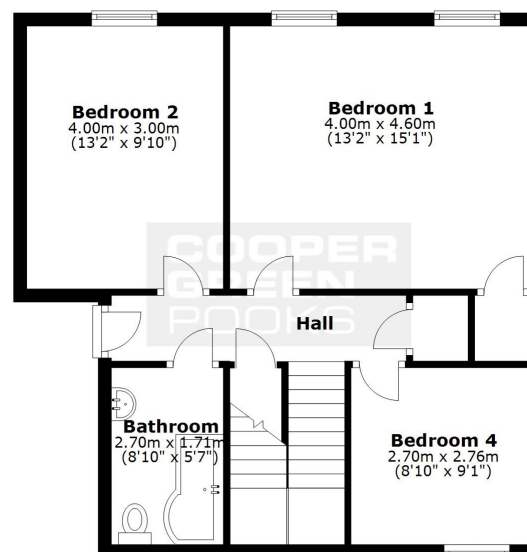
KEY FEATURES

- Entrance hall with plenty of useful storage
- Three bedrooms (two doubles and a single) and a separate family bathroom on the first floor
- Turning staircase to fantastic open plan living/dining room with windows to three elevations and views towards the town centre
- Kitchen with a range of fitted units and space for appliances
- Additional double bedroom on the second floor with velux window, which would also make an excellent study
- Double glazed sash windows and electric heating
- Private parking for residents as well as visitor spaces
- Beautifully landscaped communal gardens including a section of lawn with seating area which overlooks the River Severn and English Bridge
- On site house manager offering peace of mind and security for older/more vulnerable residents
- Minimum age requirement is currently set at 45 years

Coopergreenpooks.co.uk

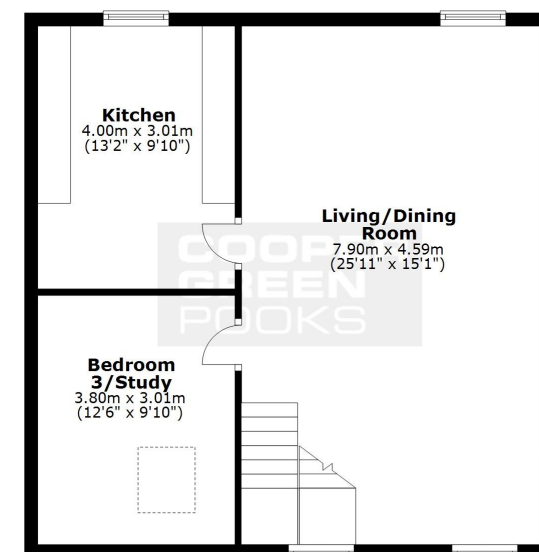
First Floor

Approx. 55.8 sq. metres (600.8 sq. feet)



Second Floor

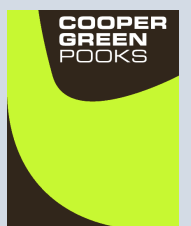
Approx. 60.8 sq. metres (654.9 sq. feet)



Total area: approx. 116.7 sq. metres (1255.7 sq. feet)

We accept no responsibility for any mistake or inaccuracy contained within the floorplan. The floorplan is provided as a guide only and should be taken as an illustration only. The measurements, contents and positioning are approximations only and provided as a guidance tool and not an exact replication of the property.
Plan produced using PlanUp.

Cooper Green Pooks
3 Barker Street
Shrewsbury
SY1 1QF





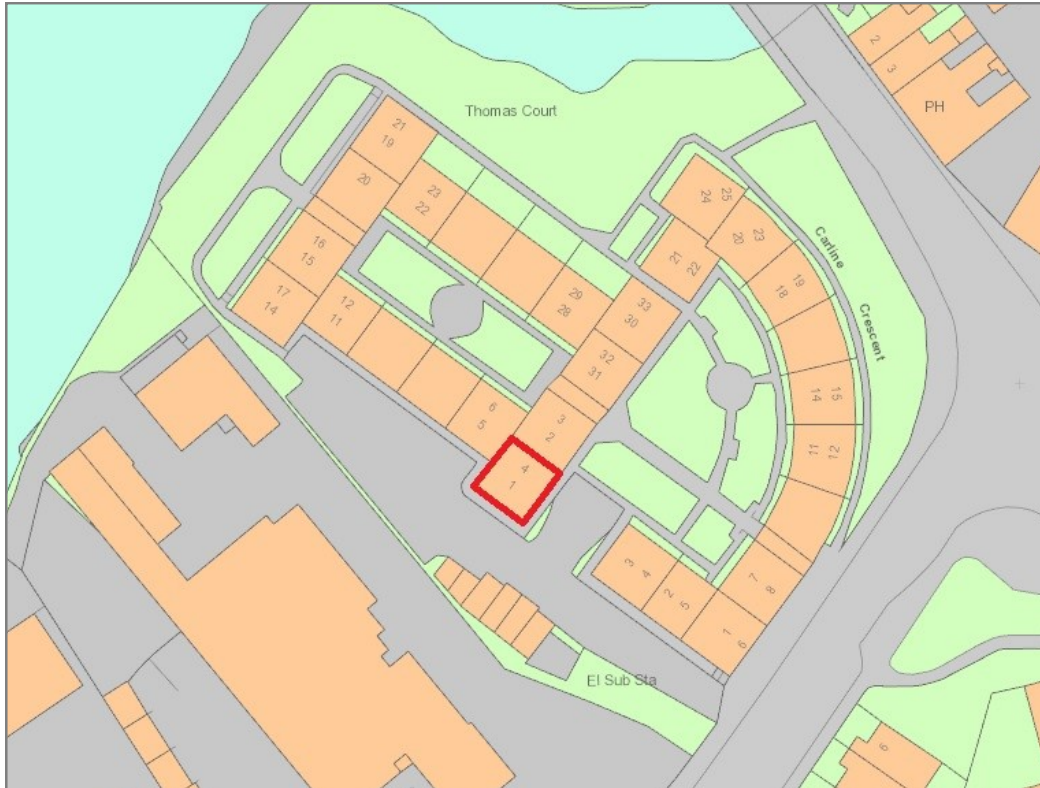




4 Thomas Court, Shrewsbury, Shropshire, SY3 7EX

£255,000 Leasehold— 4 bedroom penthouse retirement apartment

Coopergreenpooks.co.uk/property/29734



Tenure	Leasehold
Local Authority	Shropshire Council
Council Tax	Band D
EPC Band	Band D
Services	All mains services are connected

Expert mortgage advice available

3 Barker St, Shrewsbury SY1 1QF

Cooper Green Pooks
01743 276666



Your home may be repossessed if you do not keep up repayments on your mortgage.

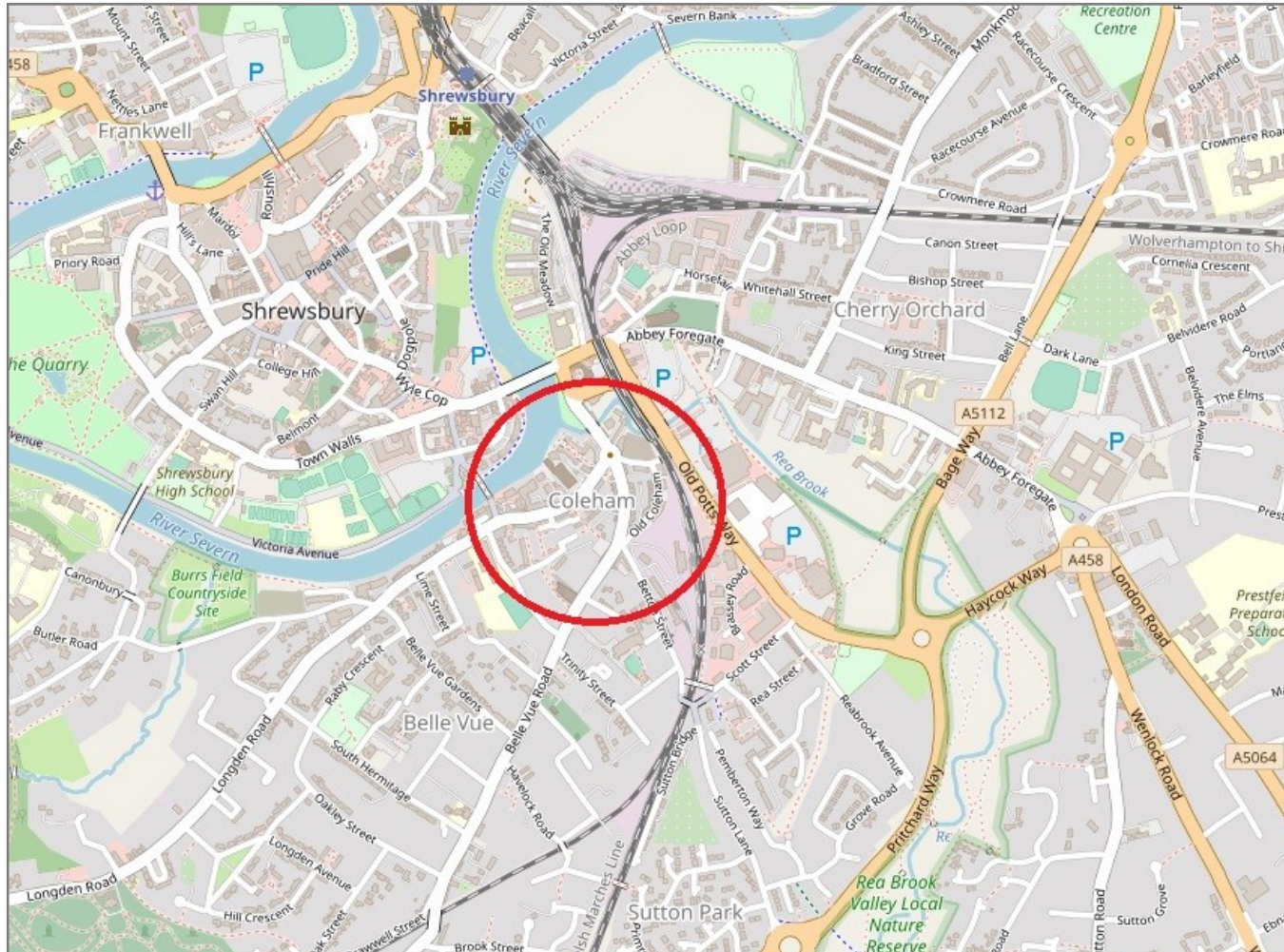
There may be a fee for mortgage advice. The actual amount you pay will depend upon your circumstances. The fee is up to 1% but a typical fee is 0.3% of the amount borrowed.

4 Thomas Court, Shrewsbury, Shropshire, SY3 7EX

Coopergreenpooks.co.uk

£255,000 Leasehold— 4 bedroom penthouse retirement apartment

Coopergreenpooks.co.uk/property/29734



IMPORTANT NOTICE: Cooper Green Pooks for themselves and for the lessors or vendors of this property whose agents they are give notice that: 1 No appliances, services or service installations have been tested and no warranty as to suitability or serviceability is implied. Any prospective purchaser or lessee is advised to obtain verification from their surveyor or solicitor. 2. The particulars are set out as a general outline only for the guidance of the intended purchasers or lessees and do not constitute, nor constitute part of, an offer or contract. 3. All descriptions, reference to condition and necessary permissions for use and occupation and other details are given in good faith and are believed to be correct but any intending purchasers or lessees should not rely on them as statements or representation of fact but satisfy themselves by inspection or otherwise as to the correctness of each of them. 4. No person in the employment of Cooper Green Pooks has any authority to make or give any representation or warranty whatsoever in relation to this property. 5. All rentals and prices are quoted exclusive of Stamp Duty, legal and surveyors fees and any other associated purchasers or lessees costs. 6. Floor plans are indicative only and should not be relied on. 7. The plan showing the boundary of the property is indicative only and has not been checked against the legal title so should not be relied on. 8. All dimensions, floor areas and site areas are only approximate and should not be relied on. Dimensions are generally maximum room dimension.