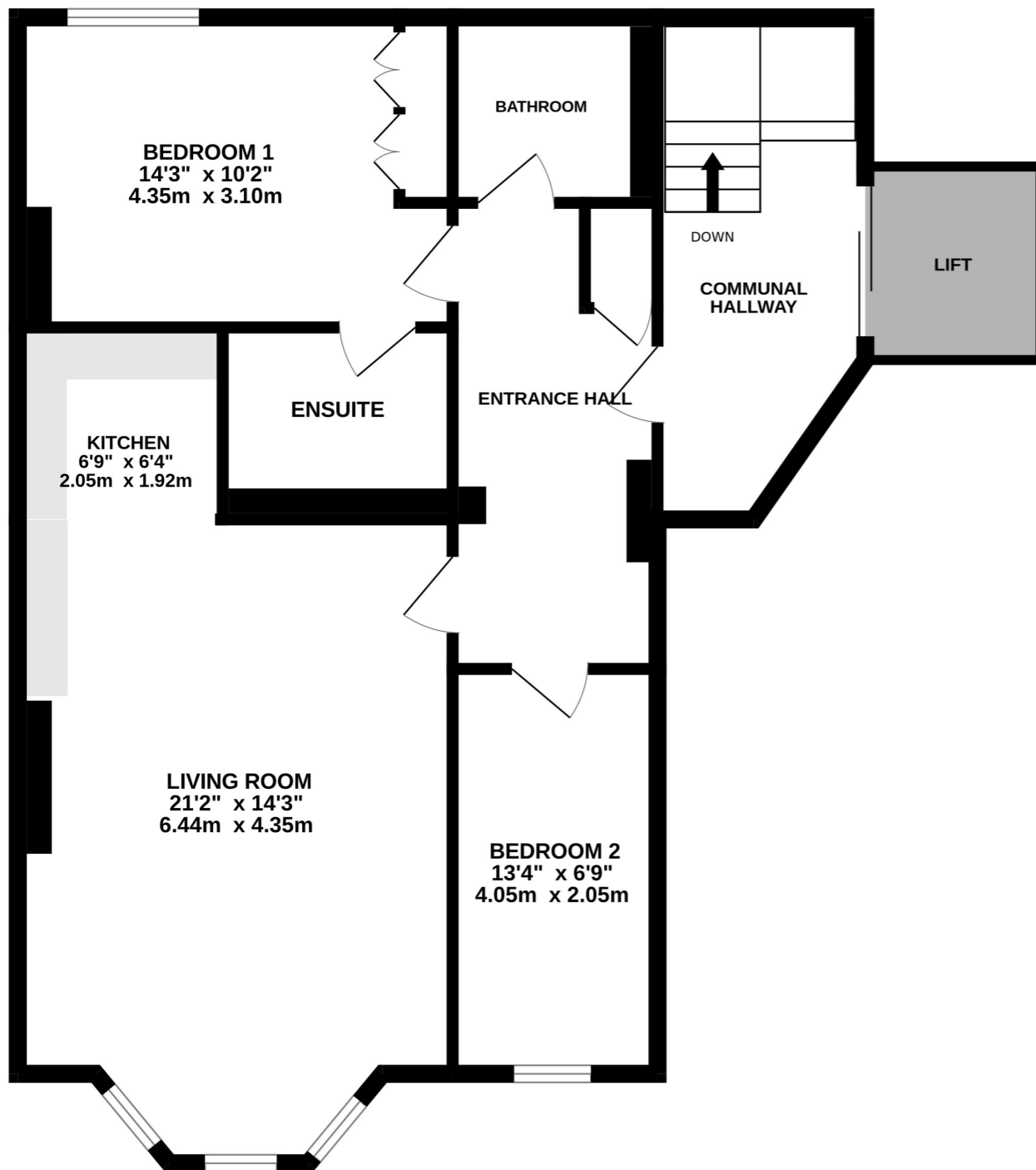


FIRST FLOOR  
745 sq.ft. (69.2 sq.m.) approx.



TOTAL FLOOR AREA : 745sq.ft. (69.2 sq.m.) approx.  
Measurements are approximate. Not to scale. Illustrative purposes only  
Made with Metropix ©2025

9 Albert Street, Harrogate  
North Yorkshire HG1 1JX  
Sales: 01423 503076  
Lettings: 01423 530744

These particulars are given as guidance only and are expressly excluded from any contract. They give no warranty as to the condition or description and any recipient must satisfy himself on all matters stated herein. The property is offered subject to contract and to its being unsold and unlet. Appointments for viewing and contract of all negotiations shall be through Nicholls Tyreman Estate Agent.



**APARTMENT 4, ELGAR COURT**  
**29-35 VALLEY DRIVE, HARROGATE, HG2 0JN**

**£1,395 PCM**

**APARTMENT 4 | ELGAR COURT | 29-35 VALLEY DRIVE  
HARROGATE | HG2 0JN**

A stunning, spacious first floor apartment located in this enviable position overlooking the Valley Gardens, and being within easy walking distance of the fantastic Cold Bath Road shopping parade and Harrogate town centre.

Communal Hallway | Lift | Entrance Hall | Living Room | Kitchen

Two Bedrooms | En-suite | House Bathroom

Available 1 August 2025 | Returnable Bond £1,609.61

Unfurnished | No Smokers/Pets | Energy Rating: C | Council Tax: E



The property truly requires an internal inspection to appreciate the beautifully appointed accommodation which has the benefit of double glazing, central heating and a recently fitted kitchen.

The property comprises: Communal entrance vestibule with intercom system, entrance hall with lift and staircase to the first floor, entrance hall with storage cupboard and space for washing machine and a fitted kitchen with integrated appliances which is open plan to the magnificent living room with large bay window overlooking the Valley Gardens and wood strip flooring. The principal bedroom has a built-in wardrobe and en-suite shower room, there is also a second bedroom and house bathroom.

