

Turner Court (RENTAL)

Berkhamsted

Turner Court (RENTAL)

Berkhamsted

£1,400 Per Calendar Month

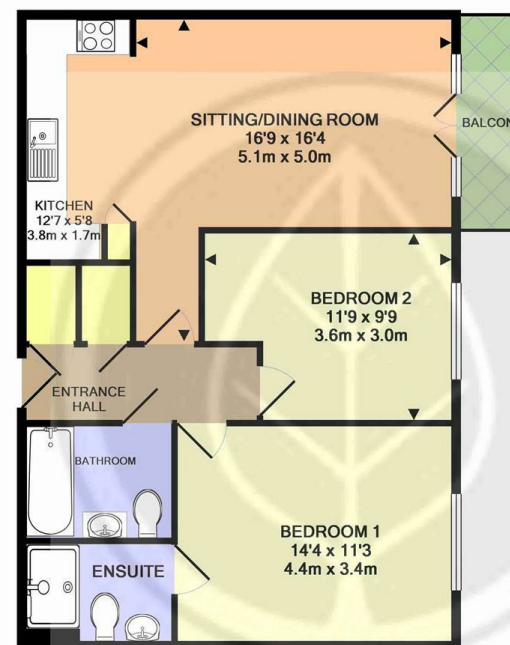
entrance hall | open-plan sitting/dining room and kitchen | master bedroom with ensuite shower | second bedroom | family bathroom | balcony | allocated parking

A stylish and beautifully presented first floor apartment with balcony and parking, situated in this popular development within walking distance of the town centre and mainline station.

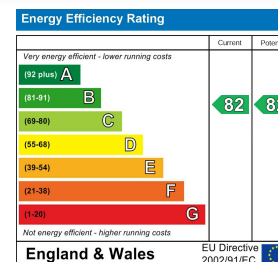
- * Two double bedrooms
- * Sitting/dining room
- * Kitchen
- * Two bathrooms
- * South facing balcony
- * Allocated parking
- * Council tax band D (Dacorum)
- * UNFURNISHED

Situation

Berkhamsted, surrounded by attractive Chilterns countryside, is an historic market town offering excellent shopping, sporting and educational facilities. For commuters, the A41 bypass offers good connections to both the M1 and M25 and the mainline station provides a fast and frequent service to London (Euston).



TURNER COURT, BERKHAMSTED HP4 3ZE (PRODUCED FOR OAKLEYS)
TOTAL APPROX. FLOOR AREA 702 SQ.FT. (65.2 SQ.M.)
No accuracy to this image, text or measurements is guaranteed
Made with Metropix ©2014



These particulars are produced in good faith, are set out as a general guide only and do not constitute any part of a contract. None of the statements are to be relied on as a statement of fact. Areas, measurements or distances are given as a guide only. We have not tested any of the equipment, appliances or services to this property nor do we have knowledge of any defects.

Relax... you're with Oakleys

151 High Street Berkhamsted Hertfordshire HP4 3HH 01442 386555 www.oakleysestate.co.uk



Oakleys