



Hemel Hempstead Road
Dagnall

Hemel Hempstead Road

Dagnall

£2,700 Per Calendar Month

entrance hall | open-plan kitchen/breakfast/dining room | pantry | hallway | four bedrooms | family shower room | Jack-and-Jill shower room | lower ground floor hallway | games/family room | study | gardens | off-road parking

Surrounded on all sides by beautiful Chilterns' countryside but conveniently just a short drive away from a number of towns and villages, this detached family home offers generous accommodation and off-road parking.

Slightly elevated ground floor accommodation consists of a very spacious open-plan kitchen/breakfast/dining room with separate pantry. Four bedrooms and two shower rooms are located off an inner hallway.

The lower ground floor houses a large reception/family room and a study. NB. the landlord has retained some space on the lower floor for storage purposes.

Outside, lawns wraparound the side and rear of the property. Magnificent views of rolling countryside are a true feature of this location. There is gated driveway access to the parking area. Limited storage space is available within the garage, but it cannot accommodate a car.

The property is available part-furnished or unfurnished.

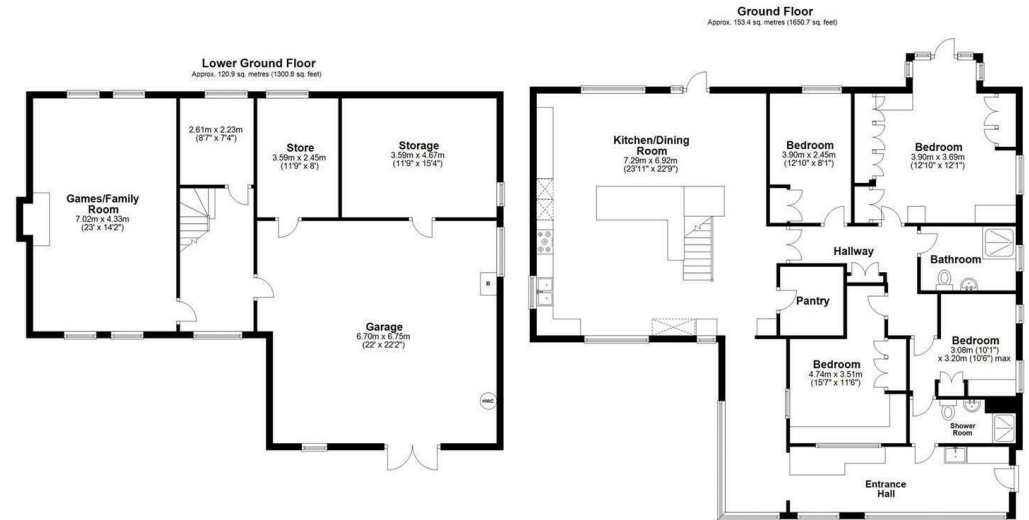
Services

Ground source heat pump. Council tax band G (Central Bedfordshire).

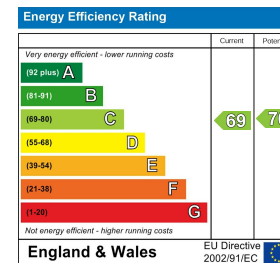
Situation

A scenic semi-rural setting between Dagnall and Hemel Hempstead. The nearby towns of Berkhamsted, Tring and Hemel Hempstead offer excellent shopping, recreational and educational facilities. The M1 and M25 are within easy reach, while the mainline stations at Tring and Berkhamsted provide fast and frequent services to London (Euston).

These particulars are produced in good faith, are set out as a general guide only and do not constitute any part of a contract. None of the statements are to be relied on as a statement of fact. Areas, measurements or distances are given as a guide only. We have not tested any of the equipment, appliances or services to this property nor do we have knowledge of any defects.



Total area: approx. 274.2 sq. metres (2951.5 sq. feet)
Disclaimer - Floor plan is for marketing purposes only and is to be used as a guide - SKM Studio
Plan produced using PlanIt.



Relax... you're with Oakleys

151 High Street Berkhamsted Hertfordshire HP4 3HH 01442 386555 www.oakleysestate.co.uk

