

shepherds

A better home
moving experience



17 Wellington Street

Hertford, SG14 3AN

Price Guide £410,000



17 Wellington Street

Hertford, SG14 3AN

An exceptionally charming and beautifully presented two-bedroom Victorian terraced cottage, positioned in one of Hertford's most desirable locations just moments from Hertford North mainline station and the vibrant town centre with its excellent range of shops, cafés and amenities. This attractive character home offers stylish and well-planned accommodation including an inviting living room with a feature wood-burning stove, a fitted kitchen and ground floor bathroom. The property further benefits from double glazing and gas central heating throughout, a private and secluded rear courtyard garden ideal for outdoor entertaining, and a brick-built outbuilding with exciting potential to create a home office, studio or additional storage space. A rare opportunity to acquire a delightful period home in a prime location.

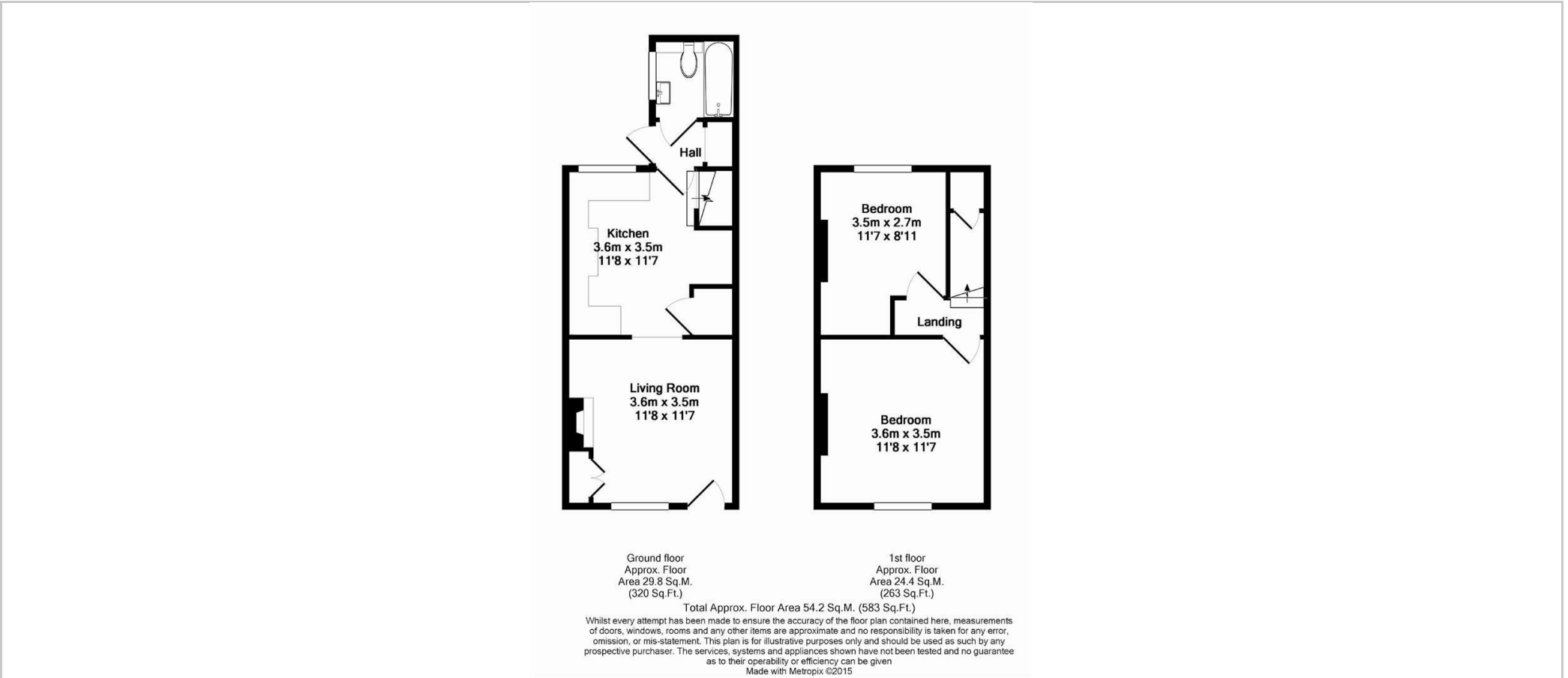




- Highly sought-after location within walking distance of Hertford North station and the town centre
- Charming two-bedroom Victorian terraced cottage full of character
- Inviting living room featuring a wood-burning stove
- Fitted kitchen and ground-floor bathroom
- Double glazing and gas central heating throughout
- Private and secluded rear courtyard garden, ideal for relaxing or entertaining
- Brick-built outbuilding with potential for use as a home office, studio or storage
- An ideal purchase for first-time buyers, downsizers or investors alike



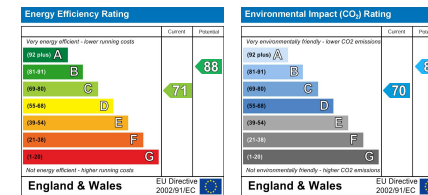
Floor Plan



Viewing

Please contact Shepherds of Hertford on 01992 551955 if you wish to arrange a viewing appointment for this property or require further information.

Energy Performance Graph



These particulars, whilst believed to be accurate are set out as a general outline only for guidance and do not constitute any part of an offer or contract. Intending purchasers should not rely on them as statements of representation of fact, but must satisfy themselves by inspection or otherwise as to their accuracy. No person in this firm's employment has the authority to make or give any representation or warranty in respect of the property.

Riverside House, 6 Millbridge, Hertford, SG14 1PY
Tel: 01992 551955 Email: enquiries@shepherdsfhertford.co.uk