

shepherds
A better home
moving experience



46 Woodlands Road

Hertford, SG13 7JF

Price Guide £625,000



46 Woodlands Road

Hertford, SG13 7JF

Charming Larger than Average Extended Family Home in a Peaceful Hertford Cul-de-Sac

Tucked away on a tranquil no-through road on the sought-after east side of Hertford, this beautifully maintained three-bedroom semi-detached home blends space, comfort, and opportunity in equal measure.

Step inside to discover a generous 20' x 17' living room—perfect for relaxing or entertaining—alongside a separate dining room and a well-proportioned kitchen with its own utility room. A handy downstairs wet room adds practicality, while a versatile study provides options for a home office, playroom, or even an extra bedroom.

Upstairs, you'll find a sleek, refitted shower room and three well-sized bedrooms, ideal for growing families. The standout feature? A stunning rear garden extending over 90 feet, lovingly stocked and mainly laid to lawn—offering a peaceful escape and plenty of room for outdoor living.

With off-street parking to the front and the potential to extend further (subject to normal planning consents) and add your own style over time, this is a warm, welcoming home that's ready to be enjoyed—and full of promise for the future.

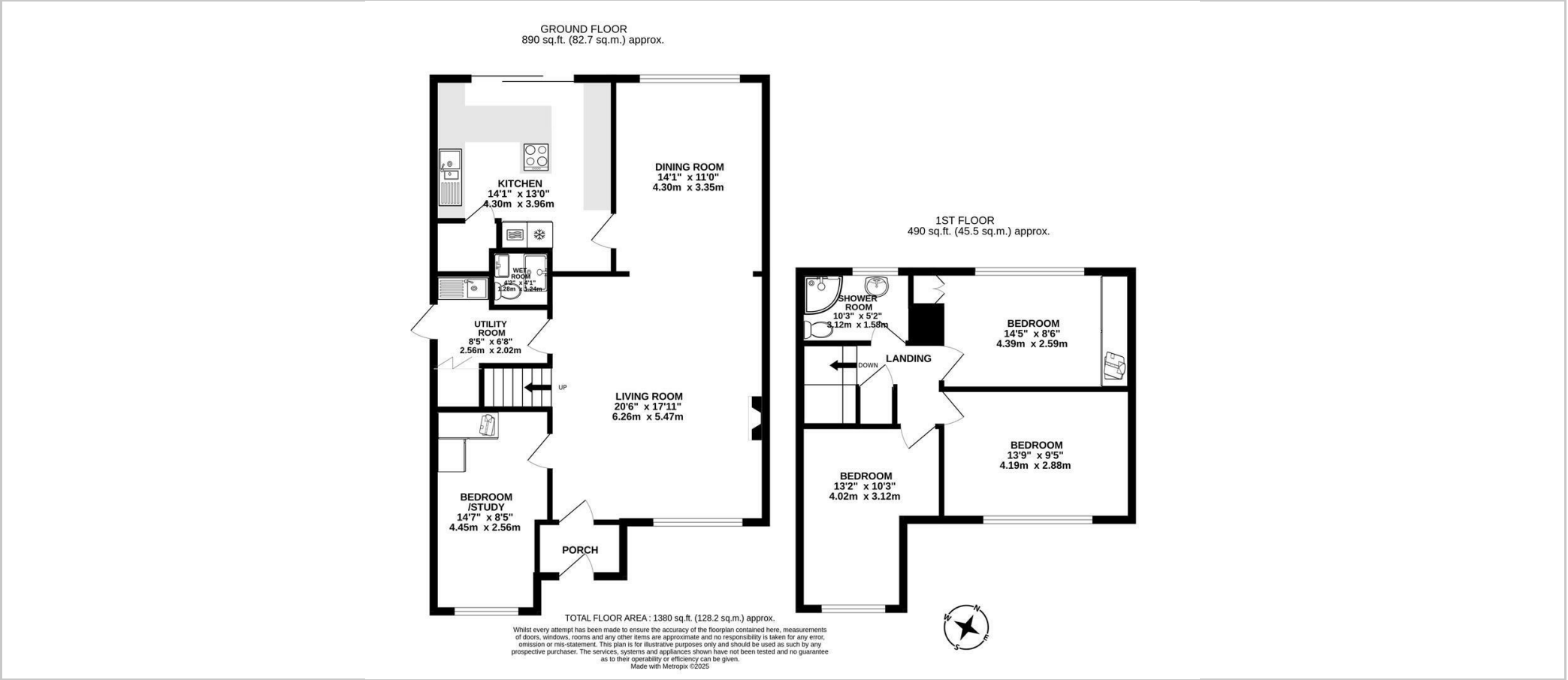




- Three bedroom extended semi-detached house
- Popular location on the east side of Hertford
- Favoured local schooling close by
- Kitchen with separate utility room and wet room
- First floor refitted shower room
- Office/Playroom
- Mature and well stocked garden to rear in excess of 90'
- Driveway to front



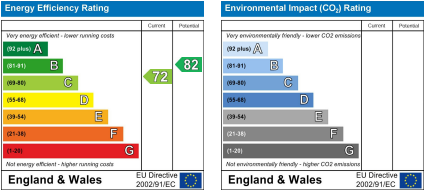
Floor Plan



Viewing

Please contact Shepherds of Hertford on 01992 551955 if you wish to arrange a viewing appointment for this property or require further information.

Energy Performance Graph



These particulars, whilst believed to be accurate are set out as a general outline only for guidance and do not constitute any part of an offer or contract. Intending purchasers should not rely on them as statements of representation of fact, but must satisfy themselves by inspection or otherwise as to their accuracy. No person in this firms employment has the authority to make or give any representation or warranty in respect of the property.

Riverside House, 6 Millbridge, Hertford, SG14 1PY
Tel: 01992 551955 Email: enquiries@shepherdsofhertford.co.uk