

shepherds
A better home
moving experience



19 Desborough Close

Bengeo, SG14 3EG

Guide Price £695,000



19 Desborough Close

Bengeo, SG14 3EG

Set in a quiet cul-de-sac in the heart of Bengeo, this four bedroom semi-detached home, offering three within the main residence plus the further fourth bedroom in the the SELF-CONTAINED ANNEXE. Providing flexible and well-balanced accommodation, ideal for families or multi-generational living- the property enjoys a large garden and backs onto woodland, with Sacombe Road Park just around the corner.

The main house features a bright and welcoming living room, separate dining room, kitchen, and a useful utility room on the ground floor. Upstairs, there are two spacious double bedrooms, a good-sized single bedroom, and a modern family bathroom with a walk-in shower.

One of the standout features of this property is the self-contained annex, providing ideal accommodation for extended family or guests. The annex comprises a double bedroom, bathroom, kitchen, and living room, all with its own private access.

Outside, the property benefits from a driveway to the front and a wider-than-average rear garden, thanks to its position within the close. The garden is a very good size, backing onto woodland and offering a pleasant, green outlook while remaining private and secure. This is a rarely available opportunity in a sought-after Bengeo location.

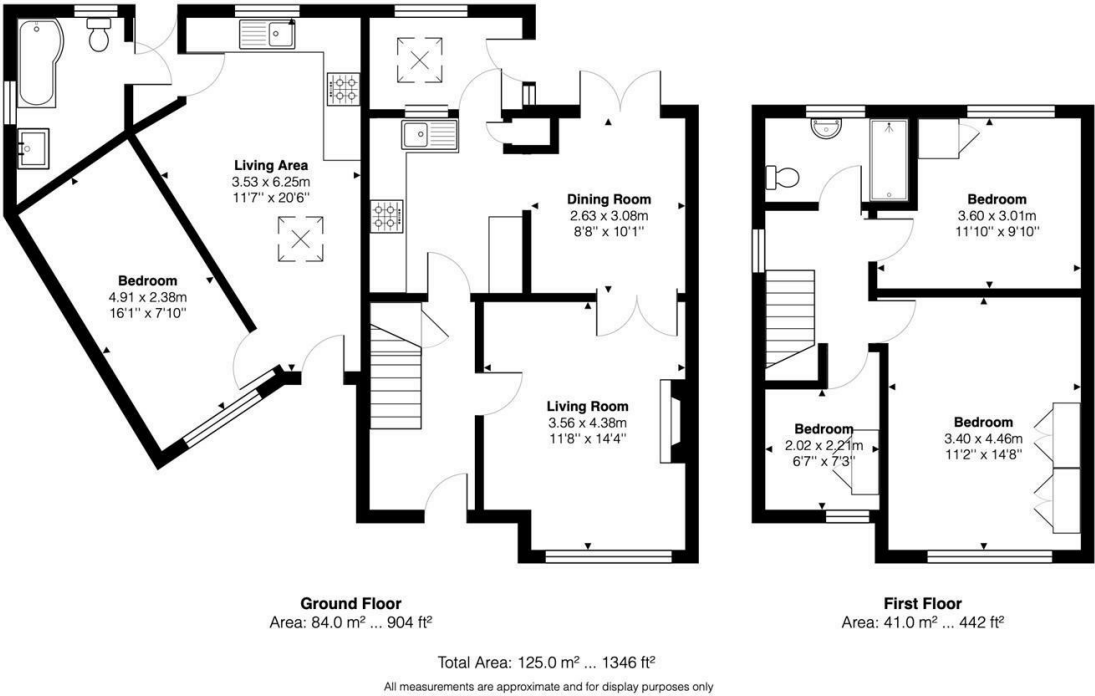




- Four bedroom semi-detached home in a quiet Bengo cul-de-sac
- Self-contained annex with kitchen, bathroom, double bedroom and living room
- Spacious living and dining rooms, plus kitchen and utility room
- Two large double bedrooms and a generous single bedroom upstairs with additional annexe bedroom
- Modern family bathroom with walk-in shower
- Wider-than-average rear garden due to its position within the close
- Garden backs onto woodland, offering a private and green outlook
- Driveway providing off-street parking
- Just around the corner from Sacombe Park and local green spaces
- Ideal for families, multi-generational living



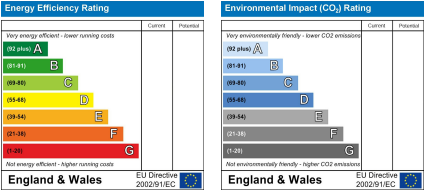
Floor Plan



Viewing

Please contact Shepherds of Hertford on 01992 551955 if you wish to arrange a viewing appointment for this property or require further information.

Energy Performance Graph



These particulars, whilst believed to be accurate are set out as a general outline only for guidance and do not constitute any part of an offer or contract. Intending purchasers should not rely on them as statements of representation of fact, but must satisfy themselves by inspection or otherwise as to their accuracy. No person in this firm's employment has the authority to make or give any representation or warranty in respect of the property.

Riverside House, 6 Millbridge, Hertford, SG14 1PY
Tel: 01992 551955 Email: enquiries@shepherdsofhertford.co.uk