

shepherds
A better home
moving experience



5 Downfield Cottages

Thundridge, SG12 0SG

Price Guide £1,100,000



5 Downfield Cottages

Thundridge, SG12 0SG

Elegant Victorian Charm Meets Idyllic Countryside Living – CHAIN FREE

Commanding a prime position with uninterrupted views over the prestigious Hanbury Manor Golf Course and sweeping open fields, this exquisite four-bedroom Victorian semi-detached residence offers timeless character, generous living space, and near total, privacy — all in a truly stunning setting.

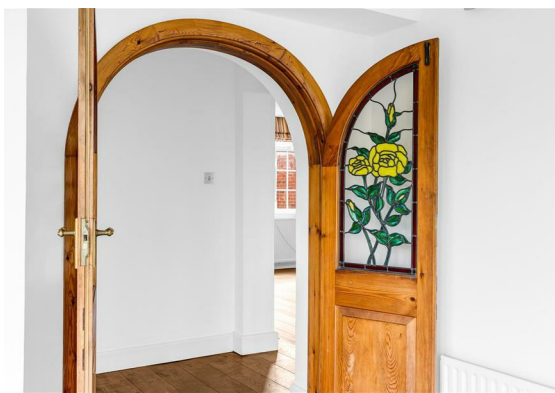
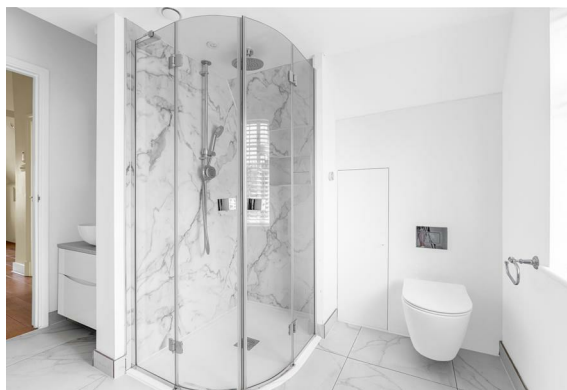
Beautifully arranged across three floors, the home blends period elegance with modern comfort. From the impressive 17' formal living room to the inviting family room and light-filled conservatory, every corner has been thoughtfully designed for both entertaining and everyday living. The kitchen is well-appointed and enhanced by a separate pantry, ideal for the culinary enthusiast.

Upstairs, the master bedroom is a serene retreat with its own en-suite, while the remaining bedrooms are well-served by a stylish family shower room. A downstairs cloakroom adds further convenience.

Offering the further benefit of a detached self contained annexe with kitchen and shower room, offering a multitude of uses.

Outside, the mature gardens create a lush, private oasis, perfect for alfresco dining or simply soaking in the peaceful surroundings whilst enjoying the panorama to the rear. A detached double garage provides ample storage and parking, and the property's secluded setting offers a rare sense of escape.

Offered chain free, this is a rare opportunity to acquire a home of distinction in one of the area's most desirable locations.





- Four bedroom Victorian semi-detached house
- Stunning views over the golf course and open fields
- OFFERED CHAIN FREE
- 17' living room
- 15' family room
- Conservatory
- Master bedroom with ensuite
- Family bathroom and ground floor cloakroom
- Self contained detached annexe with kitchen and shower room
- Large detached garage



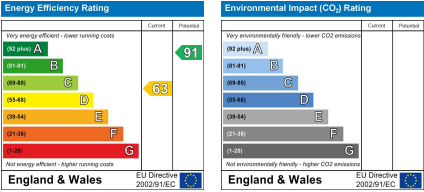
Floor Plan



Viewing

Please contact Shepherds of Hertford on 01992 551955 if you wish to arrange a viewing appointment for this property or require further information.

Energy Performance Graph



These particulars, whilst believed to be accurate are set out as a general outline only for guidance and do not constitute any part of an offer or contract. Intending purchasers should not rely on them as statements of representation of fact, but must satisfy themselves by inspection or otherwise as to their accuracy. No person in this firms employment has the authority to make or give any representation or warranty in respect of the property.

Riverside House, 6 Millbridge, Hertford, SG14 1PY
Tel: 01992 551955 Email: enquiries@shepherdsofhertford.co.uk