

shepherds

A better home
moving experience



15c St. Andrew Street
Hertford, SG14 1HZ

Guide Price £825,000



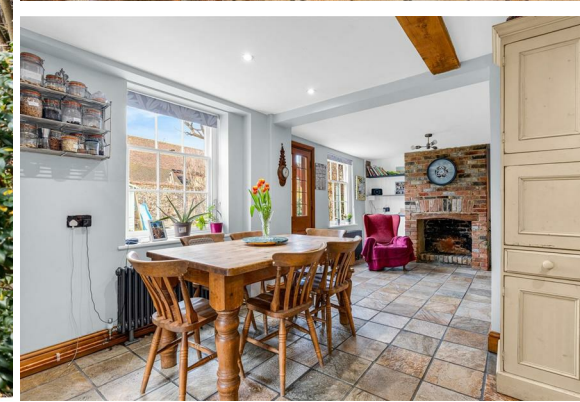
15c St. Andrew Street

Hertford, SG14 1HZ

We are pleased to present this beautifully extended and refurbished double fronted four-bedroom semi-detached period home, perfectly positioned in the historic heart of Hertford. Offering a blend of character and contemporary design, the property is within easy reach of local amenities and both rail stations.

Arranged over three floors, the ground level features a spacious 23' kitchen/family room, a versatile reception room ideal as a lounge or playroom, as well as a boot room and utility room. The first floor comprises a dual-aspect lounge, a family bathroom, and the principal bedroom. On the top floor, there are two further double bedrooms, a shower room, and charming period details, including exposed beams.

Externally, the property benefits from an allocated parking space and a private west-facing rear garden, complete with a summerhouse equipped with power and lighting.





- Prime Town Centre Location
- Beautifully Extended & Refurbished
- Spacious 23' Kitchen/Family Room
- Versatile Living Spaces
- Character Features
- West-Facing Garden & Summerhouse
- Allocated Parking
- Convenient Utility & Boot Room
- Three-Storey Layout



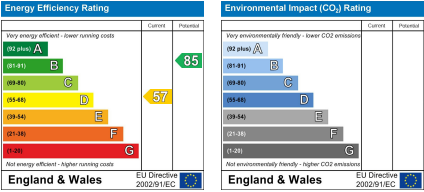
Floor Plan



Viewing

Please contact Shepherds of Hertford on 01992 551955 if you wish to arrange a viewing appointment for this property or require further information.

Energy Performance Graph



These particulars, whilst believed to be accurate are set out as a general outline only for guidance and do not constitute any part of an offer or contract. Intending purchasers should not rely on them as statements of representation of fact, but must satisfy themselves by inspection or otherwise as to their accuracy. No person in this firms employment has the authority to make or give any representation or warranty in respect of the property.

Riverside House, 6 Millbridge, Hertford, SG14 1PY
Tel: 01992 551955 Email: enquiries@shepherdsofhertford.co.uk