



10 Willow Corner

Bayford, SG13 8PN

Price Guide £650,000



10 Willow Corner

Bayford, SG13 8PN

Charming Village Retreat with Scenic Views

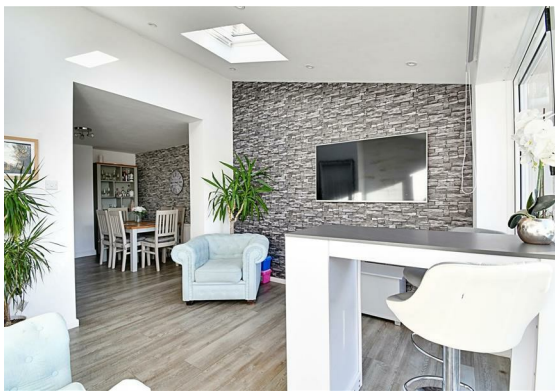
Nestled in the heart of the tranquil and highly sought-after village of Bayford, this delightful three-bedroom end terrace house offers a perfect blend of rural charm and modern living. Overlooking a picturesque green and pond to the front, and boasting stunning views over open fields to the rear, this property is a haven for those seeking peace and natural beauty.

The current vendor has thoughtfully extended the property to create a spacious 21' kitchen/diner, ideal for family gatherings and entertaining. The stunning family room, a true highlight, features bi-folding doors that seamlessly connect the indoors with the beautifully landscaped garden, offering far-reaching views that are sure to captivate.

For those who work from home, the dedicated office space provides a quiet and inspiring environment with flexibility as an additional ground floor bedroom. The first floor hosts a modern bathroom, while a convenient ground floor cloakroom adds to the practicality of this charming home. The living room exudes warmth and character with its working wood burner, perfect for cosy evenings.

Step outside to discover a raised paved patio, with steps leading down to the meticulously landscaped gardens. Well-stocked borders, a rear decked seating area with direct views over the fields, a summer house, shed, and greenhouse complete this outdoor oasis. The extension benefits from underfloor heating, ensuring comfort throughout the year.

Private residents' parking spaces provide convenience, and the property is just a 5-minute walk from Bayford train station, offering easy access to London and beyond. This home is a rare find, offering a quintessential village lifestyle with all the modern amenities you could desire. Don't miss the opportunity to make this charming retreat your own.

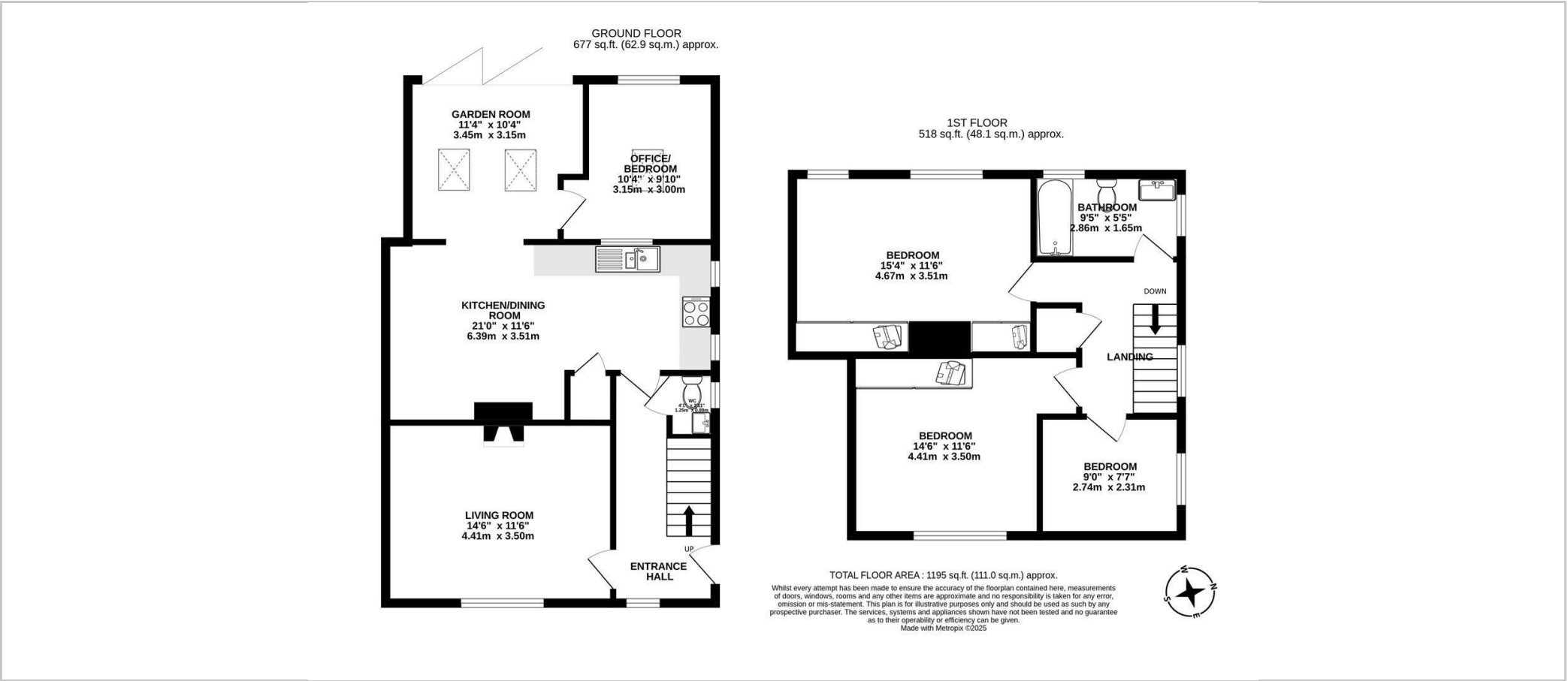




- Three bedroom extended end terrace house
- Highly sought after and rarely available village location of Bayford
- Access to local schooling and train station
- Remodelled and extended by the current vendor
- Stunning views from all aspects over open fields and green with pond to front
- Beautifully landscaped approx 130' south west facing garden to rear
- Living room with wood burner
- Spacious 21' kitchen/diner
- Family room with under floor heating and bifolding doors into the garden
- First floor bathroom and ground floor cloakroom



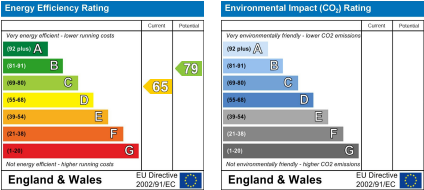
Floor Plan



Viewing

Please contact Shepherds of Hertford on 01992 551955 if you wish to arrange a viewing appointment for this property or require further information.

Energy Performance Graph



These particulars, whilst believed to be accurate are set out as a general outline only for guidance and do not constitute any part of an offer or contract. Intending purchasers should not rely on them as statements of representation of fact, but must satisfy themselves by inspection or otherwise as to their accuracy. No person in this firms employment has the authority to make or give any representation or warranty in respect of the property.

Riverside House, 6 Millbridge, Hertford, SG14 1PY
Tel: 01992 551955 Email: enquiries@shepherdsofhertford.co.uk