

shepherds  
A better home  
moving experience



Balsams 1b Hogsdell Lane

Hertford Heath, SG13 7RN

**Price Guide £585,000**





## Balsams 1b Hogsdel Lane

Hertford Heath, SG13 7RN

**SOLD BY SHEPHERDS** - Charming Bungalow with Stunning Scenic Views

Nestled on the outskirts of the picturesque and sought-after village of Hertford Heath, this delightful three-bedroom detached bungalow offers an idyllic retreat with the convenience appeal of village life. Just a stroll away, you'll find the local pub and the charming village green, perfect for leisurely afternoons and community gatherings.

Offering terrific scope throughout with accommodation to include a spacious 19' living room that seamlessly flows into the dining area, ideal for hosting family dinners or entertaining friends. The bungalow boasts a refitted shower room, complemented by an additional cloakroom, ensuring practicality and comfort for all residents.

The heart of this home lies in its connection to nature. The mature gardens to the rear are a true sanctuary, featuring a summerhouse and stunning views over open fields. For those with a green thumb, a greenhouse awaits, offering the perfect space to nurture your gardening passions.

Practicality is not overlooked, with a garage providing secure parking and additional storage space. The bungalow's location offers the best of both worlds: a tranquil village atmosphere with easy access to nearby Hertford town centre with its wide range of amenities to include two mainline train stations.

This property has the potential to be a rare gem, offering a lifestyle of peace and tranquillity in a vibrant village setting. Whether you're enjoying a morning coffee with a view, a leisurely walk to the local pub, or simply relaxing in the comfort of your spacious living room, this bungalow promises a lifestyle of comfort and charm. Don't miss the opportunity to make this enchanting home your own. Viewing is highly recommended to fully appreciate all that this exceptional property has to offer.





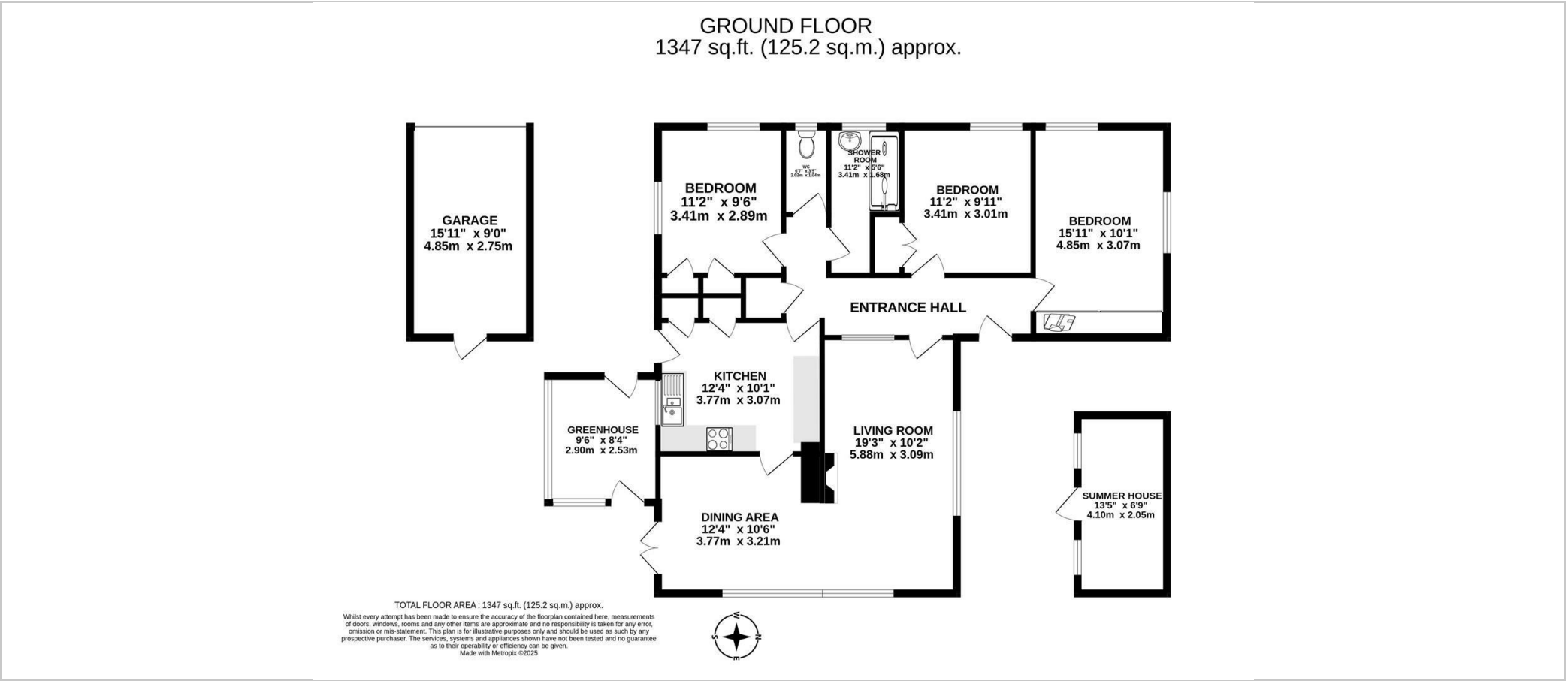


- Three bedroom detached bungalow
- Sought after village location of Hertford Heath
- Spacious 19' living room
- 12' dining area
- Refitted shower room
- Stunning views to the rear over open fields
- Mature gardens to rear with summerhouse
- Greenhouse
- Garage
- Location via What3Word: strut.needed.spine





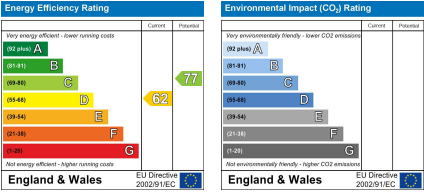
Floor Plan



Viewing

Please contact Shepherds of Hertford on 01992 551955  
if you wish to arrange a viewing appointment for this property or require further information.

Energy Performance Graph



These particulars, whilst believed to be accurate are set out as a general outline only for guidance and do not constitute any part of an offer or contract. Intending purchasers should not rely on them as statements of representation of fact, but must satisfy themselves by inspection or otherwise as to their accuracy. No person in this firm's employment has the authority to make or give any representation or warranty in respect of the property.

Riverside House, 6 Millbridge, Hertford, SG14 1PY  
Tel: 01992 551955 Email: [enquiries@shepherdsofhertford.co.uk](mailto:enquiries@shepherdsofhertford.co.uk)