



21 Becketts

Hertford, SG14 2AN

Price Guide £475,000





## 21 Becketts

Hertford, SG14 2AN

**SOLD BY SHEPHERDS** - Nestled on the west side of Hertford, this charming three-bedroom semi-detached house offers a delightful blend of comfort and convenience. With a lush green outlook to the front and the tranquil river just a stone's throw away, this home promises a serene lifestyle in a sought-after location.

Step inside to discover a spacious 15' x 15' lounge, perfect for cosy evenings with family and friends. The separate dining area provides an ideal setting for entertaining, while the adjoining conservatory bathes the space in natural light, creating a seamless connection to the outdoors.

Upstairs, the first-floor bathroom caters to the needs of a busy household, ensuring convenience for all. The property's appeal extends beyond its interiors, with an approximately 44' rear garden laid to lawn, offering a peaceful retreat for relaxation and play. The raised decked patio is a standout feature, providing a perfect spot for al fresco dining or simply soaking up the sun.

For those needing to commute or explore the surrounding areas, easy access to the A414 ensures you're well-connected to major routes. Whether you're seeking a family home or a tranquil escape, this property offers the best of both worlds.





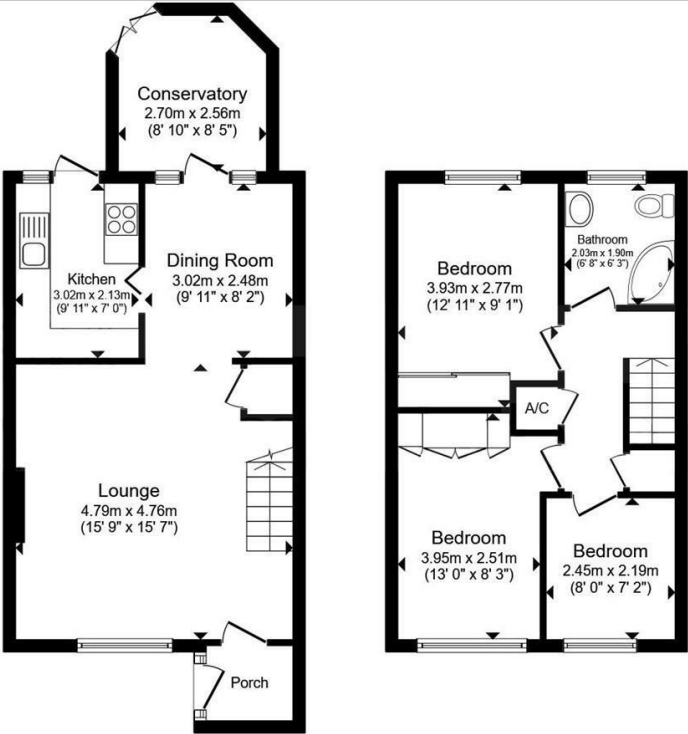


- Three bedroom semi-detached house
- Popular no through road position on the west side of Hertford
- Green to front with river
- Spacious 15' x 15' lounge with separate dining area
- Refitted contemporary style kitchen
- First floor bathroom
- Approx 44' garden to rear laid to lawn with raised decked patio





Floor Plan



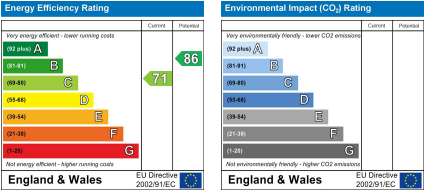
Ground Floor First Floor

Total floor area 85.0 sq. m. (915 sq. ft.) approx  
This floor plan is for illustrative purposes only. It is not drawn to scale. Any measurements, floor areas (including any total floor area), openings and orientation are approximate. No details are guaranteed, they cannot be relied upon for any purpose and they do not form part of any agreement. No liability is taken for any error, omission or misstatement. A party must rely upon its own inspection(s). Plan produced for William H Brown. Powered by www.focalagent.com

Viewing

Please contact Shepherds of Hertford on 01992 551955 if you wish to arrange a viewing appointment for this property or require further information.

Energy Performance Graph



These particulars, whilst believed to be accurate are set out as a general outline only for guidance and do not constitute any part of an offer or contract. Intending purchasers should not rely on them as statements of representation of fact, but must satisfy themselves by inspection or otherwise as to their accuracy. No person in this firm's employment has the authority to make or give any representation or warranty in respect of the property.

Riverside House, 6 Millbridge, Hertford, SG14 1PY  
Tel: 01992 551955 Email: enquiries@shepherdsofhertford.co.uk