

shepherds  
A better home  
moving experience



89 Wellington Street  
Hertford, SG14 3AN

Offers In Excess Of £399,995





## 89 Wellington Street

Hertford, SG14 3AN

Nestled in the heart of Hertford, this delightful two-bedroom Victorian terrace cottage offers a perfect blend of period charm and modern convenience. Situated within walking distance to Hertford North train station and the bustling town centre, this property is ideal for commuters and those who enjoy the vibrant local lifestyle.

As you step inside, you are greeted by a cosy living room that exudes warmth and character, perfect for relaxing evenings or entertaining guests. The kitchen/diner is thoughtfully designed, providing a practical space for culinary enthusiasts to whip up delicious meals while enjoying the company of family and friends. The layout encourages a seamless flow between cooking and dining, making it the heart of the home.

Upstairs, the property offers a first-floor bathroom with two well-proportioned bedrooms providing comfortable living spaces, each with its own unique charm, ensuring restful nights and peaceful mornings.

The allure of this property extends beyond its interiors. To the rear, a private garden awaits, offering a serene escape from the hustle and bustle of daily life. The garden is complemented by a charming brick outhouse, providing additional storage or the potential for a creative workspace.

This Victorian cottage is not just a home; it's a lifestyle choice. With its prime location, you can enjoy leisurely strolls to the town centre, where an array of shops, cafes, and restaurants await. The proximity to Hertford North train station ensures effortless commuting, connecting you to London and beyond.

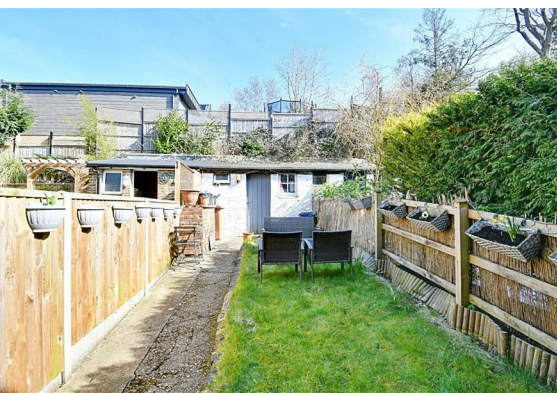
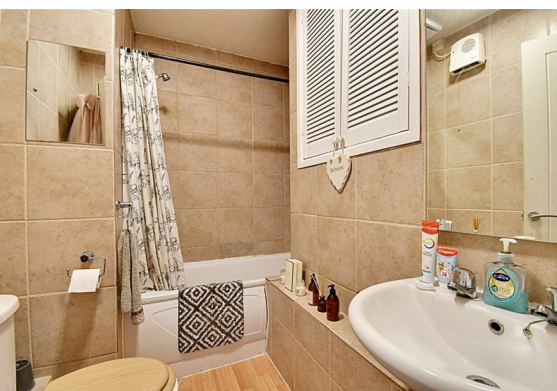
Embrace the opportunity to own a piece of Hertford's history, where modern living meets timeless elegance. This cottage is a rare find, promising a lifestyle of comfort, convenience, and charm.





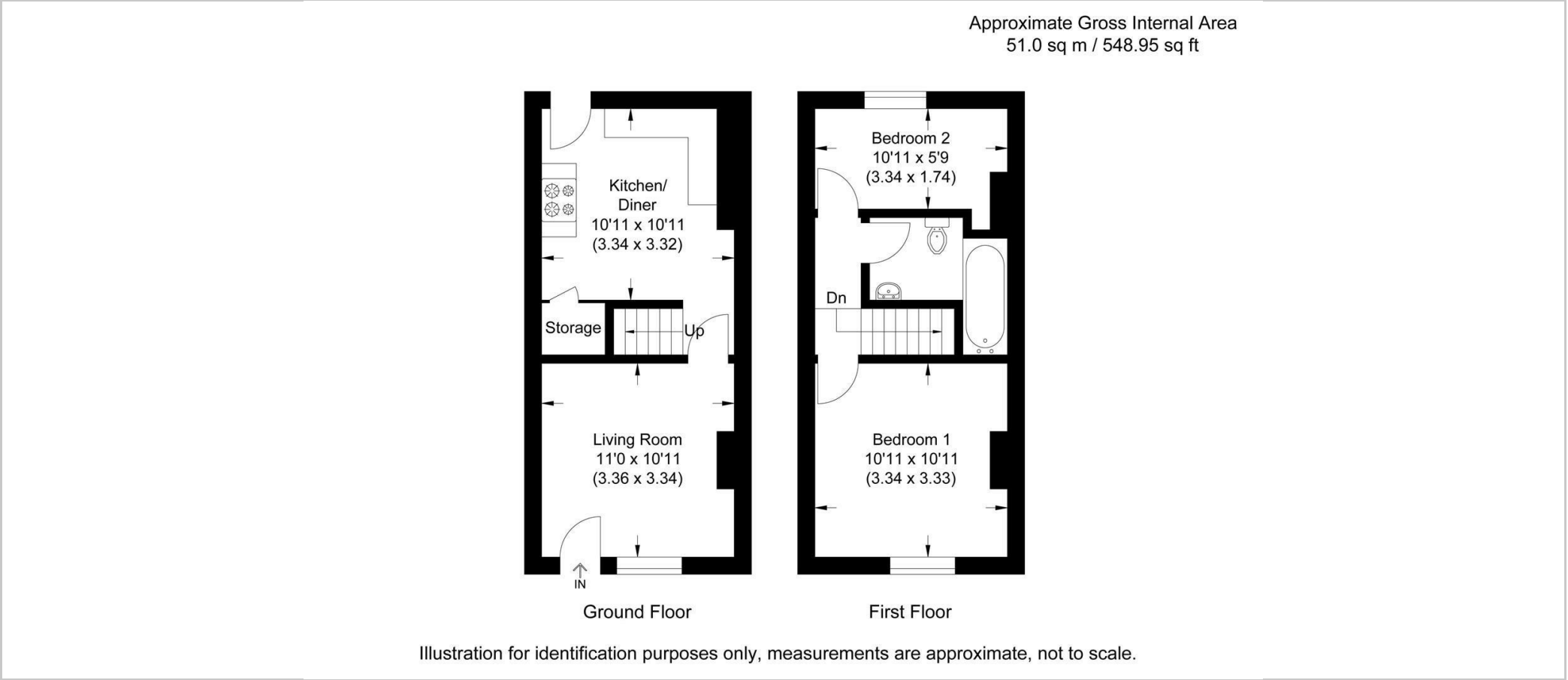


- Two bedroom Victorian terrace cottage
- Walking distance to Hertford North train station and town centre
- Living Room
- Kitchen/Diner
- First floor family bathroom
- Private garden to rear
- Brick outhouse
- Location via What3Words: flats.detect.goad





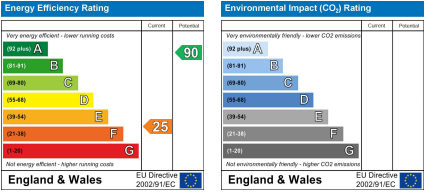
Floor Plan



Viewing

Please contact Shepherds of Hertford on 01992 551955 if you wish to arrange a viewing appointment for this property or require further information.

Energy Performance Graph



These particulars, whilst believed to be accurate are set out as a general outline only for guidance and do not constitute any part of an offer or contract. Intending purchasers should not rely on them as statements of representation of fact, but must satisfy themselves by inspection or otherwise as to their accuracy. No person in this firms employment has the authority to make or give any representation or warranty in respect of the property.

Riverside House, 6 Millbridge, Hertford, SG14 1PY  
Tel: 01992 551955 Email: enquiries@shepherdsofhertford.co.uk