

shepherds  
A better home  
moving experience



58 Orchard Road

Tewin, AL6 0HN

Price Guide £1,350,000





## 58 Orchard Road

Tewin, AL6 0HN

Nestled on the outskirts of the picturesque and sought-after Tewin Village, this chain-free and individual four-bedroom character detached residence offers an idyllic blend of rural charm and convenience just a five minute drive from Welwyn North train station. Spanning over 2000 sq ft, this property is perfect for families seeking ample space and a serene lifestyle.

Offering scope for some updating throughout, the ground floor boasts a generous entrance hall, 18' kitchen/dining room, complete with a separate utility room, making it ideal for both everyday living and entertaining. The 19' living room provides a cosy retreat, while the 17' family room offers additional space for relaxation or play. A convenient downstairs cloakroom completes this level.

The first floor is equally impressive, featuring a 22' master bedroom with an en-suite shower room and dressing area, ensuring a private sanctuary for the homeowners. Three further well-proportioned bedrooms share a modern family bathroom, catering to the needs of a growing family.

Externally, the property truly shines. The mature, well-stocked and west-facing gardens extend to over 150', providing a tranquil outdoor space perfect for gardening enthusiasts or those who simply enjoy the outdoors. The garden's expansive lawn and mature trees offer a private and peaceful setting and back directly, with ready access, on to fields.

Additional features include a garage and driveway with ample off-street parking, ensuring convenience for multiple vehicles. The property offers a secluded approach, enhancing its exclusive feel.

Tewin itself features two welcoming pubs and store, making it a delightful place to call home. With its blend of spacious interiors, beautiful gardens, peace and village amenities, this property on Orchard Road is a rare find for those wanting to dip in to a delightful rural existence but with many amenities within a ready striking distance.





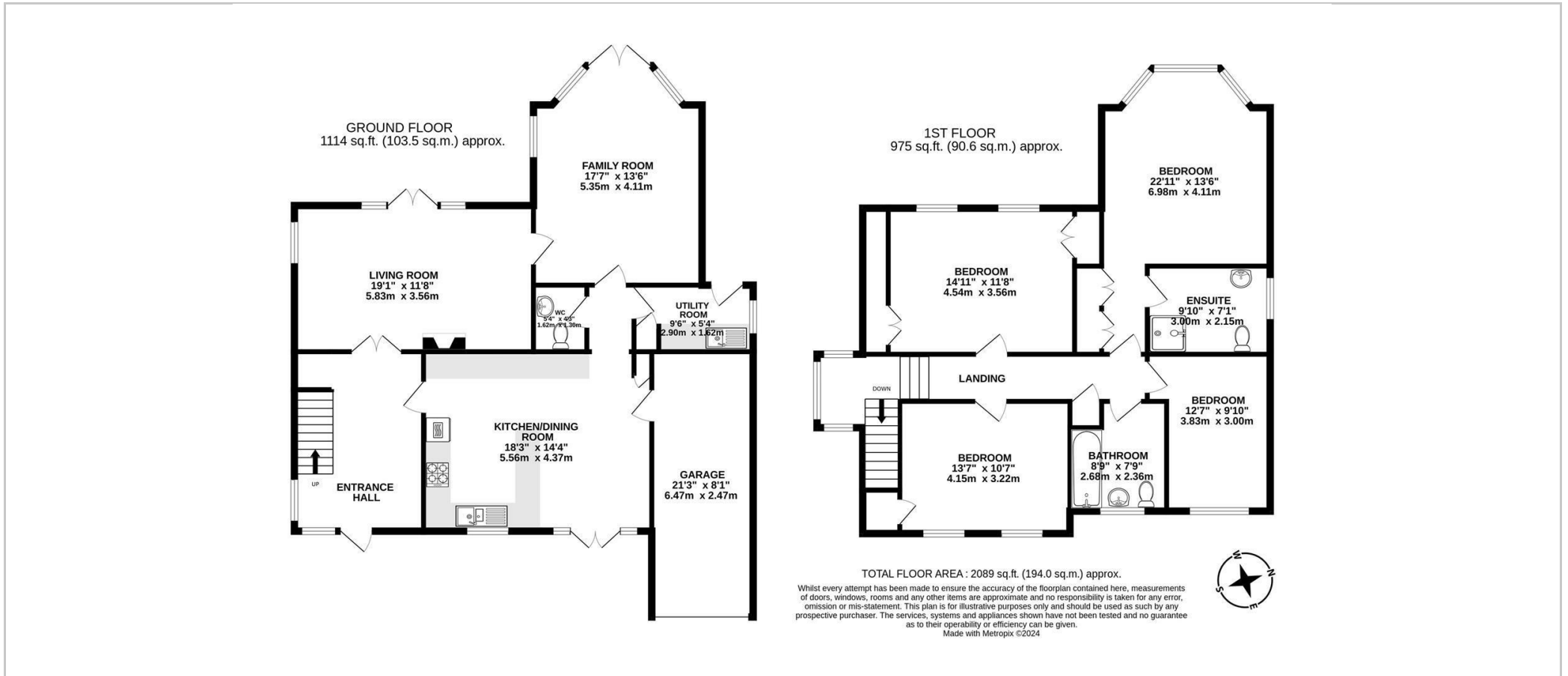


- Four bedroom detached house
- OFFERED CHAIN FREE
- Popular village location with two pubs and local shop
- Spacious 19' living room
- 17' family room with feature bay window overlooking gardens
- 18' kitchen/dining room with separate utility room
- Main family bathroom plus en-suite to the master bedroom
- Downstairs cloakroom
- Stunning mature gardens to rear in excess of 150'
- Extensive private driveway approaching house with ample off street parking and garage





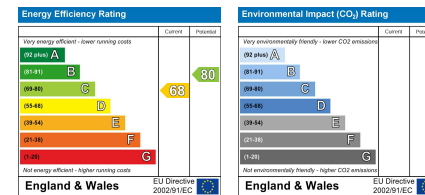
## Floor Plan



## Viewing

Please contact Shepherds of Hertford on 01992 551955 if you wish to arrange a viewing appointment for this property or require further information.

## Energy Performance Graph



These particulars, whilst believed to be accurate are set out as a general outline only for guidance and do not constitute any part of an offer or contract. Intending purchasers should not rely on them as statements of representation of fact, but must satisfy themselves by inspection or otherwise as to their accuracy. No person in this firm's employment has the authority to make or give any representation or warranty in respect of the property.

Riverside House, 6 Millbridge, Hertford, SG14 1PY  
Tel: 01992 551955 Email: enquiries@shepherdsfhertford.co.uk