

shepherds

A better home  
moving experience



4 Waterdale

Hertford, SG13 8DU

Price Guide £550,000



## 4 Waterdale

Hertford, SG13 8DU

**SOLD BY SHEPHERDS** - Welcome to a superb family home, nestled in the tranquil and highly sought-after south side riverside cul-de-sac. This extended, remodelled, and much improved property offers an exceptional living experience, perfectly blending modern comforts with serene surroundings.

Step inside to discover a spacious and inviting atmosphere. The large living room, provides the perfect setting for family gatherings and cosy evenings. The good-sized and attractive kitchen is a culinary enthusiast's delight, offering ample space for meal preparation.

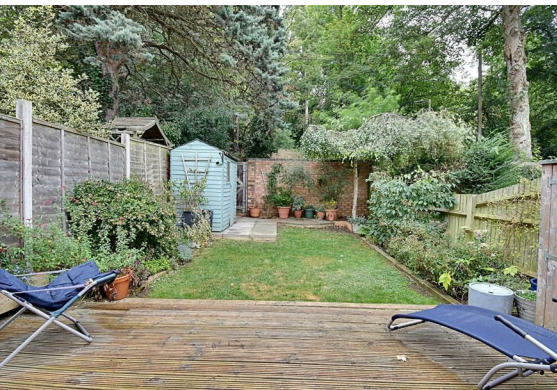
For added convenience, the property features a cloakroom, ensuring practicality for busy households. The garden room, a delightful extension of the living space, invites you to unwind and enjoy the lush, leafy backdrop that frames gardens to the rear and offering a peaceful retreat, ideal for relaxation and outdoor entertaining. The leafy surroundings create a sense of seclusion and tranquillity, making it a perfect oasis for nature lovers.

The property boasts its own driveway, providing an EV charger, and is situated in a peaceful cul-de-sac 10 minutes walk from town and with convenience store and bus stop just a minute away.

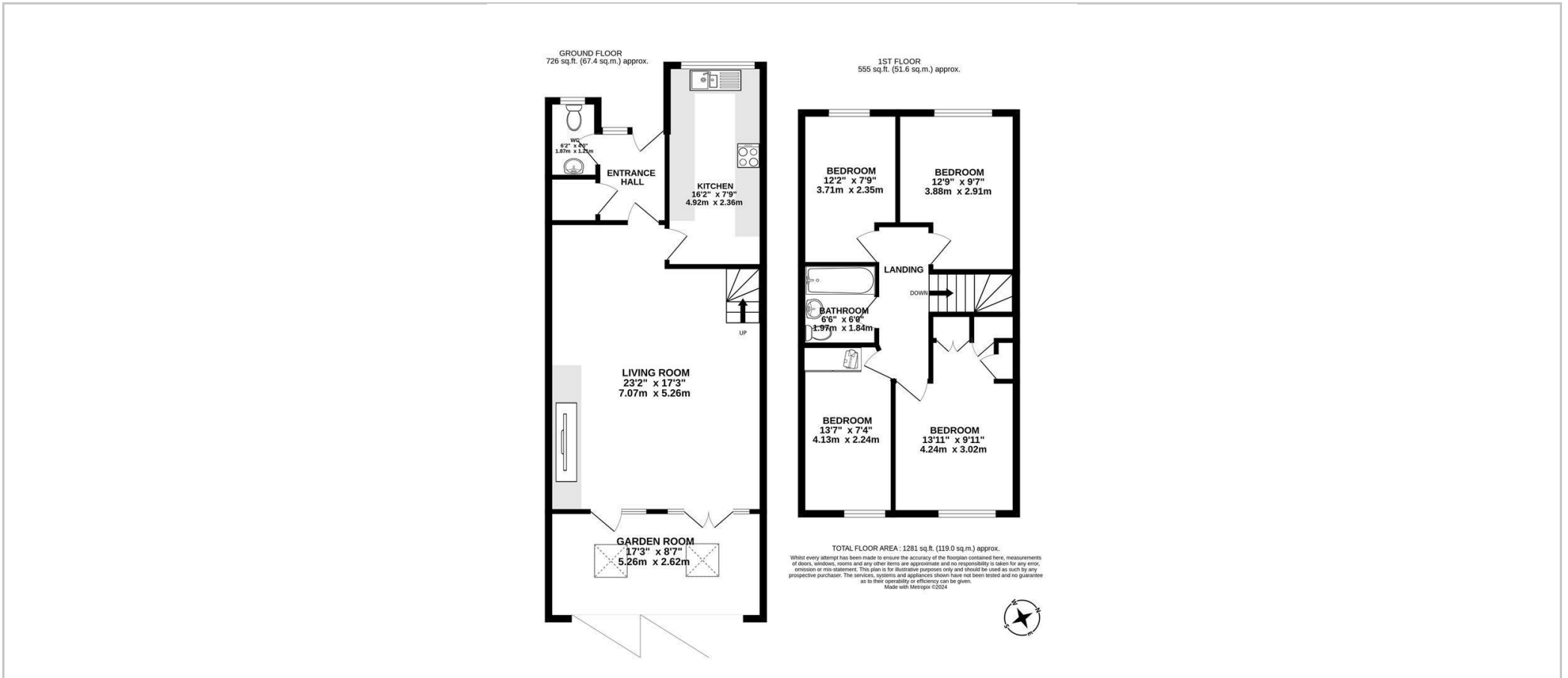




- Four Bedroom Staggered terraced
- Extended and Remodelled
- Cloakroom
- Attractive Kitchen
- Large Living Room
- Garden Room
- Double Glazing
- Off Road Parking
- Peaceful and secluded Gardens
- Popular South-side Cul de Sac



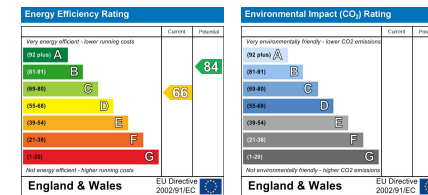
## Floor Plan



## Viewing

Please contact Shepherds of Hertford on 01992 551955 if you wish to arrange a viewing appointment for this property or require further information.

## Energy Performance Graph



These particulars, whilst believed to be accurate are set out as a general outline only for guidance and do not constitute any part of an offer or contract. Intending purchasers should not rely on them as statements of representation of fact, but must satisfy themselves by inspection or otherwise as to their accuracy. No person in this firm's employment has the authority to make or give any representation or warranty in respect of the property.

Riverside House, 6 Millbridge, Hertford, SG14 1PY  
Tel: 01992 551955 Email: enquiries@shepherdsfhertford.co.uk