

shepherds

A better home
moving experience



50 The Briars

Hertford, SG13 7TR

Price Guide £390,000



50 The Briars

Hertford, SG13 7TR

Welcome to The Briars, an exquisite two double bedroom end-terrace home nestled within the prestigious Foxholes development. This property epitomises contemporary living, offering an exceptional blend of style, comfort, and convenience. Located within the highly desirable SG13 catchment area, this home is perfect for families and professionals alike.

Step inside to discover a thoughtfully designed open-plan living space that seamlessly integrates modern aesthetics with functional living. Boasting a modern refitted kitchen adjoining the living area creating a warm and inviting atmosphere for both relaxation and entertaining.

The property boasts two generously sized double bedrooms, each offering ample storage and a tranquil retreat at the end of the day. Featuring a refitted modern bathroom suite and with a convenient downstairs cloakroom adding to the home's practicality.

Outside, the private low maintenance garden provides a serene escape, perfect for alfresco dining, gardening, or simply unwinding in the fresh air. The property also benefits from an allocated parking space, ensuring hassle-free parking, along with ample visitors' parking for your guests.

Situated in a prime location, The Briars offers easy access to excellent local schools, making it an ideal choice for families. The Foxholes development is renowned for its community spirit and well-maintained surroundings, providing a safe and welcoming environment.

Don't miss the opportunity to make this stunning property your new home. Contact us today to arrange a viewing and experience the exceptional lifestyle that The Briars has to offer.

Entrance:

Kitchen Area:
12'6 x 11'3 (3.81m x 3.43m)

Living Area:
12'6 x 12'1 (3.81m x 3.68m)

First Floor:

Bedroom One:
12'6 x 8'5 (3.81m x 2.57m)

Bedroom Two:
12'6 x 8'3 (3.81m x 2.51m)

Bathroom:
6'8 x 5'9 (2.03m x 1.75m)

Rear Garden:
approx 25'11" (approx 7.9)

Allocated Parking:

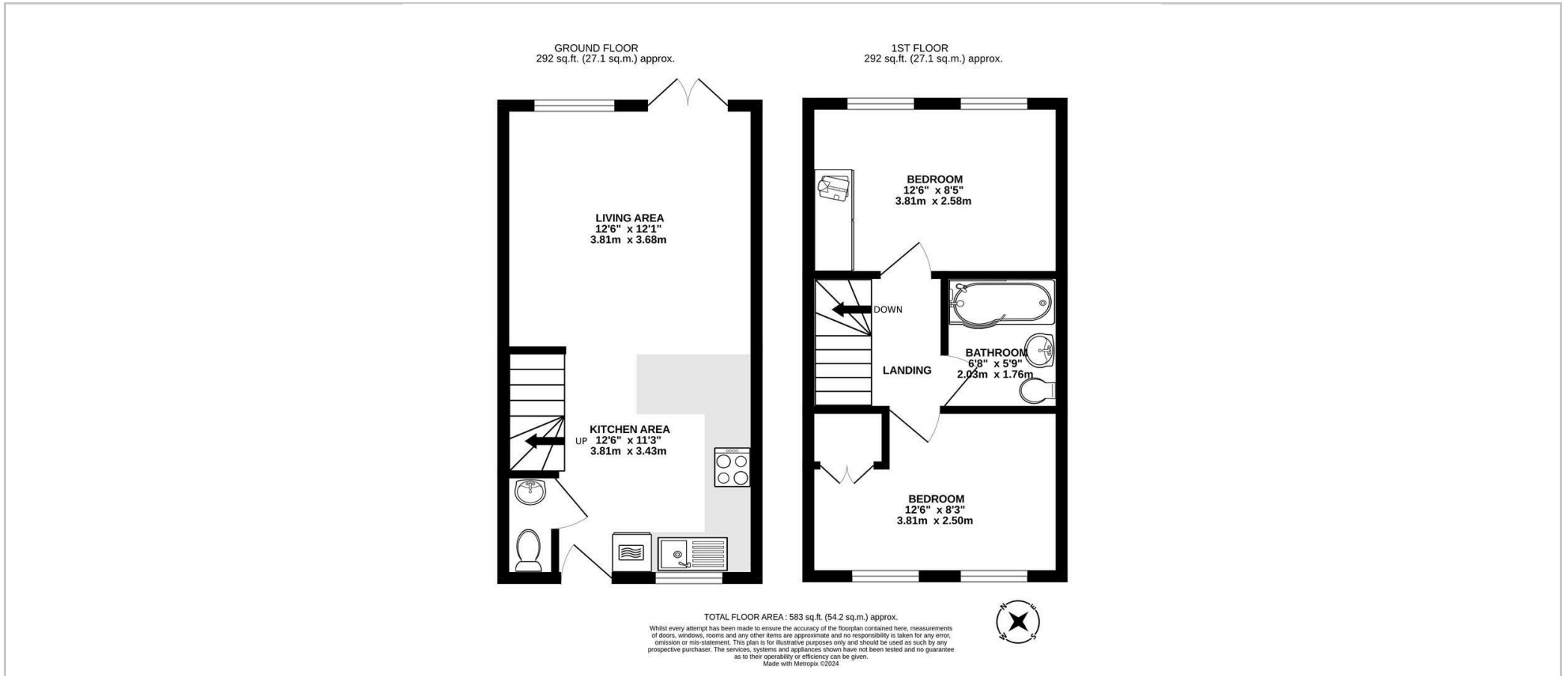




- Two double bedroom end terrace house
- Remodelled throughout by the current vendor
- Contemporary style open plan living
- Modern gloss white kitchen
- Refitted bathroom
- Allocated parking
- Popular Foxholes development



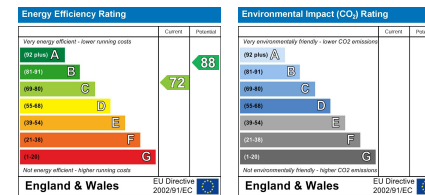
Floor Plan



Viewing

Please contact Shepherds of Hertford on 01992 551955 if you wish to arrange a viewing appointment for this property or require further information.

Energy Performance Graph



These particulars, whilst believed to be accurate are set out as a general outline only for guidance and do not constitute any part of an offer or contract. Intending purchasers should not rely on them as statements of representation of fact, but must satisfy themselves by inspection or otherwise as to their accuracy. No person in this firm's employment has the authority to make or give any representation or warranty in respect of the property.

Riverside House, 6 Millbridge, Hertford, SG14 1PY
Tel: 01992 551955 Email: enquiries@shepherdsfhertford.co.uk