

shepherds

A better home  
moving experience



## 100 Cowper Crescent

Bengeo, SG14 3EB

Price Guide £525,000





# 100 Cowper Crescent

Bengeo, SG14 3EB

Price Guide £525,000



Front door into:

## Entrance Hall:

Cupboards, access to loft, radiators, coving and doors to:

## Kitchen:

11'0 x 8'0 (3.35m x 2.44m)

Fitted with a range of base and wall mounted units with contrasting roll edge worksurface incorporating one and half bowl sink with mixer tap and drainer, four ring hob, appliance space for fridge, freezer and washing machine, wall mounted boiler, UPVC double glazed windows to front and doors opening to rear garden.

## Living Room:

17'6 x 10'10 (5.33m x 3.30m)

UPVC double glazed window to side, door to rear garden, fireplace, coving and radiator.

## Bedroom One:

13'0 x 10'10 (3.96m x 3.30m)

UPVC double glazed window to side and radiator.

## Bedroom Two:

11'9 x 8'9 (3.58m x 2.67m)

UPVC double glazed window to side and radiator.

## Garden:

approx 52'5" (approx 16m)

Sunny West facing garden with patio and leading to lawn area enclosed by panel fencing, mature tree and plant borders, outside tap and light, shed and pedestrian gated side access.

## Garage:

17'4 x 9'7 (5.28m x 2.92m)

Up and over door with power and light, window to rear.

## Driveway:

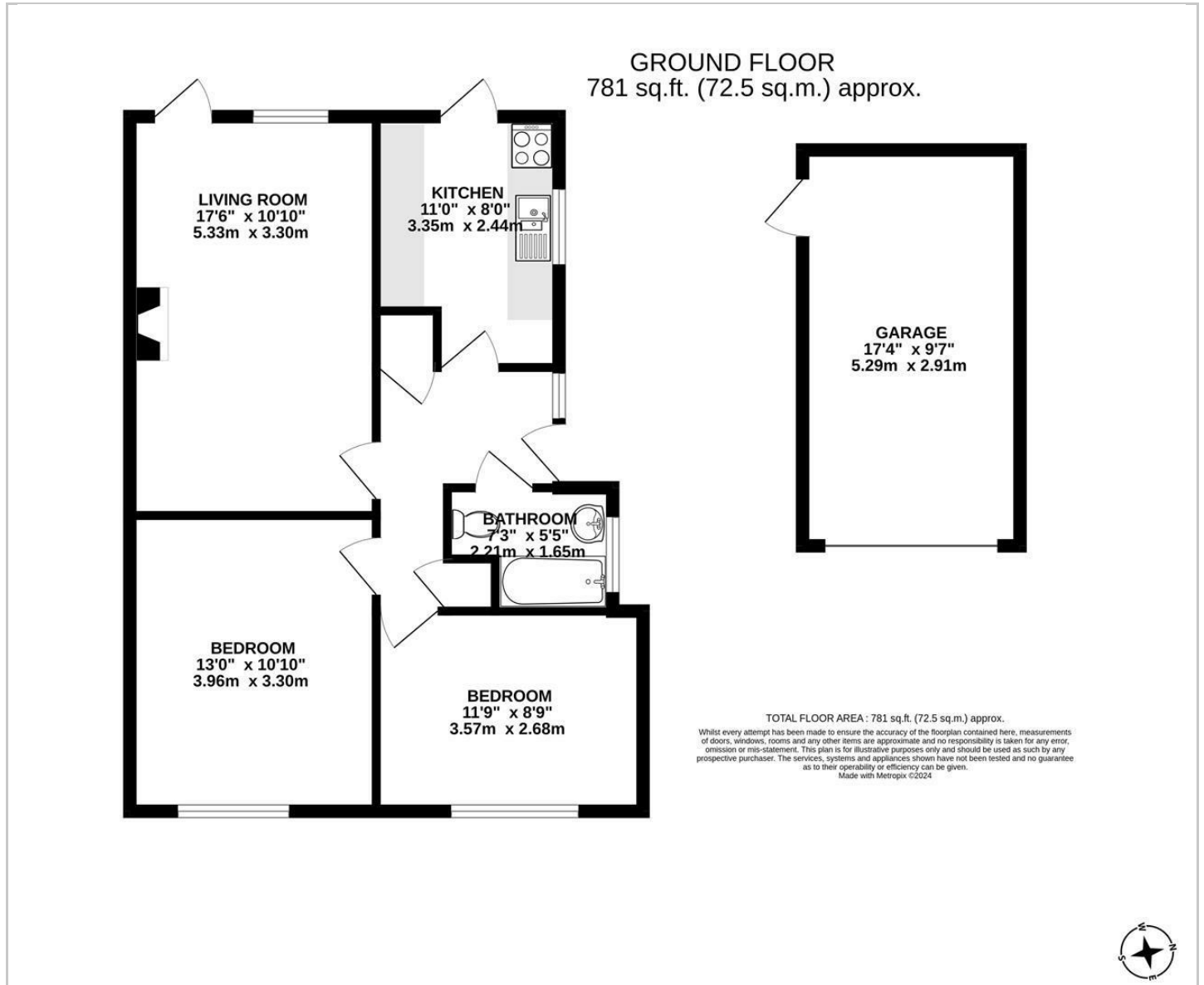
Providing off street parking.







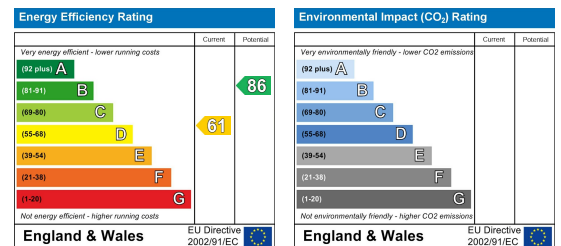
## Floor Plan



## Viewing

Please contact Shepherds of Hertford on 01992 551955 if you wish to arrange a viewing appointment for this property or require further information.

## Energy Performance Graph



These particulars, whilst believed to be accurate are set out as a general outline only for guidance and do not constitute any part of an offer or contract. Intending purchasers should not rely on them as statements of representation of fact, but must satisfy themselves by inspection or otherwise as to their accuracy. No person in this firm's employment has the authority to make or give any representation or warranty in respect of the property.