

shepherds

A better home
moving experience



Flat 6 Cambridge House Bluecoat Avenue

Hertford, SG14 1PB

Price Guide £279,000



Flat 6 Cambridge House Bluecoat Avenue

Hertford, SG14 1PB

Price Guide £279,000



Communal Entrance:

Access via secure video entry phone with stairs to second floor and private front door into:

remaining.

Ground Rent - £150 per annum

Service Charge - £2,051.20 per annum

Entrance Hall:

Radiator, wood flooring and doors to:

Living Room/Kitchen

19'0 x 12'3 (5.79m x 3.73m)

Wood flooring and comprising of:

Kitchen:

Fitted with a range of base and wall mounted units with contrasting worksurface incorporating single bowl sink with mixer tap, built in oven with separate four ring gas hob and extractor fan above, built in dishwasher, washing machine, fridge and freezer and window to rear.

Living Room:

Radiator and window to front.

Bedroom:

12'6 x 12'4 (3.81m x 3.76m)

Window to front and radiator.

Bathroom:

9'11 x 6'10 (3.02m x 2.08m)

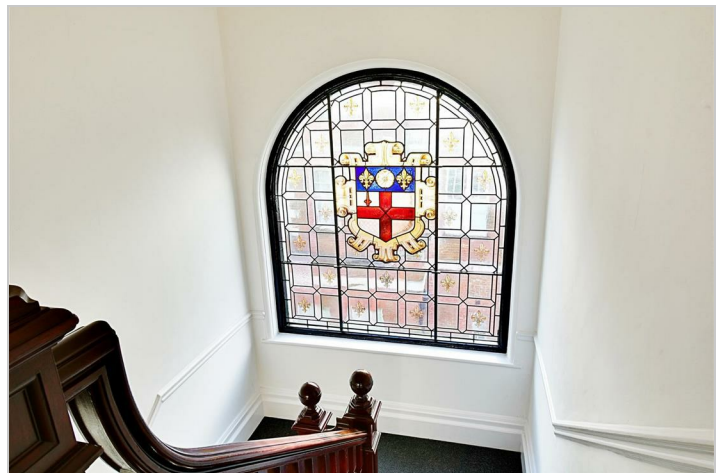
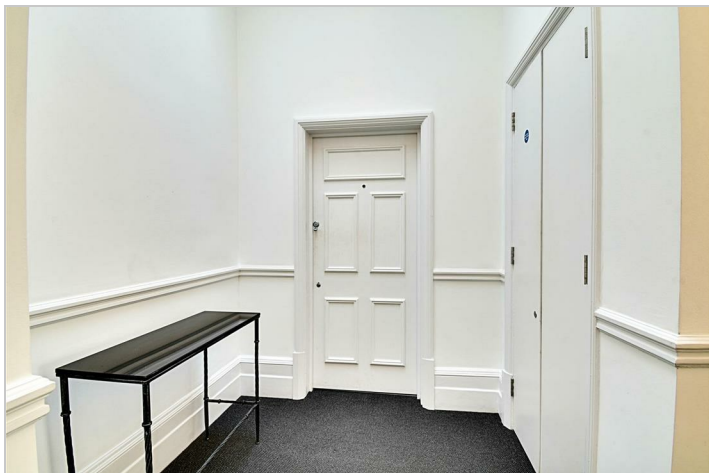
Low level WC, pedestal wash hand basin with mixer tap, panel enclosed bath with mixer tap, walk in shower with rainfall shower head, chrome heated towel rail and window to front.

Allocated parking:

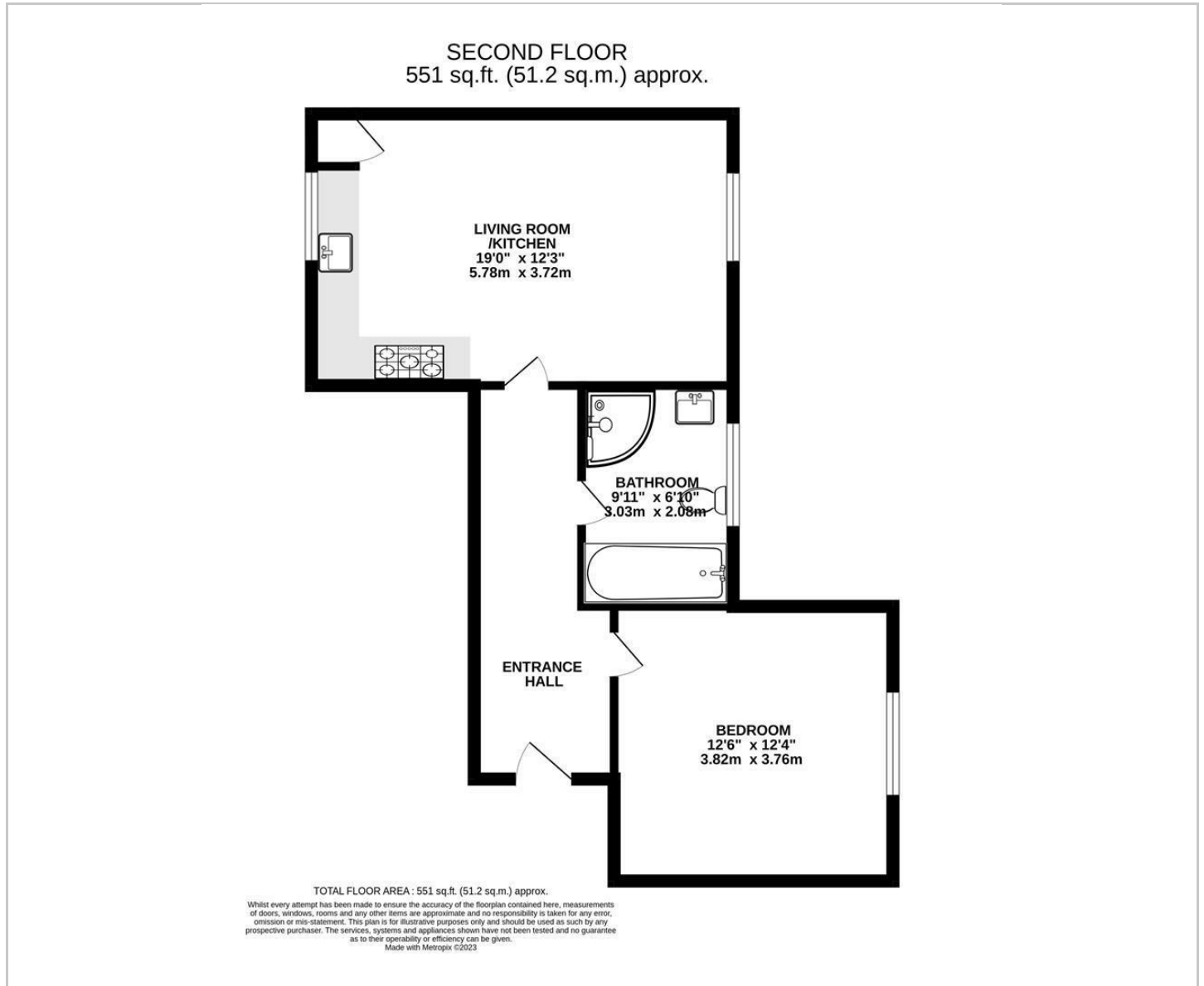
Allocated parking for one car.

Tenure:

Leasehold. 125 years from 2015. 115 years



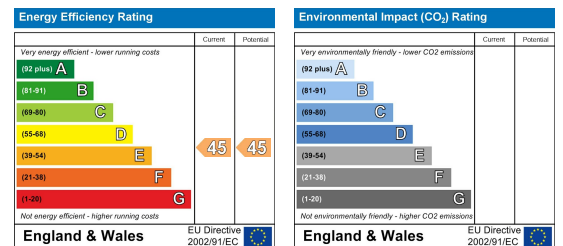
Floor Plan



Viewing

Please contact Shepherds of Hertford on 01992 551955 if you wish to arrange a viewing appointment for this property or require further information.

Energy Performance Graph



These particulars, whilst believed to be accurate are set out as a general outline only for guidance and do not constitute any part of an offer or contract. Intending purchasers should not rely on them as statements of representation of fact, but must satisfy themselves by inspection or otherwise as to their accuracy. No person in this firm's employment has the authority to make or give any representation or warranty in respect of the property.