

Dunstable Office:

01582 477 077



HOUSEHOLD
estate agents

Residential Sales • Property Management • Lettings



3 Grange Walk, Toddington, LU5 6EZ

Price £650,000



3 Grange Walk, Toddington, LU5 6EZ

Located in a Private Road of just three houses, this four bedroom detached home is ideally placed for the highly rated local schools, the M1 (Junction 11a for South and Junction 12 for the North) and Harlington train station. This lovely family home has the added benefit of a double garage and large driveway providing off road parking for several vehicles. The accommodation comprises entrance porch, cloakroom, living room, conservatory, dining room, kitchen and utility to the ground floor, with En suite to bedroom One, three further bedrooms and bathroom. Outside there is a wrap around garden with useful storage area. Offered with NO UPPER CHAIN.



Porch

Cloakroom

Entrance Hall

Living Room

21'0" x 10'9" (6.41m x 3.27m)

Conservatory

11'10" x 10'10" max (3.61m x 3.30m max)

Dining Room

12'3" x 9'6" (3.73m x 2.90m)

Kitchen

13'5" x 10'3" (4.09m x 3.13m)





Utility

8'10" x 6'4" (2.69m x 1.93m)

Landing

Bedroom 1

13'0" x 8'9" (3.96m x 2.66m)

En-suite Shower Room

Bedroom 2

8'7" x 11'3" (2.61m x 3.42m)

Bedroom 3

7'11" x 9'10" (2.41m x 3.00m)

Bedroom 4

7'5" x 9'10" (2.26m x 3.00m)

Bathroom

Outside

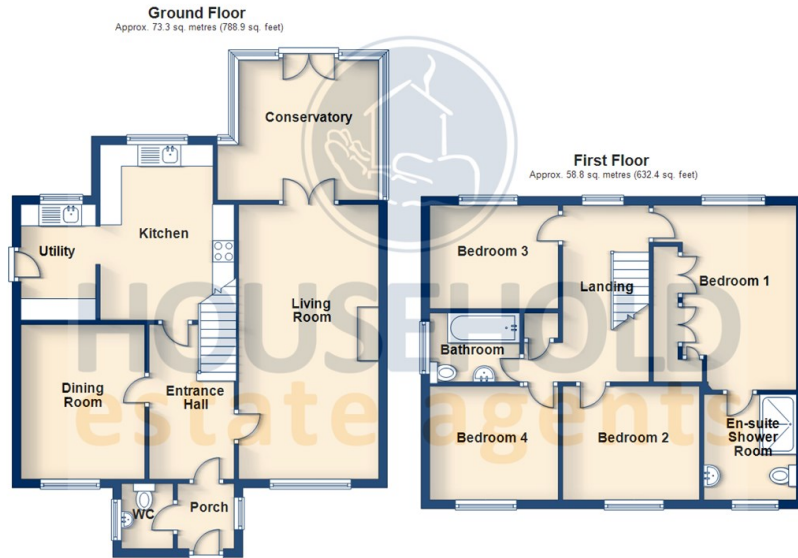
Rear and Side garden

Garage

18'5" x 19'0" (5.61m x 5.79m)

Driveway

Floor Plan



Total area: approx. 132.0 sq. metres (1421.3 sq. feet)

Floorplans are for illustrative purposes only, are not to scale and should be viewed with this in mind. Whilst every attempt is made to ensure the accuracy, all measurements, positioning, fixtures, fittings and any other data shown are an approximate interpretation. Household Estate Agents (Dunstable) Ltd will not be held liable or responsible for any error, omission, miss-statement or use of any data shown on the final floorplan. Plan produced using PlanUp.

Viewing

Please contact our Dunstable - Sales Office on 01582 477 077 if you wish to arrange a viewing appointment for this property or require further information.

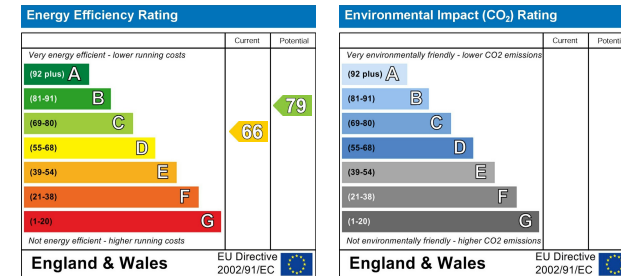
address: 15b High Street North
Dunstable, Beds LU6 1HX
telephone: 01582 477 077
email: dunstable@house-hold.co.uk
website: www.house-hold.co.uk

Additional Office: **Toddington:** 2-4 High Street
- 01525 877 771

Area Map



EPC



The Property Experts with the Personal Touch

MISDESCRIPTIONS ACT: Household Estate Agents Ltd. For themselves and for the vendors of this property, whose agents they are, give notice that the particulars are set out as a general outline only for the guidance of intending purchasers and do not constitute or constitute part of any offer of contract, All descriptions, dimensions references to the condition and necessary permissions for use and occupation and other details are given without responsibility, and the intending purchasers should not rely upon them as statements or representations of fact but must satisfy themselves by inspection or otherwise as to their correctness. No person in the employment of Household Estate Agents Limited has any authority to give or make any representation or warranty whatsoever in relation to this property.