

Mary Neuner Road, N8

£550 Per week

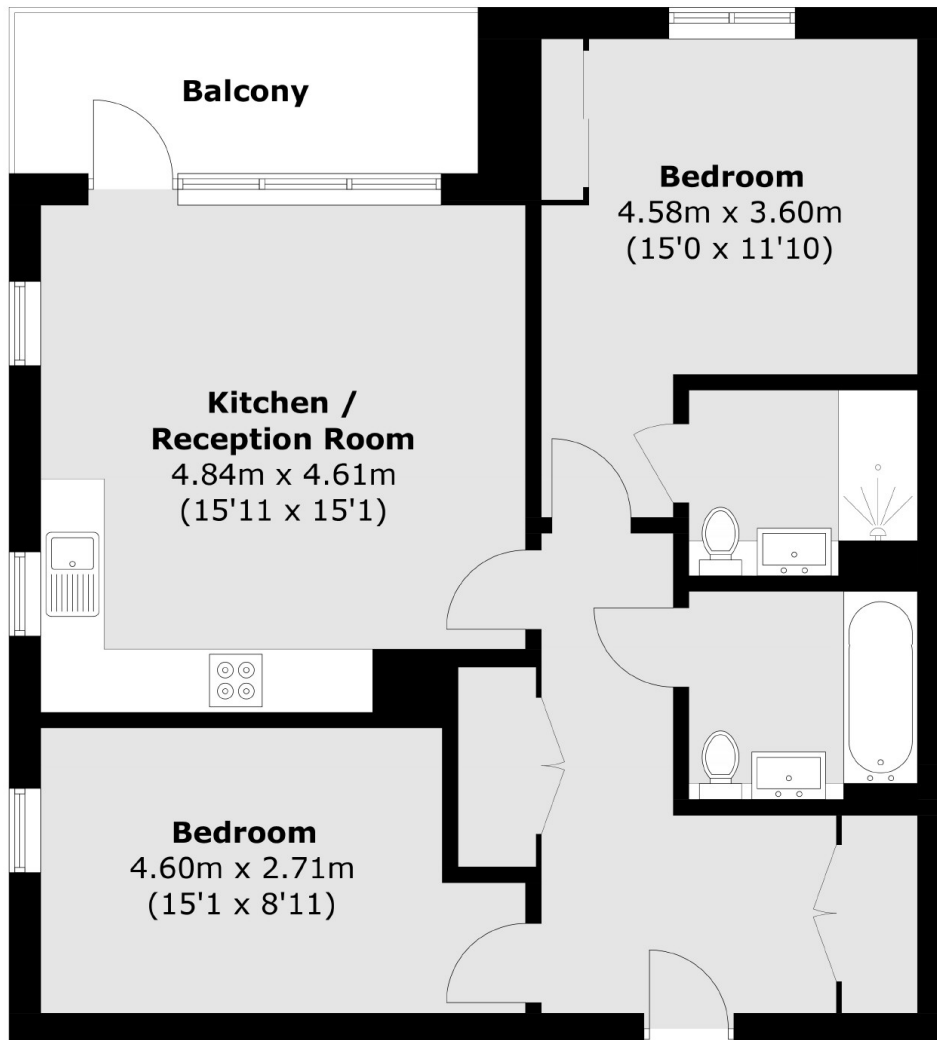
A newly built apartment on Mary Neuner Road. This apartment features an open-plan kitchen and reception area with direct access to a large private balcony, two double bedrooms, and ample storage. The property has access to a state-of-the-art gym, swimming pool, steam room, sauna, and treatment area.

Mary Neuner Road is just off Turnpike Lane where you will find a range of amenities including shops, cafe's and bars.

Features

- Two Double Bedrooms
- Two Bathrooms
- Private Balcony
- 24hr Concierge
- Residents Lounge
- Part Of A Regeneration Area

Mary Neuner Road, London, N8



Total area (approx.): 69.8 sq. m (751.3 sq. ft)
Balcony: 6.7 sq. m (72.1 sq. ft)