



Harringay Road, N15

£475,000

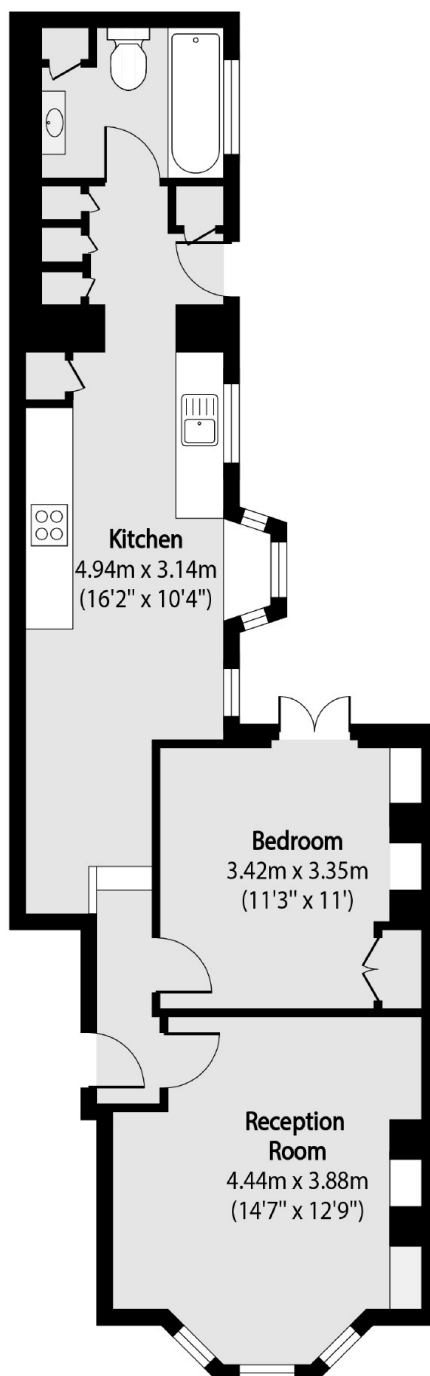
A beautifully presented one-bedroom ground floor garden flat measuring approximately 586 sq.ft. The property benefits from a good-sized reception room, a modern kitchen with an alcove dinner area and a southeast facing garden.

Harringay Road is a quiet road conveniently situated near a selection of local restaurants, coffee shops and eateries. Additionally, the proximity to Turnpike Lane Underground Tube Station, Haringey Green Lanes Overground and Hornsey Station makes it easy for commuting. The green open spaces of Lordship Recreation Ground and Finsbury Park are also close by.

Features

- Period Conversion
- Ground Floor
- One Bedroom
- Private Garden
- Leasehold
- Great Transport Links

Harringay Road, London, N15



Total area (approx): 54.44 sq m (586 sq. ft)