



Upper Tollington Park, N4

£575,000

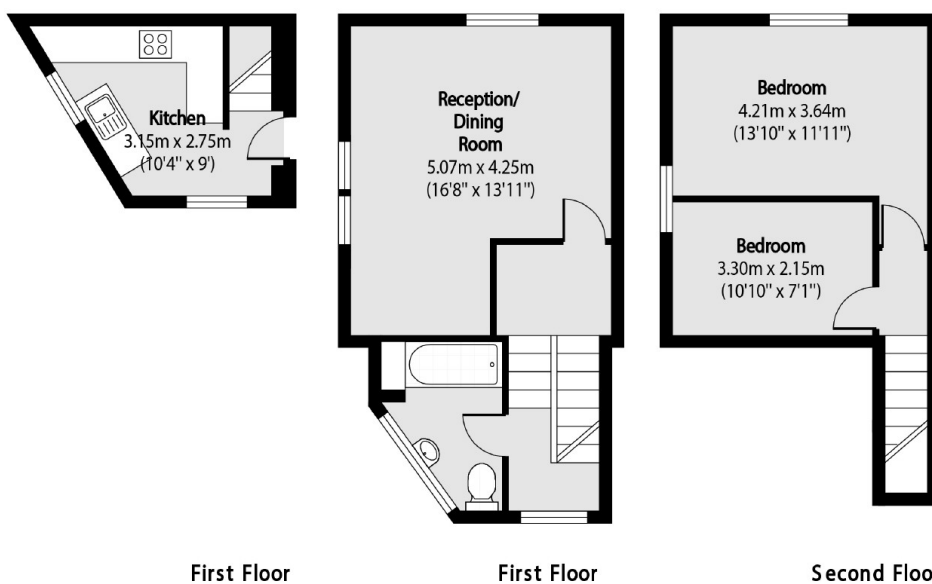
This unique split level, top floor flat offers a generous reception room flooded with natural lighting, two double bedrooms and a separate kitchen. There is direct access to a sun-filled south-east facing private garden and the flat has the potential to extend into the loft (STPP).

Upper Tollington Park is perfectly positioned close to Finsbury Park Station (Great Northern, Thameslink, Victoria and Piccadilly Lines) and the great selection of shops, bars, restaurants and cafés that the Finsbury Park and Stroud Green areas have to offer.

Features

- Two Bedrooms
- Private Garden
- Share of Freehold
- Split Level
- Separate Kitchen
- Excellent Location

Upper Tollington Park, London, N4



Total area (approx): 63.44 sq m (683 sq. ft)