



Shaftesbury Road, N19

£670,000

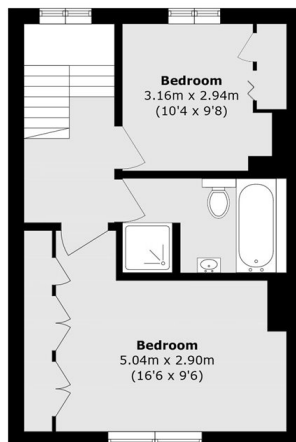
A well-presented two bedroom top floor flat set within a converted Victorian house. The property features a bright open plan kitchen/reception area, a separate conservatory space, a bathroom and a private garden.

This quiet residential street is in an ideal location for access to a range of shops and restaurants of the Broadway and Stroud Green Road. Local transport is available with connections to Archway and Finsbury Park.

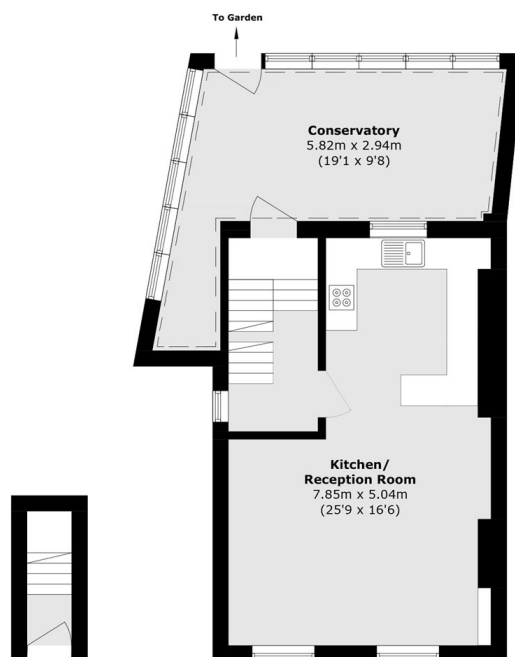
Features

- Two Bedroom
- Private Garden
- Split-Level
- Period Conversion
- Share of Freehold
- Open Plan Kitchen/Living

Shaftesbury Road, London, N19



First Floor



Raised Ground Floor

Ground Floor

Total area (approx.): 103.1 sq. m (1109.7 sq. ft)