



Tiltman Place, N7

£461 Per week

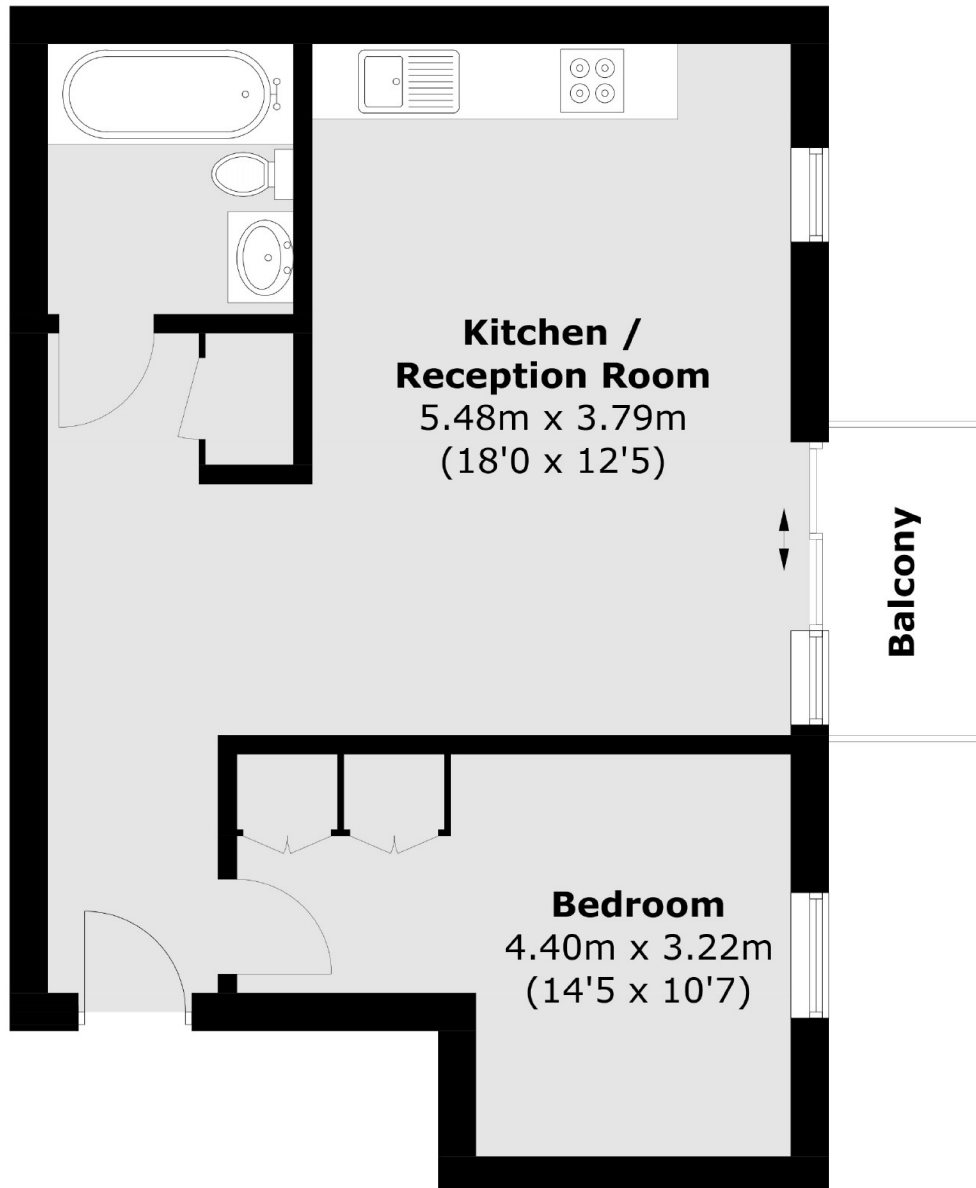
A bright and spacious one bedroom property in a private development. This apartment has an open plan living area with a private balcony and a big double bedroom.

Tiltman Place is ideally located for the many amenities of Holloway Road in addition to a variety of local transport links.

Features

- One Bedroom
- Open Plan
- Private Balcony
- Private Development
- 24 Hour Concierge
- Unfurnished

Tiltman Place,
London, N7



Total area (approx.) : 48.1 sq. m (517.7 sq. ft)
Balcony : 2.9 sq. m (31.2 sq. ft)

Dexters

Finsbury Park
87 Stroud Green Road
Finsbury Park
London
Lettings
020 7483 6361

Energy Rating: C. We aim to make our particulars both accurate and reliable. However they are not guaranteed; nor do they form part of an offer or contract. If you require clarification on any points then please contact us, especially if you're traveling some distance to view. Please note that appliances and heating systems have not been tested and therefore no warranties can be given as to their good working order.

 **RICS** | Regulated
Estate Agent
and Letting Agent

[dexters.co.uk](https://www.dexters.co.uk)