



Hewitt Road, N8

£1,000,000

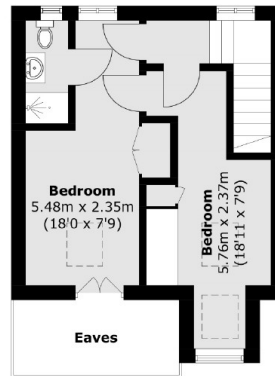
An impressive six bedroom, mid-terrace Victorian house offering 1,784 sq ft of living space. The property features a double reception room, large kitchen and a large garden with original period features throughout.

Hewitt Road is situated within the sought-after Harringey Ladder and is close to the vast array of amenities the local area has to offer. Turnpike Lane Underground Tube Station and Hornsey Station are nearby.

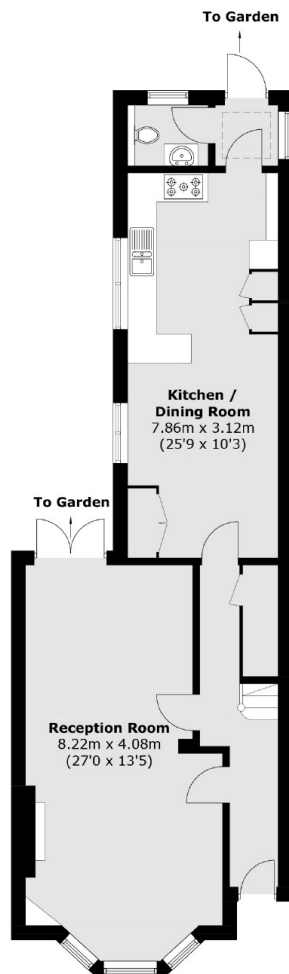
Features

- Chain Free
- Freehold House
- Six Bedrooms
- Original Features
- Great Transport Links
- Tree Lined Street

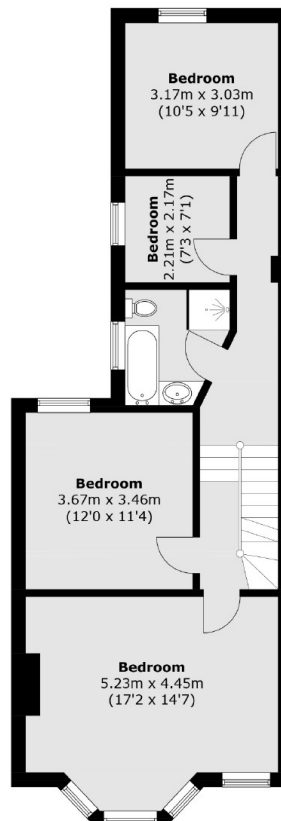
Hewitt Road, London, N8



Second Floor



Ground Floor



First Floor

Total area (approx.): 165.8 sq. m (1,784.6 sq. ft)
(Excluding Eaves)