



Mount Pleasant Crescent, N4

£425,000

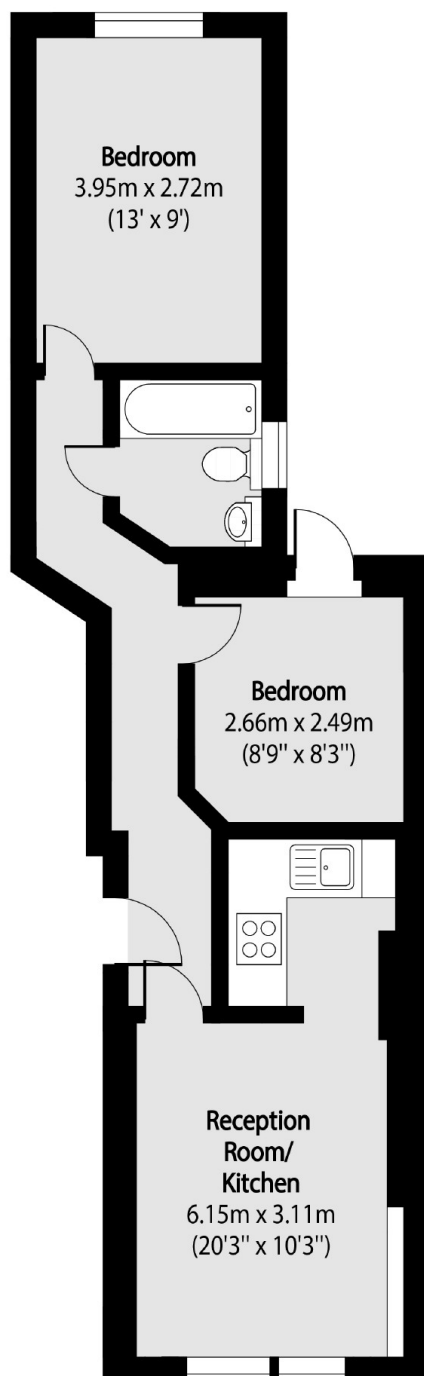
This two bedroom garden flat, located in the heart of Stroud Green, is presented in good decorative order and features an open-plan kitchen reception area and a private rear garden.

Mount Pleasant Crescent is a quiet residential street near Finsbury Park station, offering excellent transport links and easy access to the vibrant shops, bars, pubs, restaurants, and cafés of Finsbury Park and Stroud Green.

Features

- Two Bedrooms
- Share of Freehold
- Private Garden
- Open Plan Reception
- Excellent Location
- Good Transport Links

Mount Pleasant Crescent, London, N4



Total area (approx): 47.34 sq m (509 sq. ft)